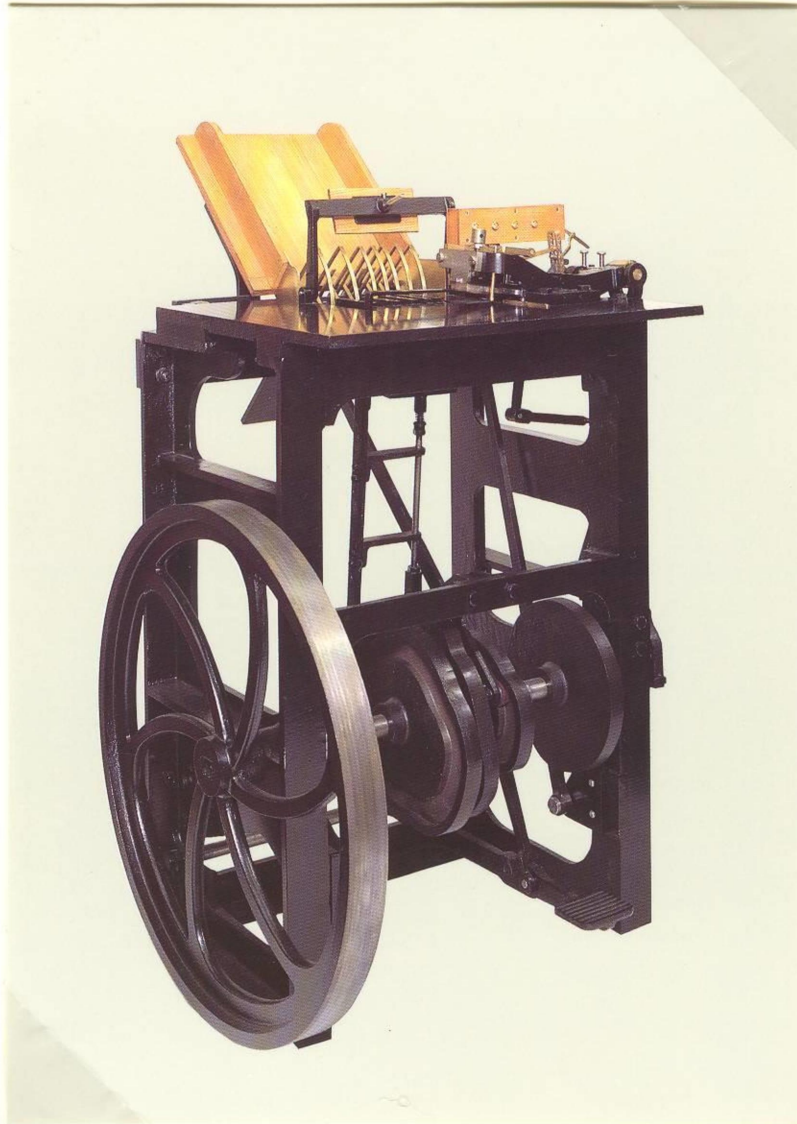


***'FROM HILL TO BICKERDIKE' ...***  
**THE VICTORIAN-ERA EXPERIMENTAL**  
**POSTMARKS OF ENGLAND .. 1857-1901**

by  
**JERRY H. MILLER**

**'FROM HILL TO BICKERDIKE' ...  
THE VICTORIAN-ERA EXPERIMENTAL MACHINE POSTMARKS  
OF ENGLAND 1857-1901**



**SEPTEMBER 1857**

**Illustration of the treadle-operated  
first (Machine 'A') 'Pearson Hill'  
Postmarking Machine, which could  
postmark about one hundred letters  
in a minute.**

**'FROM HILL TO BICKERDIKE'...  
THE VICTORIAN-ERA EXPERIMENTAL MACHINE  
POSTMARKS OF ENGLAND 1857-1901**



Postmark  
offset  
on reverse

Machine  
Type 'A'

"London"  
Dater-Dial  
Time-Code  
'A'

**'PEARSON HILL' MACHINE TYPE 'A' POSTMARK ...  
FIRST FULL DAY FIELD OPERATION**

(Dater Dial Time-Code 'A' = "Afternoon" or possibly "All Day" Duty)

**25 SEPTEMBER 1857**

Domestic single-weight (Penny Postage) commercial folded-letter,  
postmarked at London, sent to Glasgow, Scotland

*Only known example from first-day of full-day machine operation.*

**HISTORICAL BACKGROUND**

Soon after the introduction of prepaid postage & use of the first postage stamp in England in 1840, the postal authorities recognized a need for clear and legible postmarks as well as an improvement in the handling of the ever-increasing mail volume.

In 1853, Pearson Hill, son of Rowland Hill, became involved with those problems, developing and patenting the world's first rapid postmarking machine in 1857.

Between 1857-1901, the 'London General Post Office' tested or evaluated no less than thirteen machines, most of which were of non-British manufacture.

**EXHIBIT**

Postal history exhibit showing the chronological evolution of trial & early postmarks applied by the postmarking machines tested & evaluated by the 'London General Post Office' between 1857-1901 of Victorian-Era England.

POSTMARKING MACHINE	APPROXIMATE TRIAL OR EARLY-USE PERIOD
I. PEARSON HILL Machine 'A' Machine 'B' Machine 'C' Parallel Motion	Sept. 1857 – Feb. 1858 March – April, 1858 March 1858 March 1858
II. CHARLES RIDEOUT Trial One Trial Two	1858-1859 1866-1867
III. AZEMAR (Hinrichsen) Trial One Trial Two Trial Three	1869 1871 1872
IV. SLOPER	1870-1875
V. VAILLE	April 1878
VI. HALLER/HOSTER	1882-1884
VII. ETHRIDGE	Sept. 1886 – April 1887
VIII. MALIN	1890-1891
IX. HEY-DOLPHIN (International) Trial One	1893
X. IMPERIAL	1897
XI. EMPIRE	March 1898
XII. BOSTON	1898-1907
XIII. BICKERDIKE	1897-1907

**BIBLIOGRAPHY**

Gibbons, *Collect British Postmarks*, Eighth Edition, Chapter 10, Stanley Gibbons Ltd., London, England, 2011.

Miller, *From Hill to Bickerdike: The Experimental and Early Machine Postmarks of England 1857-1901*, The G.B.C.C. Chronicle, Quarterly Publication of the Great Britain Collectors Club, P.O. Box 68019, Cincinnati, Ohio 45206, U.S.A., Volume 26, Number 103, April, 2005, Pages 10-23.

Miller, *From Hill to Bickerdike: The Experimental and Early Machine Postmarks of England 1857-1901*, The GB Journal, Publication of the Great Britain Philatelic Society, 3 Cottesmore Avenue, Melton Mowbray, Leics LE13 OHY, England, Volume 43, Number 5, September/October, 2005, Pages 103-118.

Miller, *Von Hill bis Bickerdike: die Versuchs-und frühen Maschinenstempel Englands von 1857 bis 1901*, Rundbrief 145, Forschungsgemeinschaft Grossbritannien e.V., Jahrgang 35, Düsseldorf, Germany, September, 2006, Pages 113-12

Parmenter, Shine & Hine, *Early Experimental and Inland Branch Duplex Cancellations*, London Postal History Group, Carshalton, England, 2007.

# PEARSON HILL...

## Machine 'A'

21 September 1857 –  
17 February 1858

### POSTMARK TIME-OF-DAY CODES

Six different (five shown)  
**POSTMARK TIME-of-DAY CODES**  
were used in the trial involving Machine 'A':  
'A', 'M', '1', '2', '3', '4'..  
**REFLECTING THE TIME OF DAY.**



21 September 1857  
First Day Use



8 February 1858  
Late Date Use



Time Codes	'A'	'M'	'2'	'3'	'4'
Recorded Number of Days In Use:	26+	7	4	3	4



14 JANUARY 1858

So-called 'Lady's letter', postmarked at London,  
sent to Worcester (backstamp: 15 January).

**One Penny.. Domestic single-weight letter-rate**

Earliest known use of the 'M' Time Code.  
One of two known 'M' Time Code covers

PEARSON HILL...

Machine 'A'

21 September 1857 –  
17 February 1858

1857 & 1858 DOMESTIC LETTER-RATE USAGES  
Postmark Code 'A'



1 DECEMBER  
1857



19 JANUARY  
1858

One Penny ..  
Domestic single-weight letter-rate

**PEARSON HILL...**

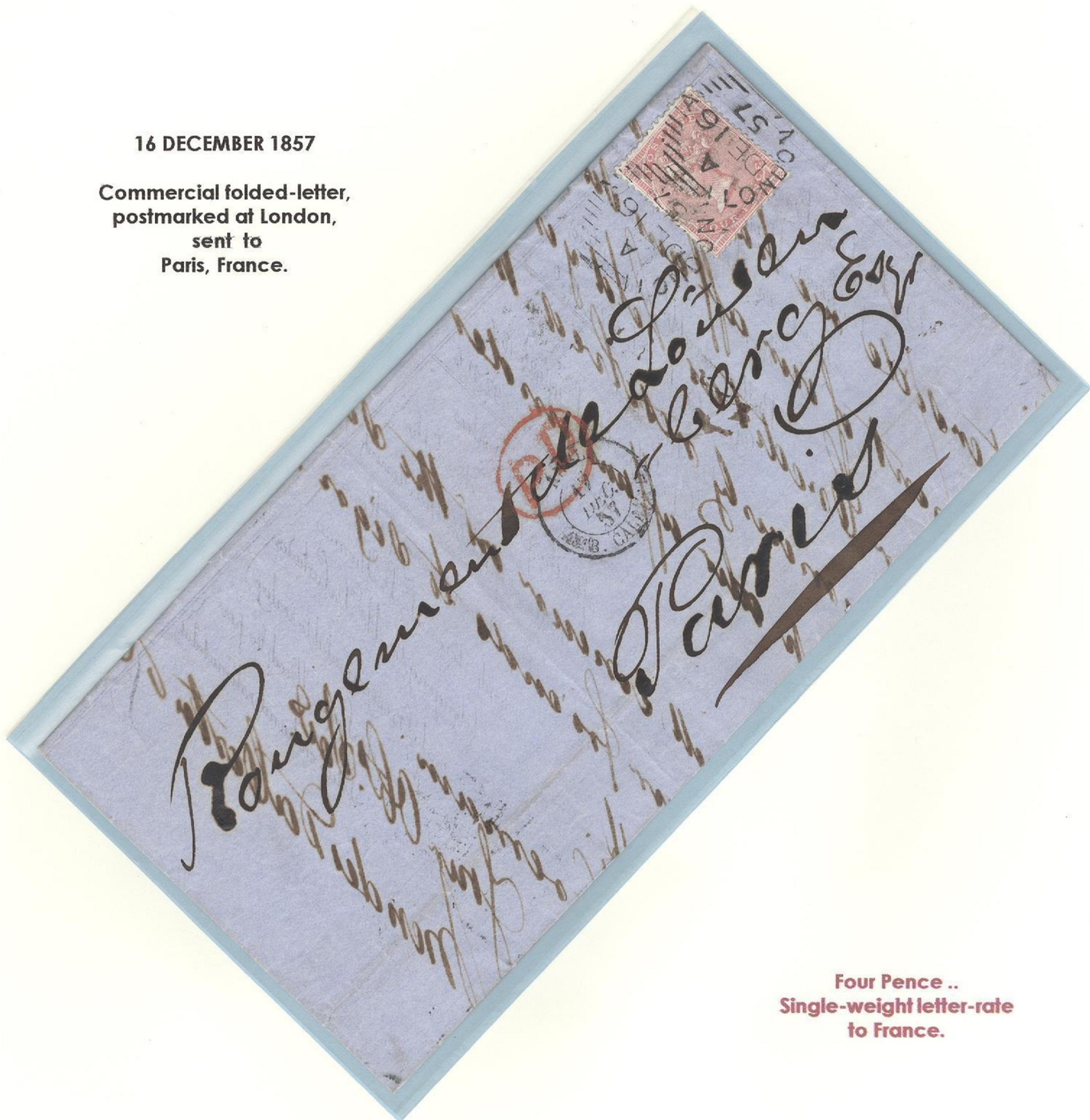
**Machine 'A'**

**21 September 1857 –  
17 February 1858**

**1857 FOREIGN DESTINATION COMMERCIAL MAIL  
Postmark Code 'A'**

**16 DECEMBER 1857**

**Commercial folded-letter,  
postmarked at London,  
sent to  
Paris, France.**



**Four Pence ..  
Single-weight letter-rate  
to France.**

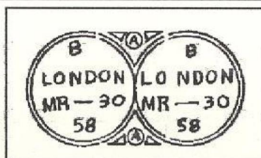
**Only known foreign-destination example**

# PEARSON HILL...

## Machine 'B'

21 March -  
23 April 1858

In March 1858, based on his heretofore 1857 patent, Pearson Hill introduced a modified version of his Machine 'A', now fitted  
**WITH A METAL POSTMARKING DIE, WHOSE POSTMARK IS REFERRED TO AS THE 'OPERA GLASS'.**



Postmark-  
offset on  
reverse

Origin  
postmark  
on front

24 MARCH 1858

Folded letter, postmarked at London,  
sent to Halifax.

**One Penny ..**  
**Domestic single-weight letter-rate**

**One of five examples known.**



# PEARSON HILL...

## Machine 'C'

8 – 18 March 1858

Having had limited success with his treadle-operated 'A' and 'B' Machines, Hill developed a new stationary mechanical hand-operated machine type, inexpensive and competitive to the Charles Rideout Machine introduced in February 1858.

Innovative with Hill's new machine version was placing an inked linen ribbon between the metal die and the mail in an effort to reduce ink usage and eliminate any postmark offset on the reverse side of mail. It also eliminated the need for so-called "glue and treacle inking rollers" found on Machine Types 'A' & 'B'.

**HILL'S MACHINE 'C' IS CONSIDERED TO BE A FORERUNNER TO HIS LATER 'PARALLEL MOTION' MACHINE FROM WHICH THE LATTER EVOLVED.**



11 MARCH 1858

Folded letter, postmarked at London,  
sent to Plymouth.

**One Penny ..**  
**Domestic single-weight letter-rate.**

**One of four cover examples known.**

## COMMENCEMENT OF DATER DIAL DAY-CODING

Commencing with 'Machine C',  
**POSTMARKS OF THE EARLY 'PEARSON HILL MACHINES' HENCEFORTH INDICATED A 'MACHINE CODE' BUT ALSO A 'DAY' CODE, whose sequence was a series of 'three days' which repeated itself.**

The code sequence for 'Machine C' was:

CA = Monday	8 March
CB = Tuesday	9 March
CC = Wednesday	10 March
CA = Thursday	11 March
CB = Friday	12 March
CC = Saturday	13 March ...



14 MARCH 1858

## POSTMARK FORGERY

**Forgeries of the early Pearson Hill Machine Postmarks are basically unknown, except for the above forgery.**

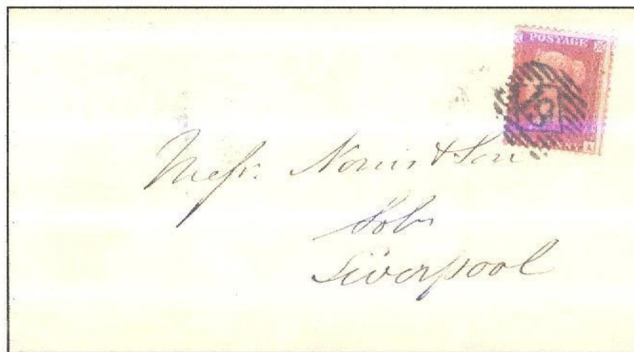
- \* Postmark date of "14 March 1858" was a Sunday when no mail was processed. Had mail, however, been processed, the dater dial-code would have been "CA"!
- \* 'Small letters in squares' are found in the postage stamp corners. Stamps of that design were first issued in 1864 and not in 1858, the year date on the postmark!

**Only Known Pearson Hill Postmark Forgery Example.**

APPLICATION OF 'TRANSIT' OR 'ARRIVAL' MARKS  
USING THE HERETOFORE DOUBLE-DIAL POSTMARK

By March 1858, the London General Post Office adopted the duplex-style of postmark for experimentation and, thus, had the double-circle dial of the 'Machine C' separated.

**ONE DATER-DIAL WAS USED TO TEST THE FEASIBILITY FOR USE AS A 'TRANSIT' AS WELL AS AN 'ARRIVAL' POSTMARK FOR IN-COMING MAIL,** while the other dater-dial became part of a duplex postmark as an origin postmark for out-going mail tested on 23 March 1858.



Cover Front



20 MARCH 1858

Domestic single-weight letter sent un-dated at London to Liverpool, with a dated 'London' 'transit' postmark on reverse.

**Earliest recorded usage.**  
**One of two known cover examples.**

DEVELOPMENT OF A 'DUPLEX' MARK  
USING THE HERETOFORE DOUBLE-DIAL POSTMARK

FIRST TRIAL  
Duplex Postmark Type I

By March 1858, the General Post Office at London adopted the duplex-style of postmark for experimentation and had the double-circle dial of the 'Machine C' separated.

**ONE DATER-DIAL WAS USED IN THE DEVELOPMENT OF A DUPLEX POSTMARK WITH TESTING ON OUT-GOING FOREIGN-BOUND MAIL,**  
while the other dater-dial was tested as a 'transit' or 'arrival' mark on in-bound mail.



19mm Dater-Dial with  
'London' 14mm in length along  
with a duplex obliterator having '3'  
between 21 (5.11.5.11) thin lines.

Postmark Code 'C' & Day Code 'B'



23 MARCH 1858

Commercial folded-letter sent from London  
to  
Hamburg, Germany.

**Eight Pence..**  
**Single-weight letter-rate to Germany**

Only known example.

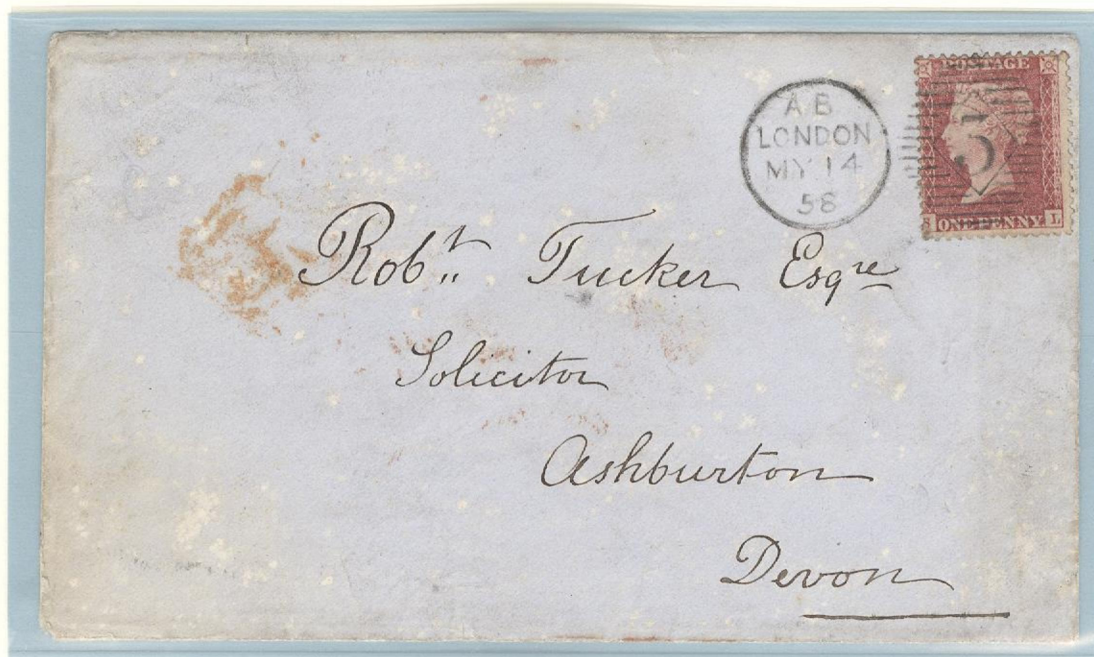
SECOND TRIAL  
Duplex Postmark Type II

Officially first demonstrated on 13-14 May 1858,  
**HILL'S SO-CALLED 'PARALLEL-MOTION STAMPING MACHINE' WAS A  
MODIFIED, MORE ROBUSTLY CONSTRUCTED, 'MACHINE 'C' TYPE  
having a parallel-motion linkage and having a double-roller  
inking feature to eliminate offset inking on mail.**



19mm Dater-Dial with 'London'  
14mm in length along with a  
duplex obliterator 2.5mm from dial  
with '3' in obliterator between  
19 (4.11.11.4) thin lines.

Postmark Code 'A' & Day Code 'B'



14 MAY 1858

Domestic commercial cover sent from  
London to Ashburton.

One Penny..  
Domestic single-weight letter-rate

Only known example from this trial.

# PEARSON HILL...

## Parallel Motion Machine

15 May -  
December 1858

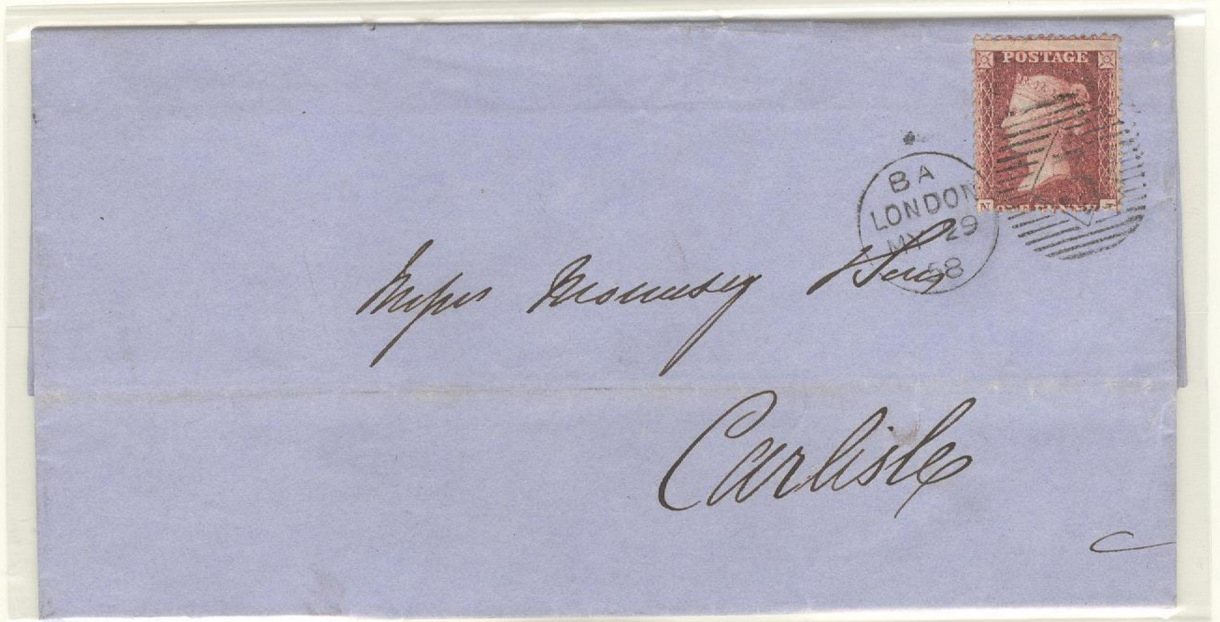
### THIRD TRIAL Duplex Postmark Type III

One day after the second trial (13-14 May),  
**THE DATER-CODE & OBLITERATOR WERE MODIFIED WITH  
A NEW 'METAL' DATER-DIAL DIE.**



19mm Dater-Dial with  
'London' 14mm in length along  
with a duplex obliterator having '3'  
between 17 (3.11.11.3) thin lines.

Postmark Code 'B' & Day Code 'A'



29 MAY 1858

Domestic One Penny single-weight folded-letter from London to Carlisle.



5 JULY 1858

Domestic Two Pence double-weight commercial cover sent from London to Kells, Ireland.

Parallel Motion Machine

21 January –  
25 March 1859

FOURTH TRIAL  
Duplex Postmark Type IV

Seven months after commencement of use of the  
*'Trial Three'* duplex version.  
**AN UN-EXPLAINABLE SHORT-LIVED (two months) MODIFIED "AB"  
POSTMARK/DATE CODE WAS USED**



19mm Dater-Dial with  
'London' 14mm in length along  
with a duplex obliterator having '3'  
between 17 (3.11.11.3) thin lines.

Postmark Code 'B' & Day Code 'A'



14 FEBRUARY 1859

Commercial bank folded-letter sent from London  
To Nelson, New Zealand. 107-day transit time.

Transit & Arrival Postmarks:  
"Wellington, 23 May 1859"  
"Nelson, 1 June 1859"

**Eight Pence..**  
**Single-weight letter-rate to New Zealand.**

**Only known overseas usage for this postmark.**

# PEARSON HILL...

## Parallel Motion Machine

1858 - 1859

### 'ARRIVAL' & 'TRANSIT' POSTMARK TRIALS Postmark Types III & IV

By removing the duplex-obliterator, the **HERETOFORE ORIGIN POSTMARKS TYPES III & IV** applied to out-going mail **WERE CONVERTED TO 'ARRIVAL' or 'TRANSIT' POSTMARKS** applied to in-coming mail to London.

Usage in 1858 is found only in black-ink ink while usage in 1859 has been only been found in orange-red ink.

19mm Dater-Dial with  
'London' 14mm in length along  
with month, day & year.

Postmark:

Postmark Codes 'A' or 'B'

Day Codes: 'A', 'B' or 'C'



13 AUGUST 1858

*"Insufficiently Pre-Paid"* (cover front) cachet hand-stamp (4 Pence postage instead of the required twelve Pence) with transit postmark (black ink) on folded-letter from Liverpool, England, to Paris, France.



14 FEBRUARY 1859

Arrival mark (Orange-red ink) on a letter from Lymington to London.



# 1859 LONDON '683' PIN-POSTMARK TRIAL...

3 -19 January 1859

## 'SALISBURY' PIN-OBLITERATOR POSTMARKING DEVICE

Concurrent with the trials of the Pearson Hill Postmarking Machines at London, the British post Office evaluated a postmarking device designed at Salisbury (England) and trialed at London in January 1859.

SINCE THE POSTMARK HAVING FOUR CENTRALLY-POSITIONED PINS OFTEN PENETRATED THE MAIL AND ITS CONTENTS, THE POST OFFICE FOUND THE DEVICE UNACCEPTABLE.

In March 1871, the postmarking device was re-trialed but at Salisbury, albeit with the pins removed from the postmark, without success.



*Postmark:* 17mm diameter round oblierator postmark indicating '683' and having four centrally-positioned pins.



One of five examples known

# PEARSON HILL...

## Parallel Motion Machine

25 March -  
20 May 1859

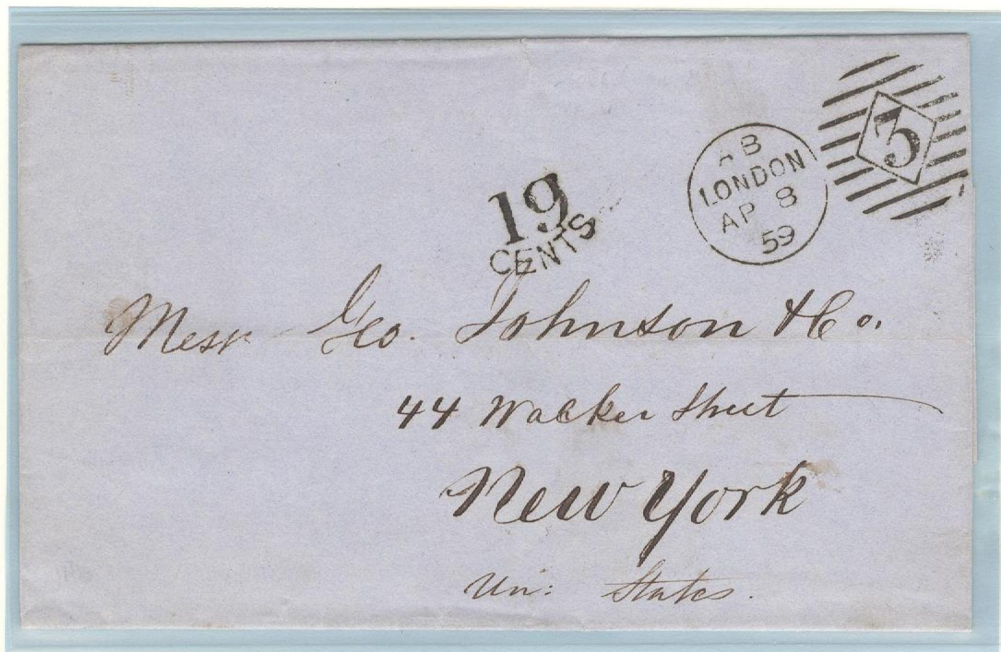
### FIFTH TRIAL Duplex Postmark Type V

Between 1858-1860, the London General Post Office  
EXPERIMENTED WITH DIFFERENT POSTMARK OBLITERATOR VERSIONS  
SEEKING CLARITY & EFFECTIVENESS.



19mm Dater-Dial with  
'London' 14.5mm in length along  
with a wide duplex obliterator having '3'  
between 2 (2.5.5.2) heavy lines.

Postmark Code 'A' & Day Code 'B'



8 APRIL 1859

"19 Cents" Collect (Postage Due) stampless commercial folded-letter from London to New York City.  
'19 Cents' Postage Due Mark = 3 Cents 'British Inland Rate' + 16 Cents 'British Packet' Rate  
via Exchange Office.



19 MAY 1859

Domestic One Penny single-weight letter from London to Ecclefechan with "L.C.R." Railway Marking.

PEARSON HILL...

Parallel Motion Machine

12 May –  
19 December 1859

SIXTH TRIAL  
Duplex Postmark Type VI

Since the word 'LONDON' needed to be larger in the dater dial, such was **INCREASED IN LENGTH TO 16mm** with the postmark obliterator remaining the same as Type V.



19mm Dater-Dial with 'London' now **16mm** in length along with a duplex obliterator having '3' between 9 (2.5.5.2) widely spaced lines.

Postmark Code 'A' & Day Code 'B'  
(From Sept.-Dec. Day Codes: 'A' to 'Z')



16 MAY 1859

Commercial mail sent from London to the "Royal Institute of Saxony"  
at Dresden, Germany, with railway routing mark (red)..

*"From England by way of  
Aachen Prepaid"*

Two-day transit time.

Delivery Postmark:  
(Reverse)

"Brief P. – Ausgabe, 2-1/2, 18 May"

**Eight Pence ...**  
**Single-weight letter-rate to Germany**

PEARSON HILL...

Parallel Motion Machine

12 May –  
19 December 1859

SIXTH TRIAL  
Duplex Postmark Type VI

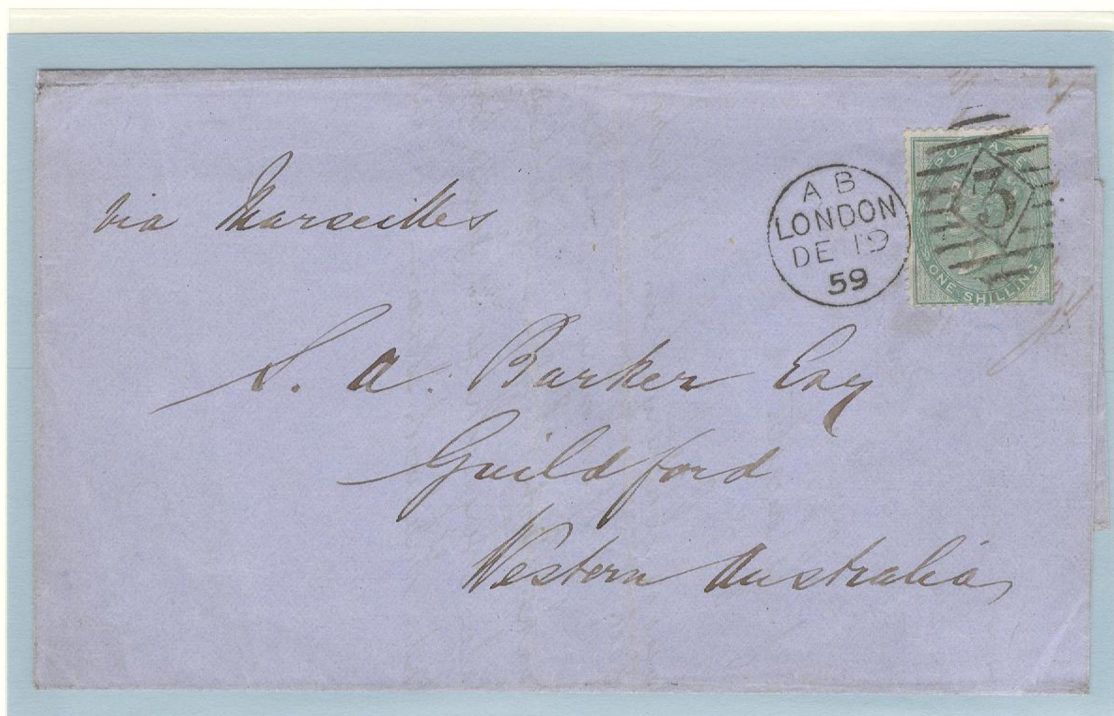


10 AUGUST 1859

Three-color-franked commercial folded printed-circular mail from London to Shanghai, China, with routing "Overland Via Marseilles" (France).

Transit Postmark: (Reverse)  
"Hong Kong, September 20, 1859"

9 Pence .. Single-weight rate to China.



19 DECEMBER 1859

Commercial folded-letter sent from London to Guildford, Western Australia, "Via Marseilles" (France).

One Shilling ... Single-weight letter-rate from England to Australia.

Latest known date.

'ARRIVAL' & 'TRANSIT' POSTMARK TRIALS  
Postmark Types VI

By removing the duplex-obliterator, the **HERETOFORE ORIGIN POSTMARK TYPE VI** applied to out-going mail **WAS CONVERTED TO AN 'ARRIVAL' or 'TRANSIT' POSTMARK** and applied to in-coming & transit mail at London.  
  
Orange-red ink color

Postmarks:

1859: 19mm Dater-Dial with 'London' 16mm in length along with month, day & year.

Postmark Code 'A'  
Day Code: 'B' ('A' to 'Z')  
(25 March – 20 May 1859)

1861: 19mm Dater-Dial with 'London' 15mm in length along with month, day & year.

Postmark Code 'B'  
Day Code: 'E' ('A' to 'Z')  
(9 November 1860 – 23 June 1863)

ARRIVAL POSTMARK

17 MAY 1859

Lady's letter, postmarked at Lymington, sent to London.

One Penny.. Domestic single-weight letter-rate



TRANSIT POSTMARK

22 MARCH 1861

Mourning cover, postmarked at Weston-Super-Mare (near Bristol), England, sent to Boone County, Illinois, U.S.A.

Auxiliary Mark: (Front)  
"Br. Packet April 24"

24 Cents Collect.. (3+16+5 Cents) from recipient in America

Front



# PEARSON HILL...

## Parallel Motion Machine

17 February -  
25 October 1860

TRIAL WITH A SECOND MACHINE  
OBLITERATOR DESIGNATION '4'  
Duplex Postmark Type 4-V

After a short-lived early February trial,  
**THE POST OFFICE REVERTED TO USE OF THEIR FIRST POSTMARK**  
(Type 4-II) **WITH THE SECOND HILL PARALLEL MOTION MACHINE**  
**NOW WITH HEAVY OBLITERATOR BARS.**



19mm Dater-Dial with 'London' now  
17mm in length along with a duplex  
obliterator having '4' between  
11 (3.5.5.3) heavy bar lines.

Postmark Code 'B' & Day Codes 'A' thru 'Z', less 'Q'

10 MARCH 1860

Commercial  
folded letter  
from London  
to Glasgow,  
Scotland.



18 SEPTEMBER 1860

Commercial  
folded letter  
from London  
to Liverpool.



One Penny ... Domestic single-weight letter-rate.

# PEARSON HILL...

## Parallel Motion Machine

24 September 1859 -  
8 February 1860

TRIAL WITH A SECOND MACHINE  
OBLITERATOR DESIGNATION '4'  
Duplex Postmark Type 4-II

In September 1859, in order to conduct additional tests,  
THE GENERAL POST OFFICE OBTAINED A SECOND PEARSON HILL  
MACHINE HAVING OBLITERATOR DESIGNATION '4'  
(HERETOFORE '3').



19mm Dater-Dial with 'London' now  
17mm in length along with a duplex  
obliterator having '4' between  
11 (3.5.5.3) bar lines.

Postmark Code 'B' & Day Codes 'A' thru 'Z', less 'Q'

29 OCTOBER  
1859

Commercial  
folded letter  
from London to  
Paris, France.

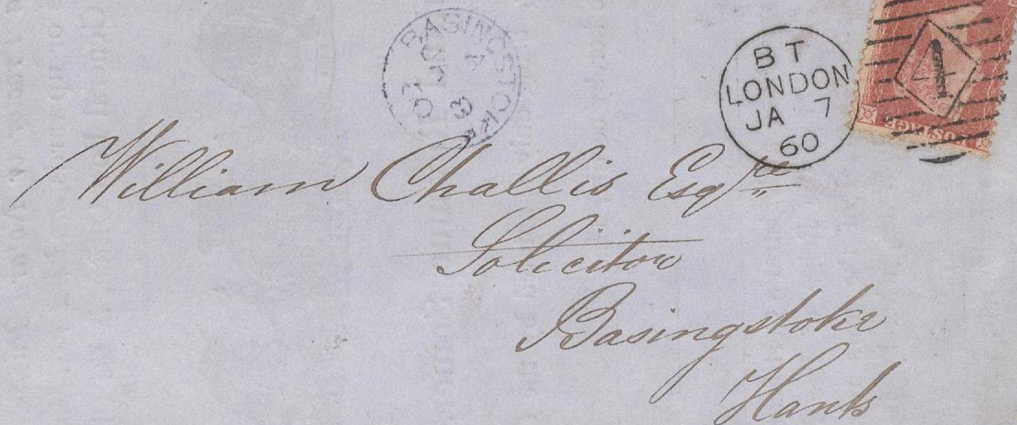
One shilling..  
Double-weight  
letter-rate to  
France



7 JANUARY  
1860

Commercial  
folded-letter  
from London  
to  
Basingstoke.

One Penny..  
Domestic  
single-  
weight  
letter-rate.



PEARSON HILL...

Parallel Motion Machine

6 – 8 February 1860

TRIAL WITH A SECOND MACHINE ..  
OBLITERATOR DESIGNATION '4'  
Duplex Postmark Type 4-IV

One of the shortest trial runs with the Second Hill Trial-Machine ...  
POSTMARK HAVING 'SIX' BARS (unique) ON EACH SIDE OF THE  
TRIANGLE WITH '4' DESIGNATION.



19mm Dater-Dial with 'London' now  
17mm in length along with a duplex  
obliterator having '4' between  
10 (2.6.6.2) heavy bar lines.

Postmark Code 'B' Day Codes 'A' thru 'Z' less 'Q'



Two of three examples known.



# PEARSON HILL...

## Parallel Motion Machine

17 February -  
25 October 1860

TRIAL WITH A SECOND MACHINE  
OBLITERATOR DESIGNATION '4'  
Duplex Postmark Type 4-V

After a short-lived early February trial,  
**THE POST OFFICE REVERTED TO USE OF THEIR FIRST POSTMARK**  
(Type 4-II) **WITH THE SECOND HILL PARALLEL MOTION MACHINE**  
**NOW WITH HEAVY OBLITERATOR BARS.**



19mm Dater-Dial with 'London' now  
17mm in length along with a duplex  
obliterator having '4' between  
11 (3.5.5.3) heavy bar lines.

Postmark Code 'B' & Day Codes 'A' thru 'Z', less 'Q'

10 MARCH 1860

Commercial  
folded letter  
from London  
to Glasgow,  
Scotland.



18 SEPTEMBER 1860

Commercial  
folded letter  
from London  
to Liverpool.



One Penny ... Domestic single-weight letter-rate.

# PEARSON HILL...

## Parallel Motion Machine

Mid - End 1860

### 'FIRST' MULTIPLE UNIT TRIALS AT LONDON SERIES '1'

Duplex Postmark Types "87PH1" - "93PH1"

The General Post Office in 1860 found that Hill's machine was superior to one submitted by "Charles Rideout", a machine which was tried concurrently at the time, **PRIOR TO ADOPTING THE 'PEARSON HILL' MACHINES FOR GENERAL USE WHERE TWENTY MACHINES WERE TRIED IN MULTIPLE TRIAL USAGE AT THE LONDON POST OFFICE.**

(Feb., 1860, Parkhurst, Chief Clerk).

The first six machines **TRIED BETWEEN 'MID-END 1860' HAD DIE CODES..**  
87 = C, 88 = D, 89 = E, 90 = F, 92 = G, 93 = H.



19mm Dater-Dial with 'London'  
16mm in length along with a duplex  
obliterator having '87' to '93' between  
2 (2.5.5.2) heavy bar lines.

Postmark Code 'C' to 'H' & Day Codes 'A' thru 'Z'

4 AUGUST 1860

Commercial  
folded- letter  
from London to  
Kendal.

Obliterator Code: '87'  
(4 Aug. - 27 Oct. 1860)  
Postmark Code 'C'  
Day Code 'Y'

One Penny ..  
Domestic  
single-weight  
letter-rate

Earliest known usage.



25 AUGUST 1860

Commercial  
folded-letter  
from London  
to Perth.

Obliterator Code: '89'  
(23 June - 29 Sept. 1860)  
Postmark Code 'E'  
Day Code 'R'

Two Pence ..  
Domestic  
double-weight  
letter-rate



# PEARSON HILL...

## Parallel Motion Machine

October 1860 - 1863

'SECOND' MULTIPLE UNIT TRIALS AT LONDON  
SERIES '2'  
Duplex Postmark Types "1PH2" - "6PH2"

The first 'six' machines of the 'Second' Trial Series had the following  
DIE CODES.. 1 = A, 2 = B, 3 = C, 4 = D, 5 = E, 6 = F.

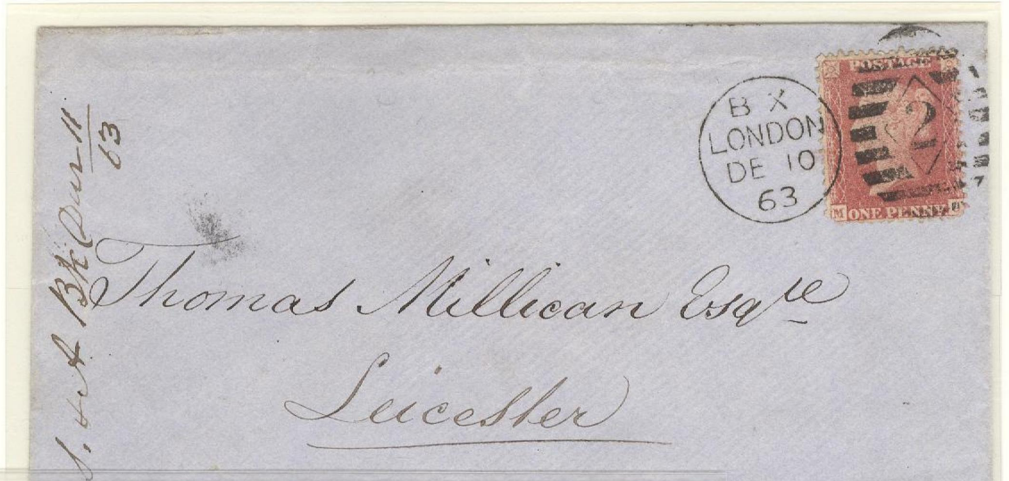


19mm Dater-Dial with 'London'  
16mm in length along with a duplex  
obliterator having '1' to '6' between  
2 (2.5.5.2) heavy bar lines.  
Postmark Code 'A' to 'F' & Day Codes 'A' thru 'Z'

10 DECEMBER 1863

Obliterator Code: '2'  
(9 Nov.1860 - 10 Dec.  
1863)  
Postmark Code 'B'  
Day Code 'X'

Latest known usage.



22 OCTOBER 1862

Obliterator Code: '4'  
(29 Oct. 1860 -  
26 June 1863)  
Postmark Code 'D'  
Day Code 'R'

18 MARCH 1862

Obliterator Code: '6'  
(25 Oct. 1860 -  
25 June 1863)  
Postmark Code 'F'  
Day Code 'E'



# PEARSON HILL...

## Parallel Motion Machine

October 1860 - 1863

'SECOND' MULTIPLE UNIT TRIALS AT LONDON  
SERIES '2'  
Duplex Postmark Types "1PH2" – "6PH2"

Examples of **MISSING 'DAY' CODES**  
have been recorded.  
The postmark **DATER DIAL**, with obliterator removed, were also  
**USED AS 'ARRIVAL MARKS'** on the reverse of incoming mail.



19mm Dater-Dial with 'London'  
16mm in length along with a duplex  
obliterator having '5' between  
9 (2.5.5.2) heavy bar lines.

Postmark Code 'E' & Day Code 'A' thru 'Z' or 'Missing'

### MOURNING COVERS

#### MISSING 'DAY' CODE

29 NOVEMBER 1863

Obliterator Code: '5'  
(29 Oct. 1860 –  
13 July 1863)

Postmark Code 'F'



#### ARRIVAL POSTMARK

2 AUGUST 1861

From Obliterator '5'  
Postmark Code 'F'  
Day Code 'J'

# PEARSON HILL...

## Parallel Motion Machine

January 1862 - June 1864

### 'THIRD' MULTIPLE UNIT TRIALS AT LONDON SERIES '3'

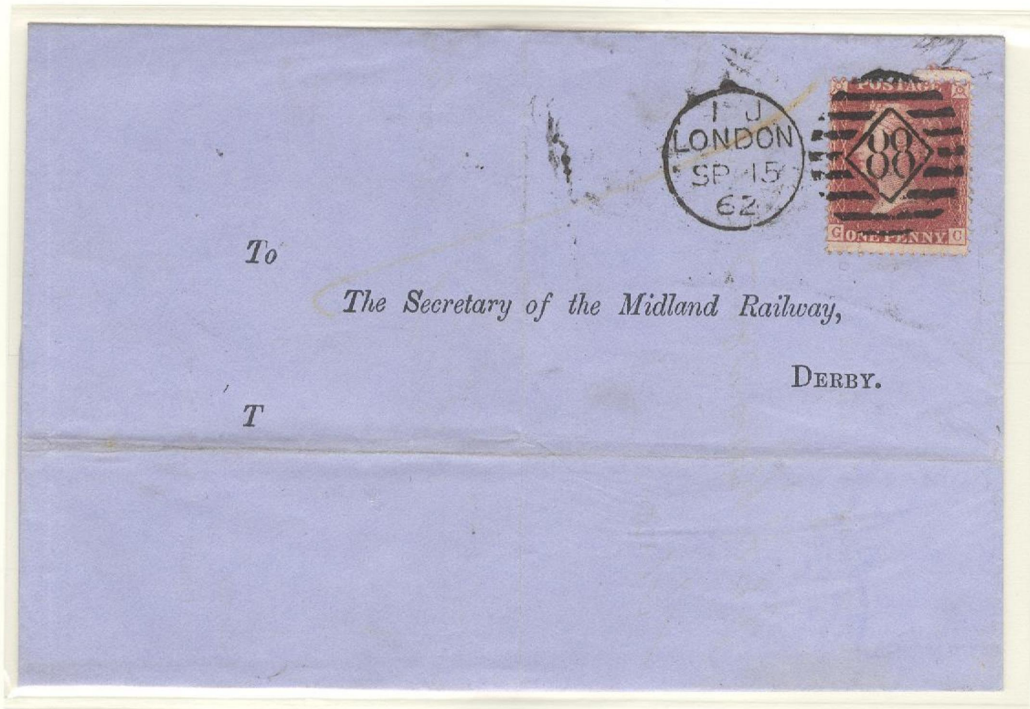
Duplex Postmark Types "7PH3", '50PH3' &  
'87,88,89,90,92,93,94,95,97,100,101PH3'

Machines of the 'Third' Trial Series had the following  
DIE CODES.. 7 = G, 50 = S, 87 = H, 88 = I, 89 = J, 90 = K,  
92 = L, 93 = M, 94 = N, 95 = O, 97 = P, 100 = R, 101 = S



19mm Dater-Dial with 'London'  
16mm in length along with a duplex  
obliterator having the aforementioned  
numbers between 2 (2.5.5.2) heavy bar lines.

Postmark Code 'As Indicated Above'  
& Day Codes 'A' thru 'Z'



15 SEPTEMBER 1862

Commercial folded reply letter to the  
"Midland Railway" at Derby.

Obliterator Code: '88'  
(7 Febr.1862 - 25 June1864)

Postmark Code 'I'  
Day Code 'J'

One Penny ..  
Domestic single-weight letter-rate

# CHARLES RIDEOUT MACHINE...

FIRST TRIAL

MACHINE '1'  
Duplex Postmark Type I  
4 February - 14 October 1858

In January 1858, Charles Rideout, a former surveyor, offered the London Post Office a new postmarking machine, which in October 1857 had been patented by Rideout's son-in-law, George Beard, **TWO 'RIDEOUT' MACHINES WERE TESTED BY THE GENERAL POST OFFICE BETWEEN 1858-1859 DURING CONCURRENT TRIALS WITH PEARSON HILL'S MACHINES.**



19mm Dater-Dial with 'HS' Code, month, day & year along with a duplex obliterator having '1' between 12 (2.8.7.2) vertical bar lines.

MAIL TO CORFU,  
IONIAN ISLANDS  
(GREECE)

15 MAY 1858

"Lady's letter" sent  
from London to Corfu  
with routing ..  
London/Aachen/Triest  
to Corfu arriving on  
24 May 1858.  
10-day transit time.

Between 1815-1864,  
Corfu was under British  
Administration.

1 Shilling..  
Single-weight  
letter-rate 'all paid'  
to Corfu



MAIL TO GIBRALTAR

16 AUGUST 1858

Mourning cover from  
London to  
"Reverend Crozies" on  
Gibraltar, arriving on  
25 August 1858  
(green-ink 'arrival postmark').  
9-day transit time.

Six Pence ...  
Single-weight letter-rate  
to Gibraltar.



# CHARLES RIDEOUT MACHINE...

FIRST TRIAL

MACHINE '1'  
Duplex Postmark Type I  
4 February - 14 October 1858



19mm Dater-Dial with 'HS' Code, month, day & year along with a duplex obliterator having '1' between 12 (2.8.7.2) vertical bar lines.

AMERICAN-ORIGIN 'REDIRECTED' MAIL IN ENGLAND ..  
'DOUBLE-FRANKING'



Ex Chase & Ward

12 MAY 1858

Cover, postmarked at Charlottesville, Virginia, U.S.A., sent to London, where 'Rideout Postmark' was applied, British postage added and 'redirected' to Chester.

24 Cents .. Single-weight letter-rate to England.

+

One Penny.. Domestic single-weight letter-rate postage in England for redirected mail.

# CHARLES RIDEOUT MACHINE...

FIRST TRIAL

MACHINE '1'  
Duplex Postmark Type II

22 October 1858 – December 1859

THE 'TYPE I' RIDEOUT POSTMARK WAS REPLACED IN LATE OCTOBER 1858 WITH ONE HAVING '11' VERTICAL BAR LINES.



19mm Dater-Dial with 'HS' Code, month, day & year along with a duplex obliterator having '1' between 11 (2.7.7.2) vertical bar lines.

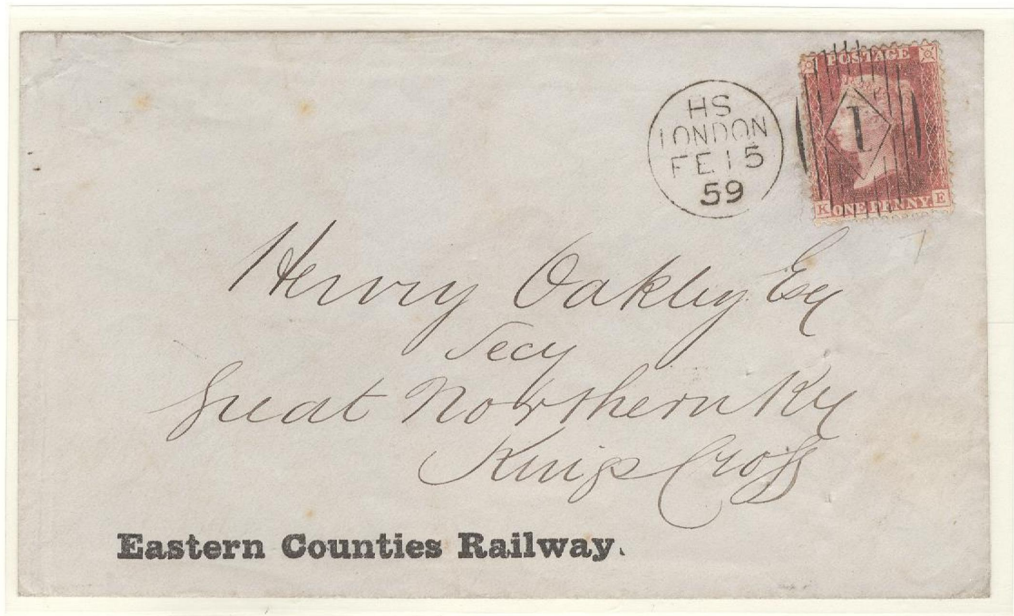
## RAILWAY TO RAILWAY MAIL

15 FEBRUARY 1859

"Eastern Counties Railway"

Cover, sent inner-London to Kings Cross Station & the "Great Northern Railway"

One Penny.. Domestic single-weight letter-rate.



COMMERCIAL DOUBLE-WEIGHT MAIL

2 MAY 1859

Commercial folded-letter mail sent from London to Macclesfield.

Two Pence ... Domestic double-weight letter-rate.



MACHINE '1'  
Duplex Postmark Type II

22 October 1858 – December 1859



19mm Dater-Dial with 'HS' Code, month, day & year along with a duplex obliterator having '1' between 11 (2.7.7.2) vertical bar lines.

MAIL FROM ENGLAND  
& REDIRECTED WITHIN INDIA



Reverse

3 MARCH 1859

'Lady's cover' sent from London to "Captain Griffeths" of "Her Majesty's 19<sup>th</sup> Regiment" in India with routing "Via Marseilles", France.

Multiple transit and redirection markings (reverse) with final delivery on 13 April 1859. 40-day transit time.

**Nine Pence..**  
**Single-weight letter-rate to India.**

MACHINE '1'  
'ARRIVAL' & 'TRANSIT' POSTMARKS  
1858 - 1859

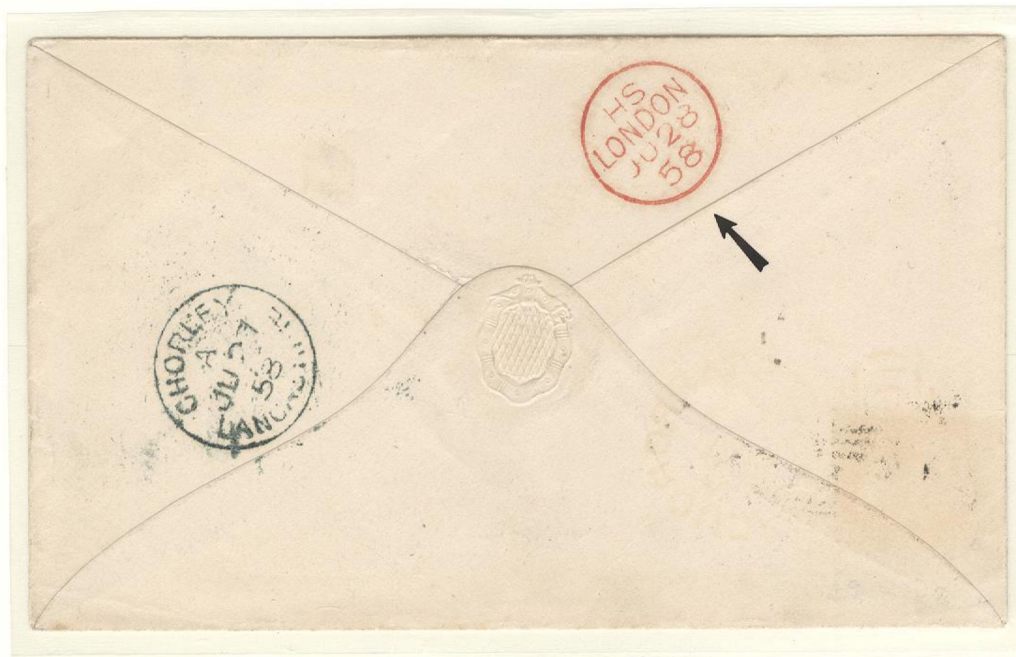
By removing the duplex-obliterator,  
THE HERETOFORE ORIGIN POSTMARK TYPES I or II  
applied to out-going mail  
WERE CONVERTED TO AN 'ARRIVAL' or 'TRANSIT' POSTMARK  
applied to in-coming mail at London.

Only known in orange-red ink.

19mm Dater-Dial with 'HS' Code,  
month, day & year



20 DECEMBER 1858



28 JUNE 1858

# CHARLES RIDEOUT MACHINE...

FIRST TRIAL

MACHINE '2'  
Duplex Postmark Type I  
27 December 1858 – 3 December 1859

In December 1858, Charles Rideout, delivered a **SECOND TRIAL MACHINE** to the General Post Office at London; **POSTMARK NOW HAD A NEW DATER-DIAL CODE OF 'CR' & AN OBLITERATOR INDICATING '2'.**



19mm Dater-Dial with 'CR' Code, month, day & year along with a duplex obliterator having '2' between 2 (2.5.5.2) vertical bar lines.

18 JUNE 1859

Mourning cover sent inner-London to the "Secretary of the Great Northern Railway" at Kings Cross Station.



26 FEBRUARY 1859

Commercial folded letter from London to Hull.

One Penny..  
Domestic single-weight letter-rate.

# CHARLES RIDEOUT MACHINE...

FIRST TRIAL

MACHINE '2'  
Duplex Postmark Type II  
8 February – 5 June 1859

Between February and June 1859,  
THE HERETOFORE USED POSTMARK HAVING CODE 'CR' HAD ITS CODE  
TYPE REVERSED TO INDICATE 'RC'.



19mm Dater-Dial with 'RC' Code,  
month, day & year along with a  
duplex obliterator having '2' between  
2 (2.5.5.2) vertical bar lines.



4 JUNE 1859

Commercial folded letter from London  
to Edinburgh, Scotland, arriving there  
by train mail on 5 June 1859 (backstamp).

**Two Pence..**  
(horizontal pair of One Pence reds)  
**Domestic double-weight letter-rate.**

**Latest known usage.**  
(5 June was a Sunday with no mail delivery service)

# CHARLES RIDEOUT MACHINE...

FIRST TRIAL

## MACHINE '2' 'ARRIVAL' & 'TRANSIT' POSTMARKS 1859

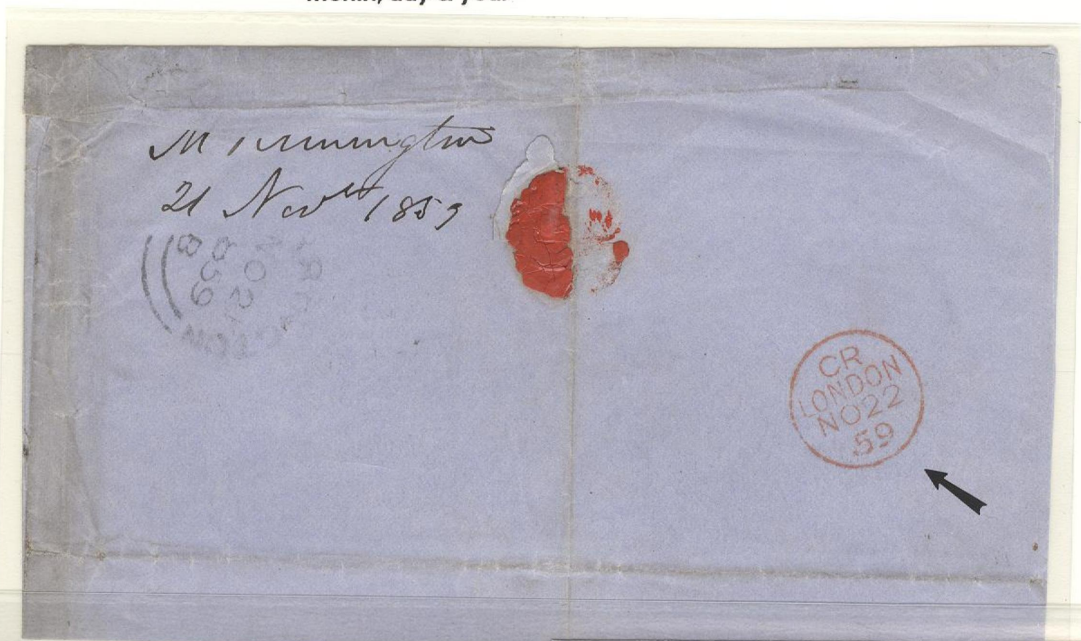
By removing the duplex-obliterator,  
THE HERETOFORE ORIGIN POSTMARK TYPES I or II ('CR' or 'RC')  
applied to out-going mail  
WERE CONVERTED TO AN 'ARRIVAL' or 'TRANSIT' POSTMARK  
applied to in-coming mail at London.

Only known in orange-red ink.

19mm Dater-Dial with 'CR' Code,  
month, day & year

22 NOVEMBER 1859

Arrival postmark  
on domestic  
inbound mail to  
London.



28 OCTOBER 1859

Arrival postmark on inbound overseas commercial mail  
from Amsterdam, Netherlands, to London.

# CHARLES RIDEOUT MACHINE...

SECOND TRIAL

MACHINE '1'  
Duplex Postmark Type II  
10 - 12 October 1866

Although Pearson Hill's 'Parallel Motion' Machine had been selected by the London Post Office in 1859 for wide-spread use, Charles Rideout pressed for additional trials, and **IN 1866 THE GENERAL POST OFFICE CONDUCTED A SECOND TRIAL, ALSO NOT SUCCESSFUL FOR RIDEOUT.**



19mm Dater-Dial with 'HS' Code, month, day & year along with a duplex obliterator having '1' between 11 (2.7.7.2) vertical bar lines.



12 OCTOBER 1866

London inner-city cover.

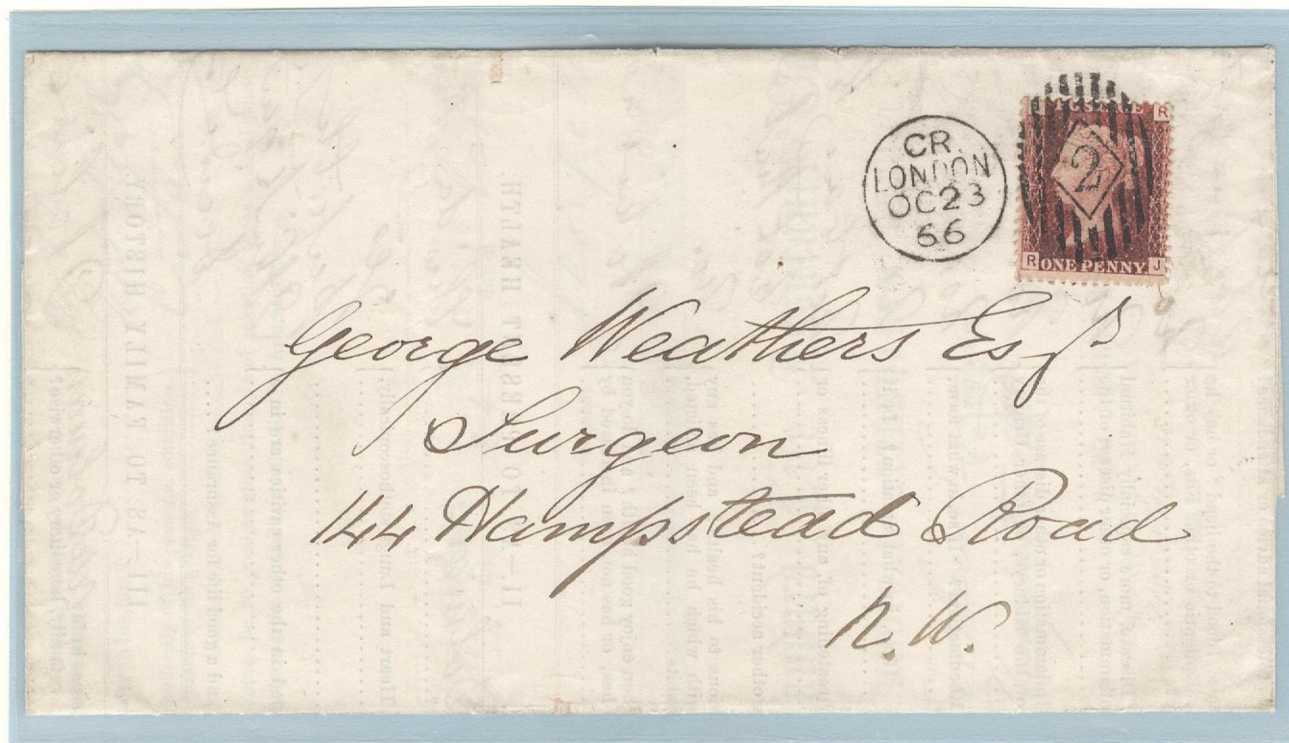
**One Penny ...  
Domestic single-weight letter-rate.**

**One of two reported covers.  
Latest known usage date.**

MACHINE '2'  
Duplex Postmark Type I  
23 October 1866 – 10 July 1867



19mm Dater-Dial with 'CR' Code, month, day & year along with a duplex obliterator having '2' between 2 (2.5.5.2) vertical bar lines.



23 OCTOBER 1866

Inner-city London commercial folded-letter.

One Penny..  
Domestic single-weight letter-rate.

Earliest known usage date.

# HINRICHSEN (AZEMAR) MACHINE...

FIRST TRIAL

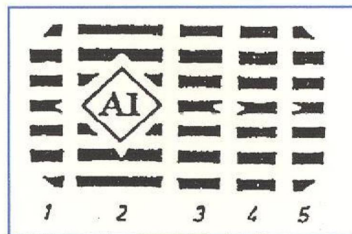
31 March – 24 June 1869

In 1865, two German inventors, Carl Fischer & J.C.W. Maas, applied in England for a patent on a new postmarking machine. Although initially unsuccessful, they received a patent in August, 1867.

Robert Hinrichsen of Germany became the manufacturer, and J.C. Azemar of London would be their sales representative.

**THE "AZEMAR" MACHINE, aka "HINRICHSEN" MACHINE IN GERMANY, HAD THREE DIE HEADS,**

each consisting of a 20mm diameter dater dial with the Code "YI" indicating "London" (14mm in length) and month, day & year dates, with a combination of obliterator bar-configurations.



7 APRIL 1869

Commercial folded-letter sent from London to Liverpool, arriving there on 8 April (backstamp).

Early days of the first trial had the dater-dial parallel with the upper bar of the obliterator.

Obliterator combination: 1.2.3.2.5

One Penny ...  
Domestic single-weight letter-rate.



# HINRICHSEN (AZEMAR) MACHINE...

FIRST TRIAL

31 March – 24 June 1869

For unknown reasons,  
THE DATER-DIALS' POSITIONS DURING THE FIRST TRIAL  
"FLOATED" DOWNWARD.

8 APRIL 1869

Commercial cover  
sent from London to  
the "Bank of Scotland"  
at Blairgowrie, arriving  
on  
9 April (backstamp).

Note mid-level  
position of dater-dial  
as well as the  
"missing" obliterator  
section. It is suspected  
that the postal  
authorities intentionally  
omitted the bar-strip.

One of two known  
examples.

Obliterator  
combination:  
1.2. 2.5.  
3.



28 APRIL 1869

Commercial cover  
sent from London to  
Rochester, arriving  
on 29 April  
(backstamp).

Two non-aligned  
dater dials, caused  
by improper  
machine tracking.

Obliterator  
combination:  
1.3.2.4.5



One Penny ...  
Domestic single-weight letter-rate.

# HINRICHSEN (AZEMAR) MACHINE...

FIRST TRIAL

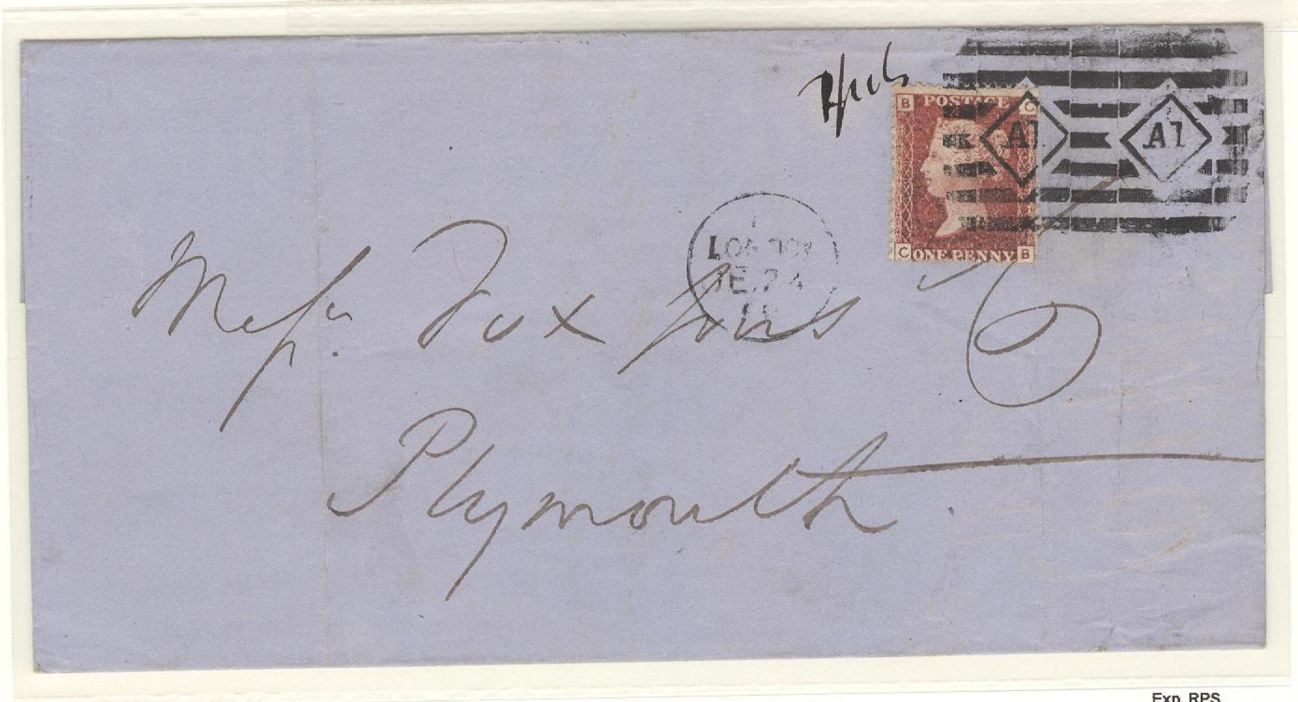
31 March – 24 June 1869

Between May-June of the first trial,  
**THE POSITION OF THE DATER DIAL SHIFTED DOWNWARD**  
and was now about even with the second-from-the-bottom bar,  
about 15mm to the left, of the obliterator.

3 JUNE 1869

Commercial cover  
sent from London to  
the "Belfast Banking  
Company" at  
Lurgan, Ireland,  
arriving on  
4 June (backstamp).

Obliterator  
combination:  
1.2.4.2.4.5



24 JUNE 1869

Exp. RPS

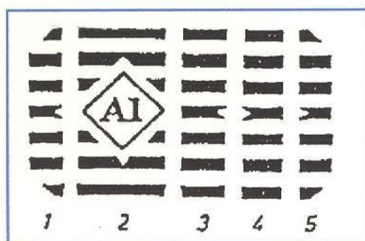
Commercial folded-letter sent from London to Plymouth,  
arriving on 25 June (backstamp).

Obliterator combination:  
1.2.3.2.5  
Latest known usage from Trial One.

One Penny ...  
Domestic single-weight letter-rate.

31 March – 24 June 1869

OVERSEAS DESTINATION MAIL ..  
CANADA



22 MAY 1869

Mixed-franking, commercial folded-letter  
from London to the "Niagara District Bank",  
at St. Catharines, Ontario, Canada,  
arriving there on 2 June (backstamp).  
11-day transit time.

Only known cover to an overseas destination.

Obliterator combination: 1.3.4.2.4.5

Seven Pence ...  
Single-weight letter-rate to Canada.

# HINRICHSEN (AZEMAR) MACHINE...

# POSTAL CARD TRIAL

4 January – 2 February 1871

With the introduction of government-issued postal stationery cards in October 1870, a need to quickly & effectively postmark large quantities of similarly-sized mail developed.

**THE 'HINRICHSEN -AZEMAR' MACHINE WAS TESTED POSTMARKING POSTAL STATIONERY CARDS FOR ONE MONTH IN EARLY 1871.**

Similar to a arrival postmark applied at Berlin & Hamburg, Germany, between 1867-1870, the rectangular dater 19x14mm was paired with an oval obliterator having "89" in the center surrounded by vertical dashes.



High dater-position usage:  
4 – 18 January 1871

Low dater-position usage  
23 January – 2 February 1871



9 JANUARY 1871

Commercial-mail postal stationery card sent from London to Coughton.

**Incomplete postmark impressions are typical for applications on postal cards.**

**Less than ten examples known.**

**Half Penny ...  
Domestic postcard-rate.**



# HINRICHSEN (AZEMAR) MACHINE...

# SECOND TRIAL

18 May – December 1871

DATER DIAL DIE-HEAD CODE "BB"

24 OCTOBER 1871

Commercial folded-letter mail sent from London to Havant, arriving on 25 October (backstamp).

Obliterator combination:  
1.2.3.5



19 JULY 1871

Commercial folded letter sent from London Haddam/Ware, arriving on 20 July (backstamp).

Obliterator combination:  
1.2.3.4.5.

One Penny ...  
Domestic single-weight letter-rate.

# HINRICHSEN (AZEMAR) MACHINE...

SECOND TRIAL

18 May – December 1871

DATER DIAL DIE-HEAD CODE "CB"

23 AUGUST 1871

Commercial letter mail  
sent from London to  
the "Bank of England"  
at Leeds, arriving on  
24 August  
(backstamp).

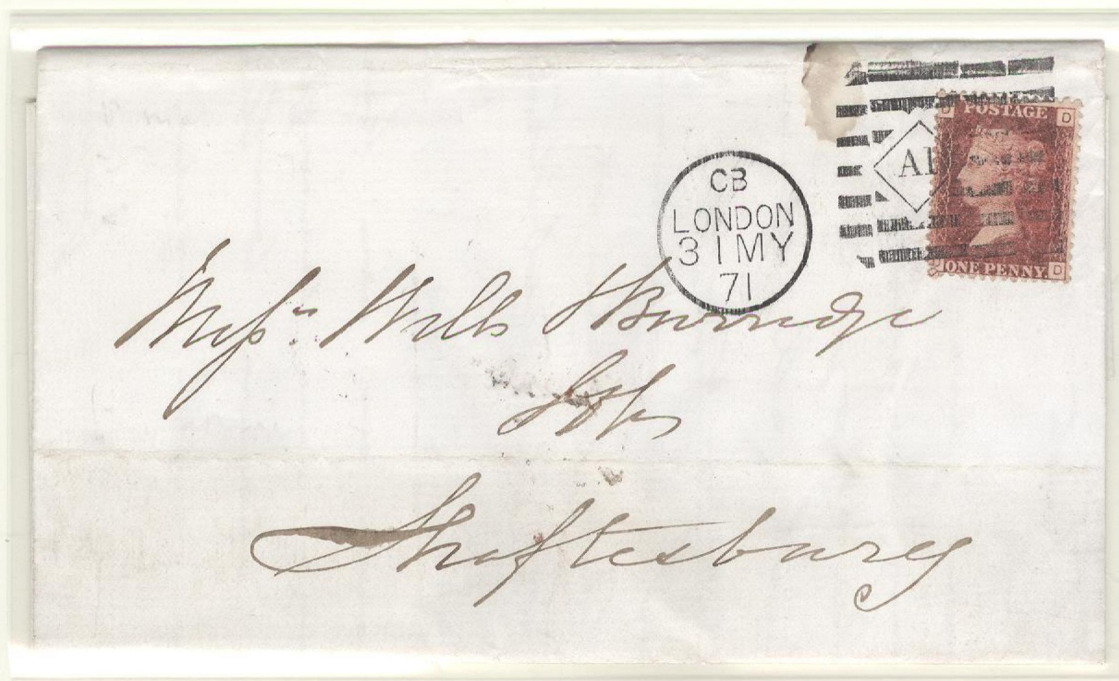
Obliterator  
combination:  
1.2.4.3.5



31 MAY 1871

Commercial  
folded letter  
sent from  
London to  
Shaftsbury,  
arriving on  
1 June  
(backstamp).

Obliterator  
combination:  
1.2.4.3



One Penny ...  
Domestic single-weight letter-rate.

# HINRICHSEN (AZEMAR) MACHINE...

SECOND TRIAL

18 May – December 1871

DATER DIAL DIE-HEAD CODE "AP"

MAIL TO FRANCE



4 NOVEMBER 1871

Commercial folded letter sent from London to Paris, France,  
with Calais transit postmark dated 5 November.

One of two examples known having this code;  
one of two foreign-bound mail examples for this trial.

Obliterator combination:  
1.2.4.5

Three Pence ...  
Single-weight letter-rate to France



# HINRICHSEN (AZEMAR) MACHINE...

# THIRD TRIAL

17 May – 8 November 1872

THE 'THIRD TRIAL' CONTINUED TO  
HAVE CODED DATER DIALS FOR EACH OF THE THREE DIE HEADS.

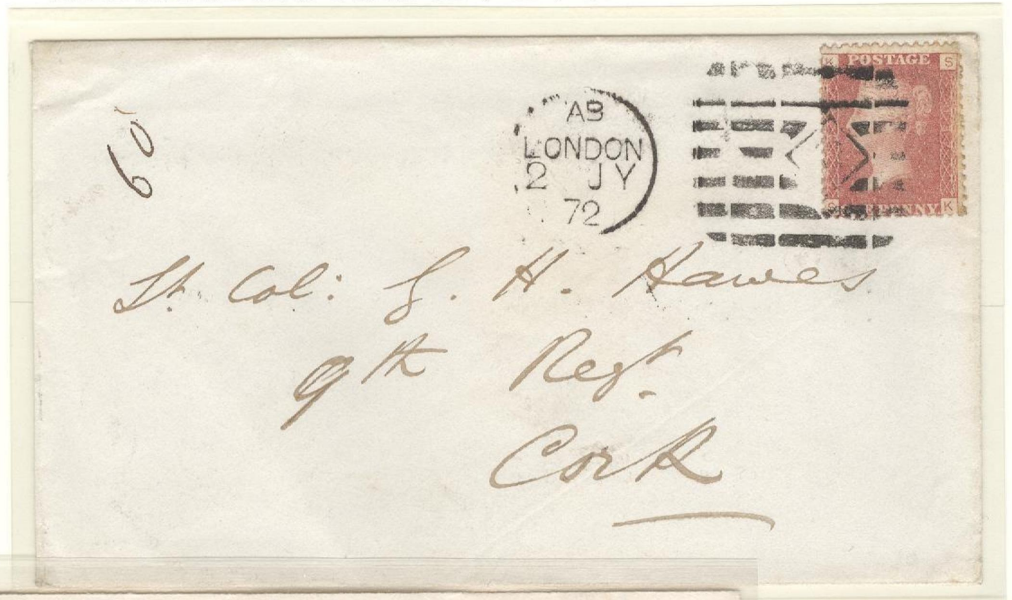
DATER DIAL DIE-HEAD CODES "AB", "BB", "CB"

## 'AB' DATER DIAL CODE

2 JULY 1872

Cover, sent from London to a military officer at Cork, Ireland, arriving on 3 July (backstamp).

Obliterator combination:  
1.3.2.5



## 'BB' DATER DIAL CODE

14 AUGUST 1872

Commercial cover sent from London to an attorney at Faringdon, arriving on 15 August (backstamp).

Obliterator combination:  
1.2.3.3



## 'CB' DATER DIAL CODE

29 MAY 1872

Cover, sent from London to Kirkby-Lonsdale, arriving on 30 May (backstamp).

Obliterator Combination:  
1.2.3.3



# HINRICHSSEN (AZEMAR) MACHINE...

THIRD TRIAL

17 May – 8 November 1872

FIRST DAY & LATE USAGE DATES

'C3' DATER DIAL CODE

FIRST DAY USAGE

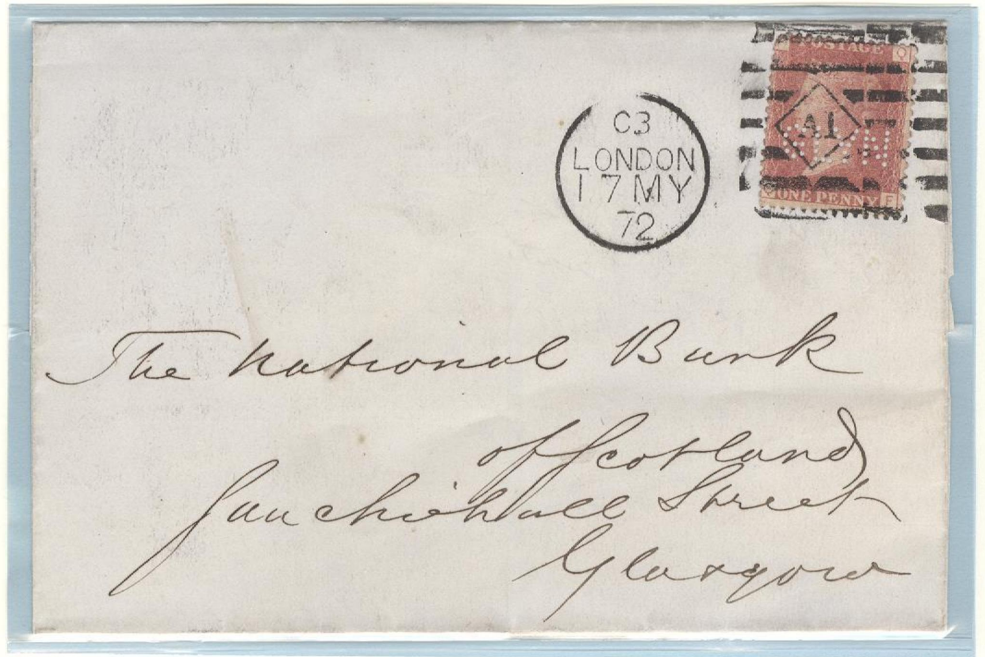
PERFIN "GLYN"

17 MAY 1872

Commercial folded-letter sent from London to "The National Bank of Scotland" at Glasgow, arriving on 18 May (backstamp).

Inadequate inking most probable cause of incomplete dater dial rim and dial code "C3"

Obliterator combination:  
1.2.3.3



'BB' DATER DIAL CODE

INNER-CITY MAIL

4 NOVEMBER 1872

Commercial cover sent within the City of London, delivered same day (backstamp).

Obliterator combination:  
1.2.4.5

One Penny ...  
Domestic single-weight letter-rate

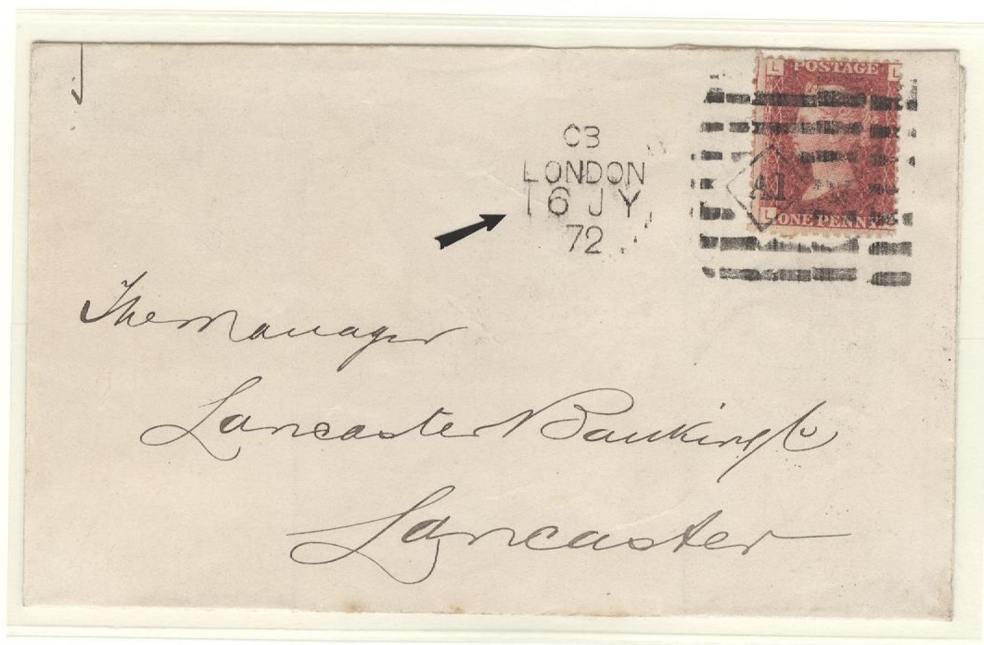
# HINRICHSSEN (AZEMAR) MACHINE...

THIRD TRIAL

17 May – 8 November 1872

After three trials over a period of four years,  
**THE GENERAL POST OFFICE AT LONDON DID NOT SELECT THE  
"HINRICHSSEN" ("AZEMAR") MACHINE FOR FIELD DISTRIBUTION,**  
because of its high maintenance and service requirements as  
well as its inefficiency in handling volume mail effectively.

The machine's design using needles to transport mail  
through the machine for postmarking was particularly  
determined to be ineffective.



**'CB' DATER DIAL CODE**

**16 JULY 1872**

Commercial cover sent from "Bank of England" at London to  
"The Lancaster Banking Company" at Lancaster,  
arriving on 17 July (backstamp).

The disintegration of the dater-dial rim on the "CB"  
die head is one example of the machine's deficiencies.

Obliterator combination:  
1.2.4.5

**One Penny ...  
Domestic single-weight letter-rate**

# SLOPER MACHINE...

LONDON .. 'CROSS & ORB' PERFIN

Standing: 2-3 November 1870

Inverted: 9-21 November 1870

With the introduction of the postal stationery card in October 1870, the General Post Office sought a device for effective postmarking of such cards in quantity.

THE 'SLOPER' PERFORATING MACHINE, HERETOFORE USED FOR BUSINESS DOCUMENTS, WAS INITIALLY TRIED IN THE CITIES OF LONDON, LIVERPOOL, MANCHESTER, EDINBURGH & BRADFORD.

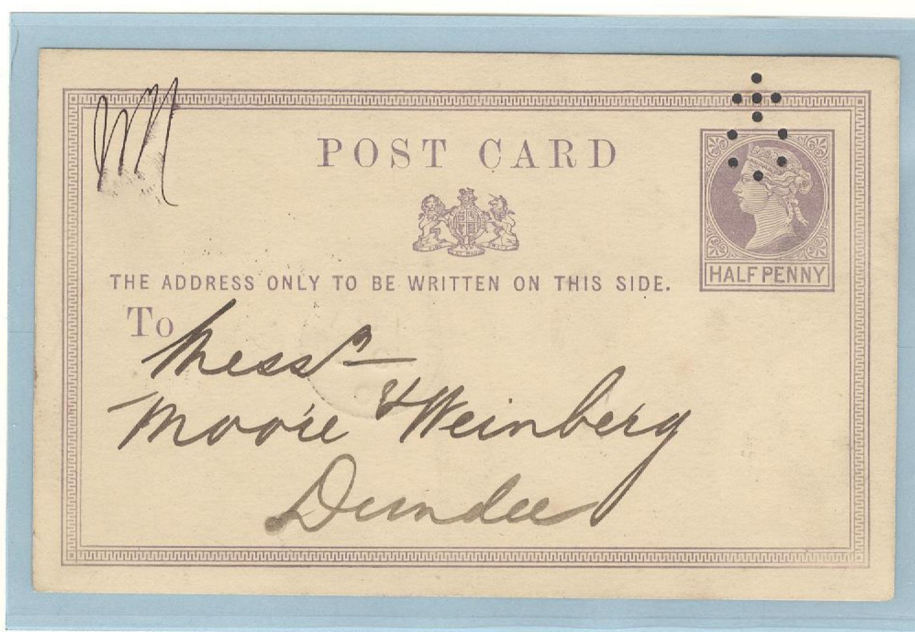
Several perforation designs were used during the five-year trial duration. The 'Cross & Orb' design used at London was the first design tried.

STANDING  
'CROSS & ORB'

2 NOVEMBER 1870

Commercial mail sent from London to Dundee, arriving on 3 November (backstamp).

Earliest known usage and one of two known examples of the 'Standing Cross & Orb'.



INVERTED  
'CROSS & ORB'

17 NOVEMBER 1870

Commercial mail from London to Devon.

One of seven known examples of the 'Inverted Cross & Orb'



# SLOPER MACHINE...

LONDON .. 'ARROW' PERFIN

15 November 1870 – 10 October 1873

The 'Sloper Machine' required the clerk to place a stack of multiple cards into the machine for perforation. **POSTAL CARDS NEAR THE TOP OF THE STACK HAD CLEARLY DEFINED HOLES, WHILE THOSE NEAR THE BOTTOM HAD SMALLER APPEARING, ROUGHLY PERFORATED, HOLES,** depending upon the condition of the perforation needles.

22 JANUARY 1872

Commercial mail sent from London to "The Union Bank of Scotland" at Selkirk.

Rough perforation and an indication that card was near the bottom of the stack of cards being perforated.



16 FEBRUARY 1873

Commercial mail sent from London to Devon.

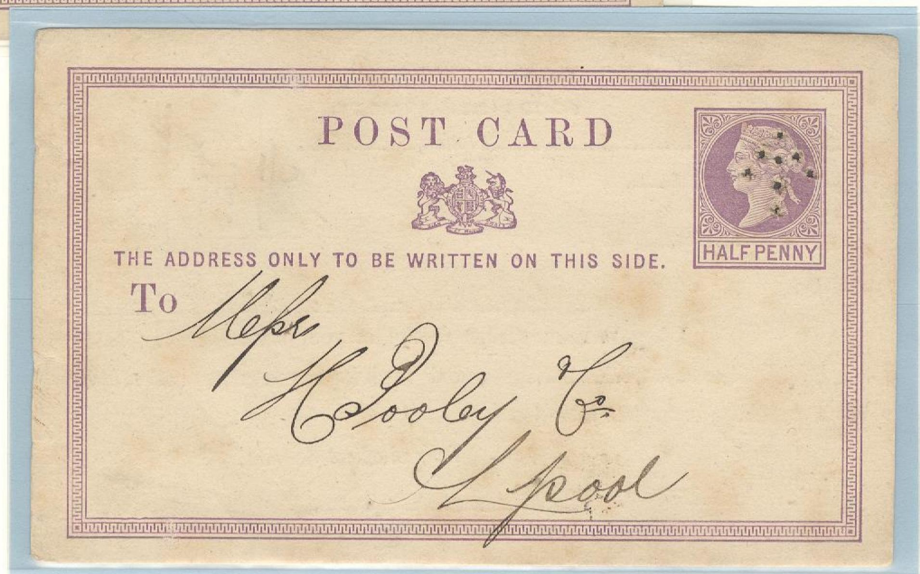
Clearly defined perforation and an indication that card was near the top of the stack of cards being perforated.



10 OCTOBER 1873

"London and North Western Railway" mail sent from Waterloo Station, London, to Liverpool.

Latest known usage.



# SLOPER MACHINE...

# LIVERPOOL .. 'ARROW' PERFIN

8 August 1871 – 21 January 1875

AT THE LIVERPOOL-CITY POST OFFICE, A SLOPER MACHINE WAS TRIED HAVING NEEDLES ENABLING 1mm (EARLY TRIAL) and 2mm (LATE TRIAL) DIAMETER PERFORATIONS.



31 OCTOBER 1871

Shipment notification mail to an addressee in Manchester.

1mm perforation holes



4 NOVEMBER 1874

Shipment notification mail to an addressee at Bradton.

2mm perforation holes

# SLOPER MACHINE...

# LIVERPOOL .. 'ARROW' PERFIN Varieties

8 August 1871 – 21 January 1875

The standard 'Liverpool Arrow' Perforation consisted of eight perforation holes, i.e. use of eight perforation needles.  
**OVER TIME, SOME OF THE PERFORATION NEEDLES BECAME DAMAGED OR BROKEN RESULTING IN PERFORATION VARIETIES.**

21 SEPTEMBER 1871

Although needles were intact, incorrect position of the card in the machine resulted in an incorrect 'Arrow' location.



13 MAY 1874

Six perforation holes with two needles broken.

Known use..  
13-16 May 1874.



25 AUGUST 1874

Five perforation holes with three broken needles.

Known use..  
15 August –  
19 September 1874

1 January 1871

**IN JANUARY 1871, A TRIAL USING SOME TYPE OF CUTTING DEVICE TO INVALIDATE POSTAL STATIONERY CARDS TOOK PLACE AT LIVERPOOL.**

**Such device was not from a 'Sloper Machine' since the latter was first delivered for trials at Liverpool in August 1871.**



1 JANUARY 1871

**Change-of-address notification sent from Liverpool to an addressee at Blyth**

**One of two card examples known.**

F EXCHANGE BUILDINGS, LIVERPOOL,  
1st January, 1871.

*Gentlemen*

We beg to inform you that we have removed to the above more commodious Premises, and take this opportunity of reminding you that, having our own Underwriters, together with a large Brokerage Business, First-class Agency at Lloyl's, London, and Corresponding Agents in all the principal Maritime Towns, we are in a position to effect Insurances on the best terms, and respectfully solicit your orders, which shall have our prompt attention.

We are,  
Yours respectfully,  
*Arthur H. Sibbey & Co.*

Reverse



# UNKNOWN MACHINE or DEVICE...

MANCHESTER .. 'CLIP'

Type I .. 'Half Round' Clip  
11 November 1870 – 24 January 1872

AT THE CITY OF MANCHESTER, A SERIES OF TRIALS WERE CONDUCTED BETWEEN 1870-1875 USING SOME TYPE OF HAND-OPERATED MACHINE OR DEVICE TO INVALIDATE POSTAL CARDS BY CLIPPING A PIECE FROM THE CARD.

Such "clipping" is today referred to as the 'Manchester Clip' Marking and is usually found on the right-side card margin with types varying in size and format.



22 NOVEMBER 1870

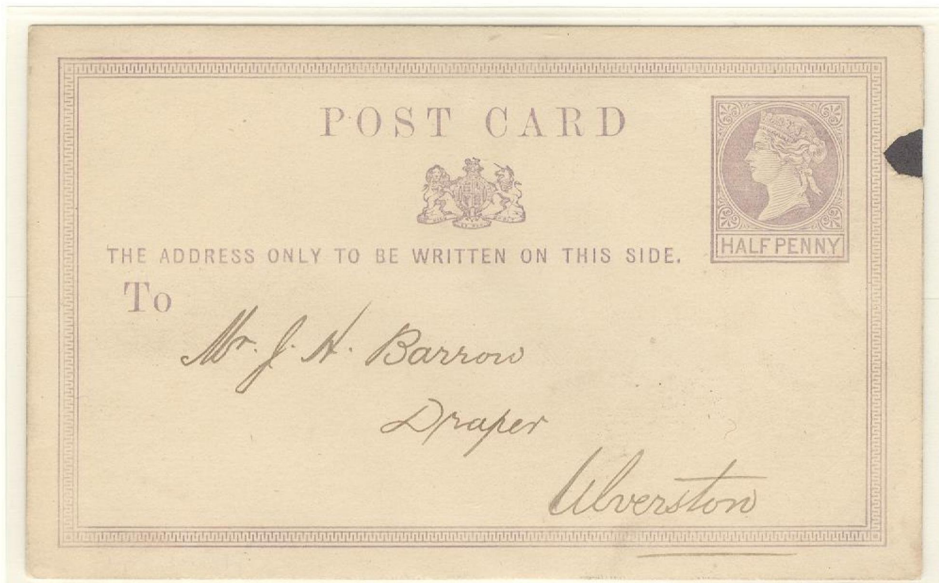
Commercial mail sent from Manchester  
to Lancaster.

**UNKNOWN MACHINE or DEVICE...**

**MANCHESTER .. 'CLIP'**

**Type II .. 'Spear Cut' Clip  
3 December 1870 – 15 December 1874**

The 'Spear Cut' is similar to the 'Wedge Cut' Clip (Type III) except that the former is usually deeper and is less angular.



**12 MAY 1871**

**Notification of sales representative's visit sent from Manchester to an addressee at Ulverston**



**7 JUNE 1871**

**Purchase order acknowledgement sent from Manchester to London.**

UNKNOWN MACHINE or DEVICE...

MANCHESTER .. 'CLIP'

Type III .. 'Wedge Cut' Clip  
29 June 1871 – 22 January 1875



25 JUNE 1873

Acknowledgement of receipt of mail sent from Manchester  
to the "Bank of Ireland".



11 SEPTEMBER 1874

Commercial mail sent from Manchester  
to London, arriving on 12 September.

Unusual is the fact that this postal card received a  
London arrival postmark (red ink), which  
obliterated the postage.

'CLIP' ON LEFT-SIDE OF CARD



11 SEPTEMBER 1874

Business communication sent to  
Glasgow, Scotland.

'CLIPS' ON BOTH SIDES OF CARD



11 SEPTEMBER 1874

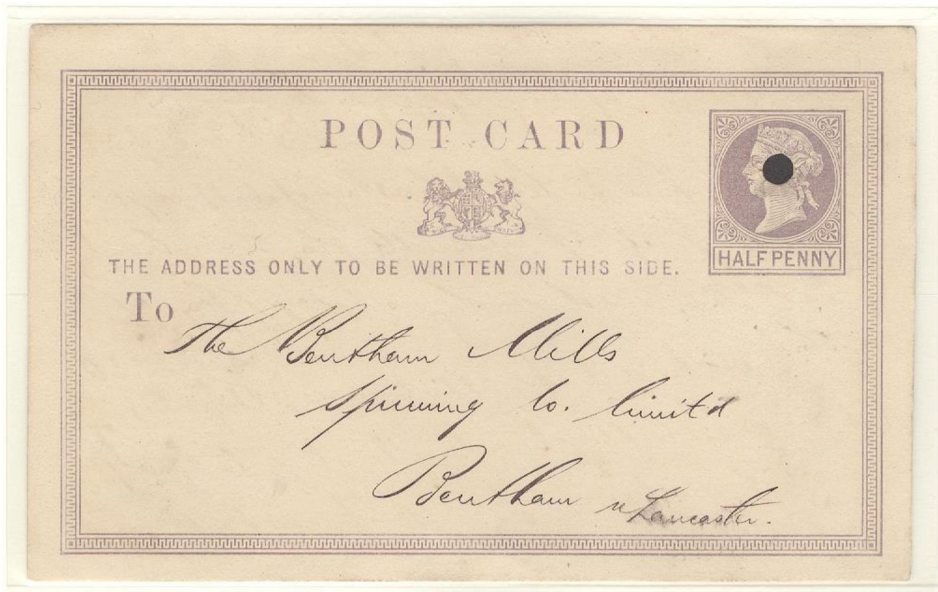
Acknowledgement of receipt of mail sent to  
the "Royal Bank of Scotland"

# UNKNOWN MACHINE or DEVICE...

# BRADFORD & EDINBURGH SINGLE-HOLE 'PUNCH'

1871 - 1874

**A 'SINGLE-HOLE PUNCH' WAS ANOTHER METHOD USED TO  
INVALIDATE POSTAL CARDS**  
with trials in the cities of Birmingham, Bradford, Edinburgh &  
Liverpool with hole diameters of 3 & 4mm.

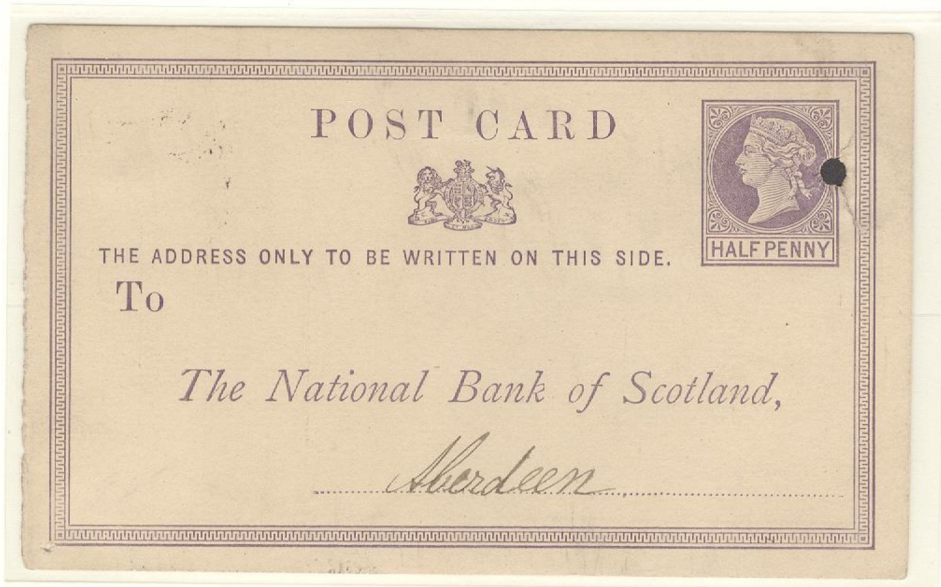


**BRADFORD**

**6 July 1871 – 21 September 1872**  
**4mm Punch Diameter**

**15 SEPTEMBER 1871**

**Commercial mail sent to Lancaster.**



**EDINBURGH**

**31 March 1871 – 12 October 1874**  
**3mm Punch Diameter**

**22 AUGUST 1871**

**Reply mail card sent to the "National Bank of Scotland"  
at Aberdeen, Scotland.**

April 1878

Having been unsuccessful in 1874 attempting to sell his postmarking machine to the New Zealand Post Office, Robert Vaile of Auckland, New Zealand, patented his machine in England in January 1877.

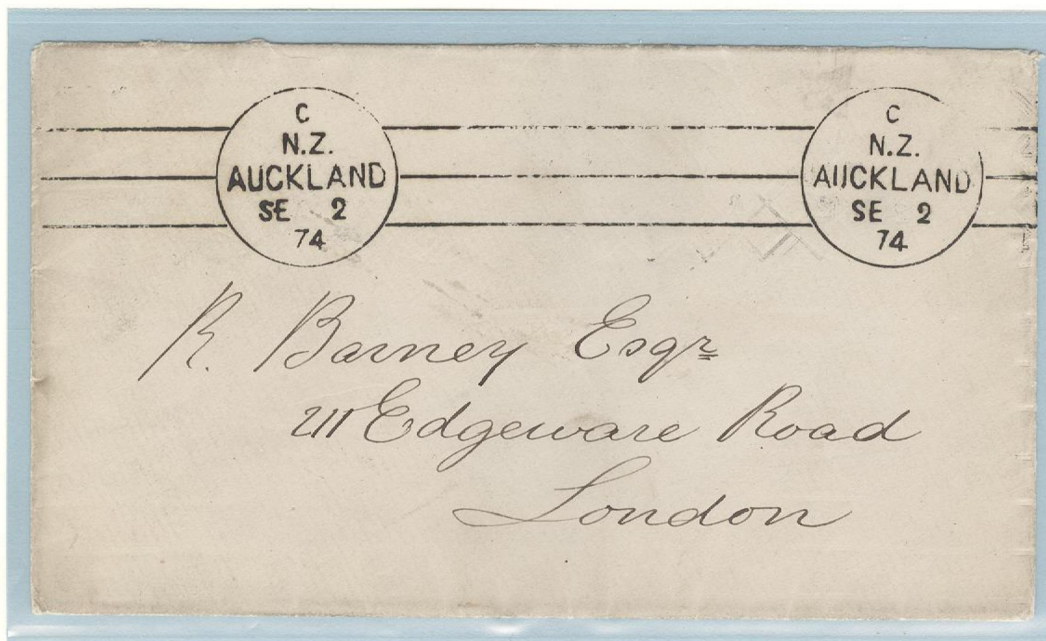
With the assistance of high-placed individuals in British society, **VAILE WAS SUCCESSFUL IN DEMONSTRATING HIS MACHINE AT THE BRITISH POST OFFICE (LONDON) SOMETIME DURING APRIL 1878.**

"Dummy" letters or postal stationery cards were prepared & applied three different postmarks ...

1. A THREE-LINE continuous bar obliterator having two dater dials (example below);
2. A TWO-LINE continuous bar obliterator having two dater dials;
3. A ZIG-ZAG continuous-pattern obliterator having two dater dials.

Despite the trial having taken place at London in 1878, all dater dials indicate "C. N.Z. Auckland, SE 2, 74".  
No mail was processed for actual delivery.

**FOR UNKNOWN REASONS, THE MACHINE WAS REJECTED BY THE POST OFFICE, officially reported on 17 May 1878.**



One of seven surviving examples:  
five examples in private collections &  
two in the British Postal Archives.

Only known example having the obliterator design shown (Item '1'),  
with minor offset of a 'Zig-Zag' obliterator pattern (Item '3').

## HOSTER MACHINE...

## POSTMARK TYPE II

\* 28mm Single-Circle Dater Dial with 14 thin bars descending from left to right with NO obliterator-corners left of dater dial.

12 July, 1-7 September 1883

In 1883, Albert Hoster acquired the assets of 'Haller & Company' of Germany and subsequently established the 'Postal Stamping & Patent Machinery Company Limited' in London, England.

Between 1883-1886, Albert Hoster sold the General Post Office at London eight postmarking machines.

The 'Hoster Machine' was hand-operated having TWO postmarking dies able to postmark two pieces of mail with each rotation of the hand-crank.

"TYPE I" HOSTER MARK (ONE EXAMPLE KNOWN) DATED 27 OCTOBER 1882 WAS A DEMONSTRATION MARK APPLIED BY A 'HALLER' PROTOTYPE MACHINE, WITH "TYPE II" AND BEYOND MARKS BEING APPLIED BY DEDICATED 'HOSTER' MACHINES.

DURING THE FIELD-TRIAL & USAGE YEARS 1883-1893, A VARIETY OF ORIGIN & ARRIVAL POSTMARKS WERE TRIED.



7 SEPTEMBER 1883

Cover-clip, postmarked at London, from the **FIRST TRIAL** of a dedicated 'Hoster Machine' obliterating 4-Pence postage stamp

One of four known examples.  
Latest known usage date

# HOSTER MACHINE...

# OFFICIAL MAIL .. TRIAL

\* 28mm single circle dater dial (red ink) indicating "Official" having one star in dial.

10 July 1884 – 22 August 1884

BANK OF ENGLAND MAIL



16 AUGUST 1884

Official free-frank  
'Bank of England' cover,  
sent to Feltham and re-directed  
to Isleworth.

Transit & Arrival Postmarks  
(Front & Reverse)  
"Feltham,  
August 16, 1884"  
"Isleworth,  
August 18, 1884"

One of five known



# HOSTER MACHINE...

# POSTMARK TYPE III

\* 14 thick bars descending from left to right with NO obliterator-corners left of dater dial.

28 April 1884 – 2 March 1887

25 JULY 1884

LOCAL  
LONDON MAIL

Between July-August 1884, the word "London" was smaller in size type than in other periods.

Dater dials are found with/without center star ... possibly to designate Postmark 'Die 1' versus 'Die 2'.

One Penny .. Domestic single-weight letter-rate.



MAIL TO ARGENTINA

23 SEPTEMBER 1884

Commercial folded-letter, postmarked at London, sent to Buenos Aires, arriving on 26 October (reverse) 33-day transit time.

Four Pence.. Single-weight letter-rate to Argentina.

Only known '1884' overseas destination Hoster Mail.

# HOSTER MACHINE...

# POSTMARK TYPE IV

\* 14 thick bars descending from left to right  
WITH oblierator-corners left of dater dial.

15 January 1885 – 3 June 1887

LOCAL LONDON MAIL

15 JANUARY 1885

Postal stationery  
card use.

Earliest recorded  
usage of Postmark  
Type IV.

"ZZ" in dater dial  
denotes  
"Late Mailing".

Half Penny ..  
Domestic  
postal card rate.



6 JANUARY 1886

Cover use.

One Penny..  
Domestic  
single-weight  
letter-rate.

# HOSTER MACHINE...

# POSTMARK TYPE IV

\* 14 thick bars descending from left to right  
WITH obliterator-corners left of dater dial.

15 January 1885 – 3 June 1887

OVERSEAS DESTINATION MAIL

## MAIL TO FRANCE

16 MAY 1885

Commercial  
cover to  
Paris, France.



## MAIL TO GERMANY

21 OCTOBER 1886

Mourning cover  
to  
Stade, Germany

2-1/2 Pence ...  
Single-weight letter-rate to each France & Germany

# HOSTER MACHINE...

# POSTMARK TYPE IV

\* 14 thick bars descending from left to right  
WITH obliterator-corners left of dater dial.

15 January 1885 – 3 June 1887

MAIL TO INDIA



21 JANUARY 1887

Commercial cover,  
sent to Madras, India,  
"Via Brindisi", Italy

Transit & Arrival Postmarks:  
(Reverse)

"27 January 1887 .. Sea Post Office"  
"9 February 1887 .. Nungumraukum"  
"9 February 1887 .. Madras"

19-day transit time.

**Five Pence..**  
**Single-weight letter-rate to India.**

# HOSTER MACHINE...

# POSTMARK TYPE IV

\* 14 thick bars descending from left to right  
WITH obliterator-corners left of dater dial.

15 January 1885 – 3 June 1887

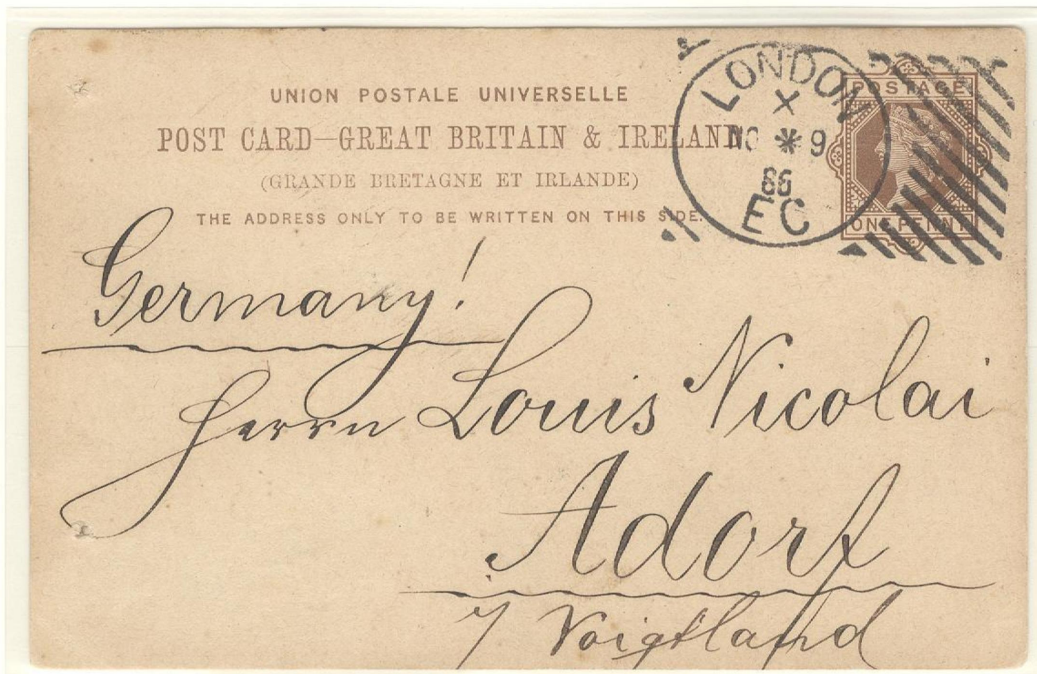
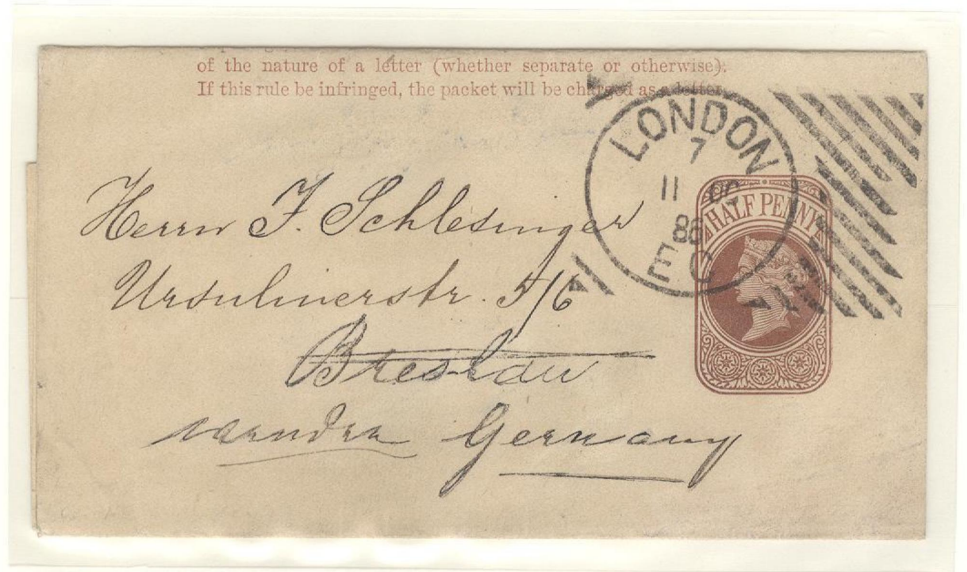
MAIL TO GERMANY

## NEWSPAPER WRAPPER

11 OCTOBER 1886

Newspaper  
or printed circular  
sent to  
Breslau, Germany.

Half Penny ..  
Printed-matter  
rate to Germany.



## POSTAL STATIONERY CARD

9 NOVEMBER 1886

Commercial mail  
to Adorf,  
Province Saxony,  
Germany

One Penny..  
Postcard-rate for  
mail to Germany.

Dater dials with/without star in the middle denote Postmark Die '1' and/or '2'.

# HOSTER MACHINE...

# POSTMARK TYPE V

\* 14 thick bars descending from left to right with obliterator-corners left of dater dial, similar to 'Type IV', albeit with figures "11" & "22" in lower-right obliterator foot.

22 December 1884 – 3 January 1887

OVERSEAS DESTINATION MAIL



## MAIL TO AUSTRALIA

29 OCTOBER 1885

Mourning cover  
sent to  
Melbourne, Australia,  
arriving on  
7 December 1885  
(backstamp).  
39-day transit time.

Six Pence ..  
Single-weight  
letter-rate to Australia.

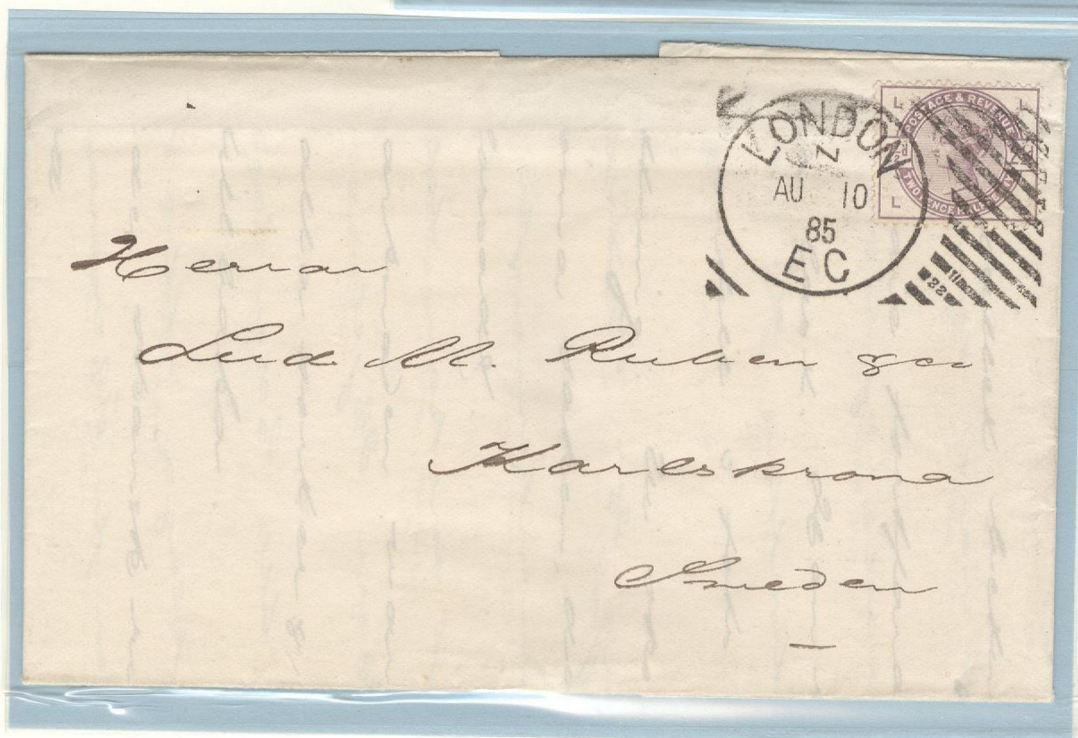


## MAIL TO SWEDEN

10 AUGUST 1885

Commercial  
folded-letter,  
sent to  
Karlskrona, Sweden.

2-1/2 Pence..  
Single-weight letter-  
rate to Sweden.



# HOSTER MACHINE...

## POSTMARK TYPE VI

\* 14 thick bars descending from left to right with obliterator-corners left of dater dial, similar to 'Postmark Type V, except Roman Numeral "XXII", "22" and "1" in lower-right obliterator-foot.

23 December 1884 – 14 July 1886

FOREIGN DESTINATION MAIL



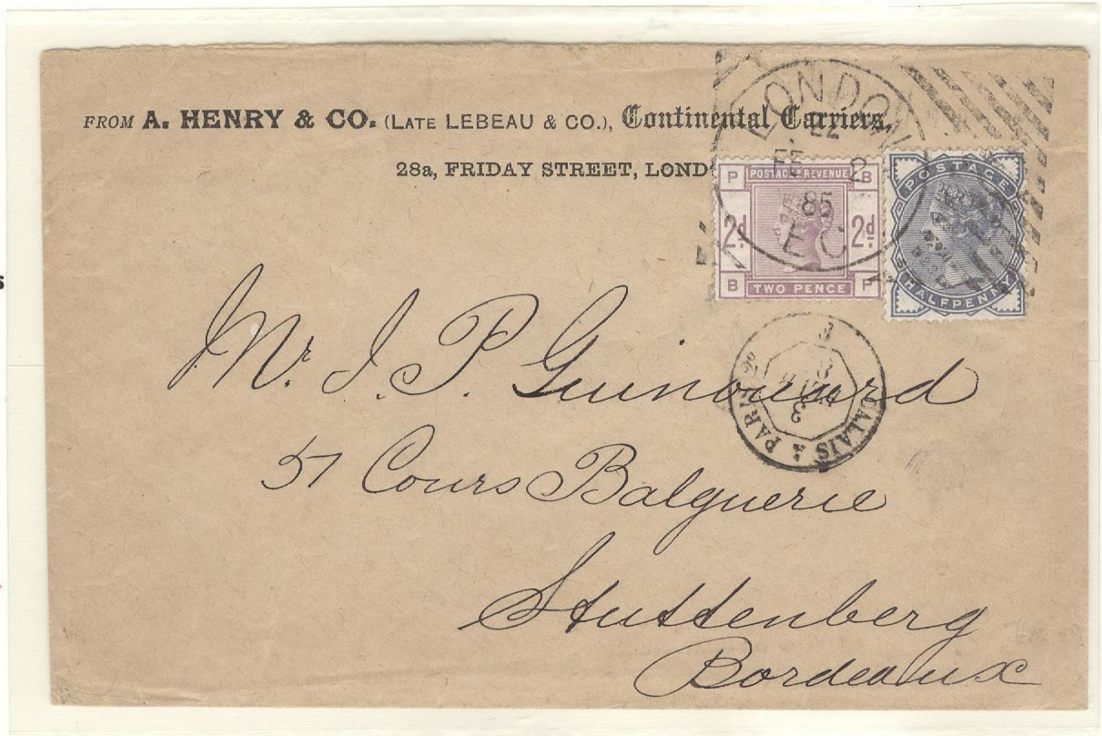
MAIL TO FRANCE

2 FEBRUARY 1885

Commercial cover, sent to Bordeaux, France, arriving on 6 February via Calais (backstamp).  
4-day transit time.

"ZZ" in origin dater-dial denotes late arrival at post office

2-1/2 Pence...  
Single-weight letter-rate to France.



THE SHOOTING TIMES,  
AND KENNEL NEWS,

Edited by LEWIS CLEMENT ("WILDFOWLER.")  
EAST TEMPLE CHAMBERS, WHITEFRIARS STREET,  
FLEET STREET, LONDON, E.C.



POSTAGE DUE  
MAIL TO CANADA

12 AUGUST 1885

Commercial advertising cover, sent to Guelph, Ontario, Canada, arriving on 24 August (backstamp).  
12-day transit time.

One Penny franked .. should have been four pence for single-weight letter-rate to Canada (sealed envelope).  
Thus, "T" and "6" markings applied at London for 3 Pence postage due + 3 Pence penalty.



A. Chadwick Esq  
Judge  
Guelph  
Ontario  
Canada  
America

# HOSTER MACHINE...

## POSTMARK TYPE VI

\* 14 thick bars descending from left to right with obliterator-corners left of dater dial, similar to 'Postmark Type V, except Roman Numeral "XXII", "22" and "1" in lower-right obliterator-foot.

23 December 1884 – 14 July 1886

**LARGE SIZE MAIL**  
(H = 141mm W = 187mm)



**CHRISTMAS MAIL**

**24 DECEMBER 1885**

Christmas Greetings Card, sent to Rothesay Bute.

**One Penny..**  
**Domestic single-weight letter-rate.**



# HOSTER MACHINE...

# POSTMARK TYPE VII

\* 14 thick bars descending from left to right with obliterator-corners left of dater dial, similar to 'Postmark Type V, except figures "23" (machine serial number) and "1" or "2" (die numbers) in lower-right obliterator-foot.

2 April 1885 – 28 October 1885



## DOMESTIC POSTAL STATIONERY COVER

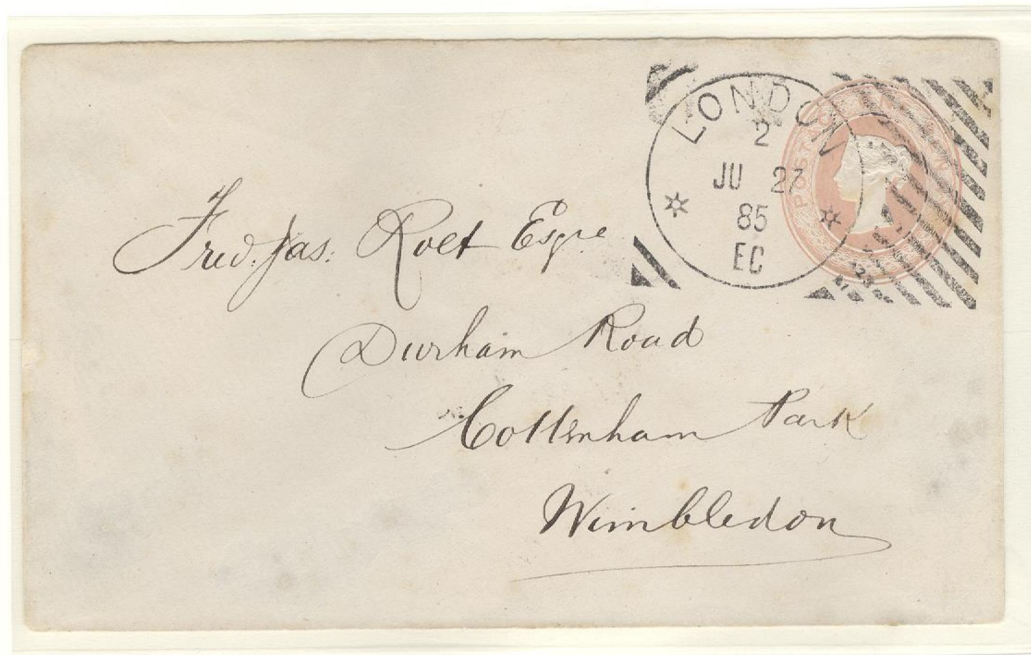
27 JULY 1885

Domestic postal stationery cover with embossed franking.

First postmark type to designate each of the two machine dies.

"1" in lower right obliterator-foot = Die One.

One Penny... Domestic single-weight letter-rate.



## DOMESTIC POSTAL STATIONERY CARD

8 SEPTEMBER 1885

Note "2" in lower right obliterator-foot = Die Two

Half Penny ... Domestic postcard rate.

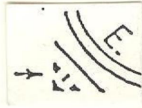
# HOSTER MACHINE...

# POSTMARK TYPE VIII

\* 17 thin bars descending from left to right with postmark die indicators "1" or "2" at lower-left of double-circle dater dial along with machine serial number (often unreadable) "29" at upper-left. Year between "EC" in dater dial with & without center star.

23 November 1885 – 25 December 1887

POSTMARK DIE '1' WITH 'STAR' IN DATER-DIAL CENTER

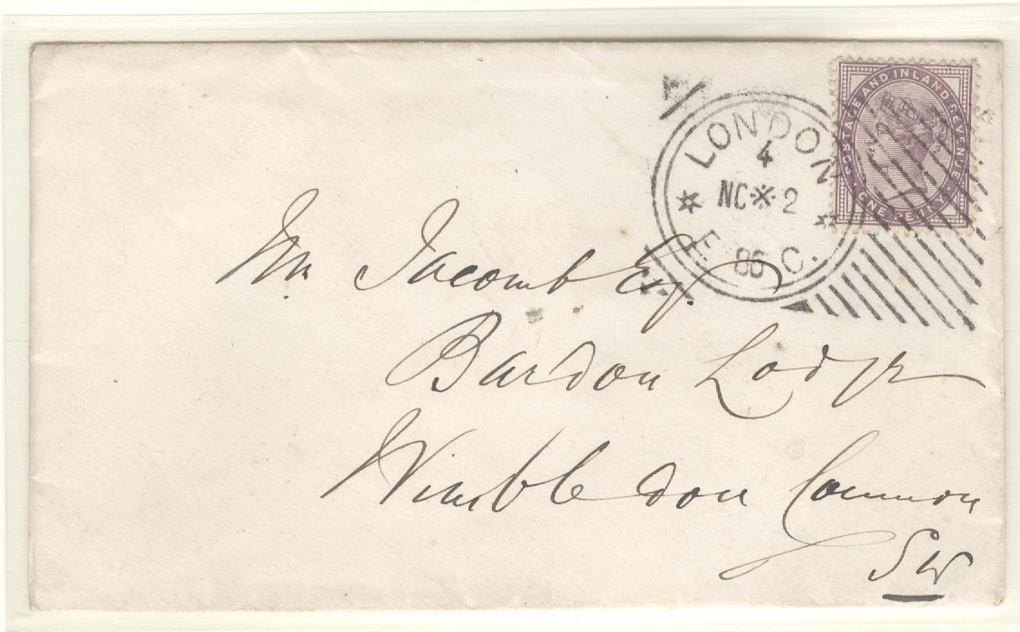


**MAIL TO NORWAY**

**10 AUGUST 1886**

Commercial folded-letter sent to Bergen, Norway.

2-1/2 Pence...  
Single-weight letter-rate to Norway.



**LOCAL CITY MAIL**

**2 NOVEMBER 1886**

Inner-London commercial cover mail.

One Penny...  
Domestic single-weight letter-rate.

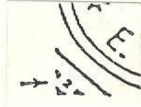
# HOSTER MACHINE...

## POSTMARK TYPE VIII

\* 17 thin bars descending from left to right  
 with postmark die indicators "1" or "2" at  
 lower-left of double-circle dater dial along  
 with machine serial number  
 (often unreadable) "29" at upper-left.  
 Year date between "EC" in dater dial with  
 & without center star.

23 November 1885 – 25 December 1887

POSTMARK DIE '2' WITH 'STAR' IN DATER-DIAL CENTER



15 APRIL 1886

Commercial cover  
 sent to  
 Edinburgh,  
 Scotland,  
 arriving on 16 April  
 (backstamp).



9 APRIL 1887

Telegram-enclosure  
 cover, inner-city  
 London mail,  
 delivered on same  
 day.

Only known example.

One Penny...  
 Domestic single-weight letter-rate.

# HOSTER MACHINE...

# POSTMARK TYPE IX

\* 16-19 (often under-inked) thick bars descending from left to right with NO postmark die indicators or machine serial number. Month & day indication parallel with a pair of stars in dater dial.

19 April 1887 – 16 December 1891

This Hoster Postmark Type only found on foreign-destination mail.

## DOUBLE-FRANKED RE-DIRECTED MAIL IN NEW ZEALAND

18 MAY 1887

Cover, postmarked at London, sent to Nelson, New Zealand. Upon arrival, additional franking added, re-directed to Christchurch, arriving there on 2 July (backstamp). 45-day transit time.

**Six Pence...**  
Single-weight letter-rate to New Zealand with added 'Two (New Zealand) Pence' added for re-direction of mail.

Only known re-directed mail example with double franking and postmarked by a Hoster Machine.



## MAIL TO GERMANY

31 MARCH 1888

Mixed franking cover, sent to Dresden, Germany, arriving on 2 April (backstamp). Two-day transit time.

**2-1/2 Pence ...**  
Single-weight letter-rate to Germany.



# HOSTER MACHINE...

# POSTMARK TYPE IX

\* 16-19 (often under-inked) thick bars descending from left to right with NO postmark die indicators or machine serial number. Month & day indication parallel with a pair of stars in dater dial.

19 April 1887 – 16 December 1891

MAIL TO FRANCE

3 AUGUST 1887

Commercial cover,  
sent to Paris.



15 OCTOBER 1887

Commercial  
folded-letter mail sent  
to Cognac.

2-1/2 Pence ...  
Single-weight letter-rate to France.

# HOSTER MACHINE...

# POSTMARK TYPE IX

\* 16-19 (often under-inked) thick bars descending from left to right with NO postmark die indicators or machine serial number. Month & day indication parallel with a pair of stars in dater dial.

19 April 1887 – 16 December 1891

## POSTMARK DIES WITH & WITHOUT 'STAR' IN CENTER OF DIAL

(Possibly denotes Postmarking Dies '1' = Star, '2' No Star)

MAIL TO BELGIUM

'STAR' IN CENTER OF DATER DIAL

23 JANUARY 1889

Commercial cover sent to Brussels, Belgium.



MAIL TO FRANCE

NO 'STAR' IN CENTER OF DATER DIAL

29 JANUARY 1889

Commercial cover sent to Paris, France.



2-1/2 Pence ...

Single-weight letter-rate to Belgium & France.

# HOSTER MACHINE...

## POSTMARK TYPE IX

\* 16-19 (often under-inked) thick bars descending from left to right with NO postmark die indicators or machine serial number. Month & day indication parallel with a pair of stars in dater dial.

19 April 1887 – 16 December 1891

MAIL TO FRANCE

SMALL SIZE MAIL  
(h = 73mm W = 94mm)



22 NOVEMBER 1890

So-called 'Lady's' cover, sent to  
Dunieres/Loire, France,  
arriving on 24 November.  
Two-day transit time.

Smallest known size mail handled by the  
Hoster Postmarking Machine.

2-1/2 Pence ..  
Single-weight letter-rate to France.

# HOSTER MACHINE...

# POSTMARK TYPE IX

\* 16-19 (often under-inked) thick bars descending from left to right with NO postmark die indicators or machine serial number. Month & day indication parallel with a pair of stars in dater dial.

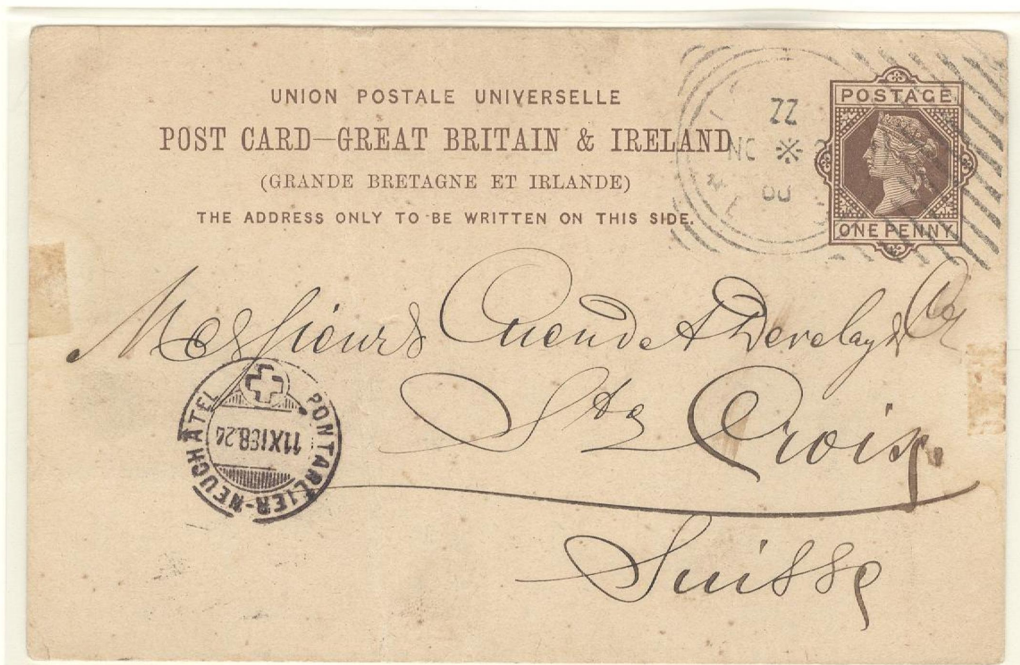
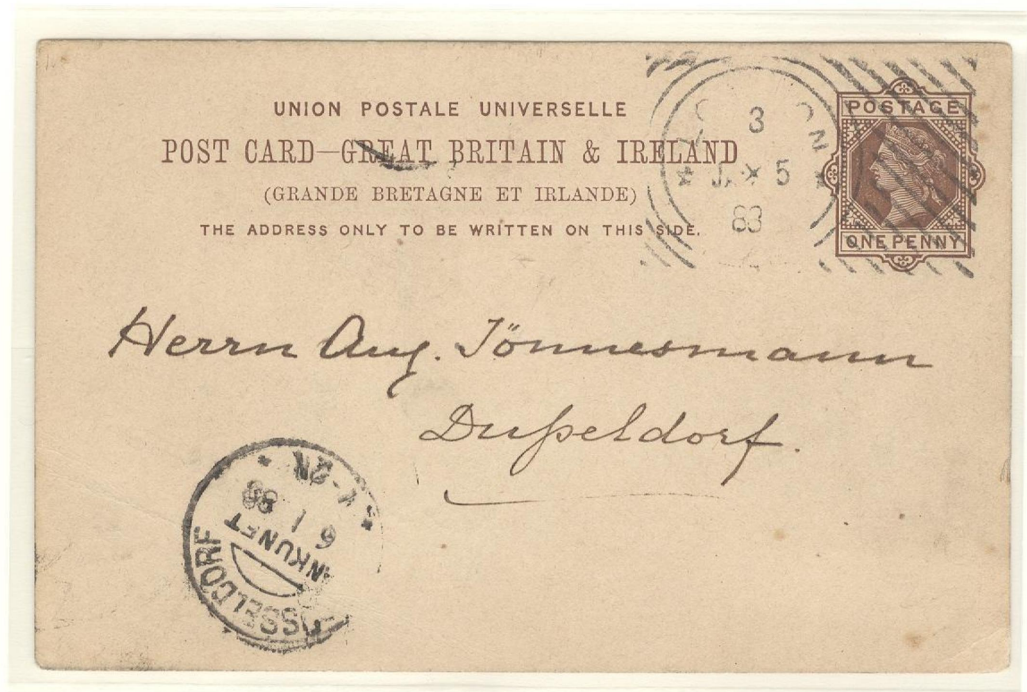
19 April 1887 – 16 December 1891

## UPU POSTAL STATIONERY CARDS TO FOREIGN DESTINATIONS

### MAIL TO GERMANY

5 JANUARY 1888

Commercial mail,  
UPU Postal Card,  
sent to  
Düsseldorf,  
Germany.



### MAIL TO SWITZERLAND

3 NOVEMBER 1888

Commercial mail,  
UPU Postal Card, sent to  
St. Croix  
(Pontarlier-Neuchâtel),  
Switzerland.

"ZZ" in dater-dial  
denotes 'late delivery'  
at post office.

One Penny ...  
UPU Postcard-Rate to foreign destinations.



## HOSTER MACHINE...

## POSTMARK TYPE X

\* 19 (often under-inked) thick bars descending from left to right with no postmark die indicators or machine serial number. Double Circle dater dial having date & year on one line, Code 'A' at the top and bottom code letters 'G', 'O', 'R', 'W' or 'ZZ'.

12 January 1889 – 28 February 1891

LATE DELIVERY OF MAIL AT THE POST OFFICE



10 FEBRUARY 1891

Cover, sent to Birmingham,  
arriving on 11 February (backstamp).

"ZZ" in dater dial =  
'Late receipt of mail at post office'

One Penny ..  
Domestic Single-weight letter-rate.

# HOSTER MACHINE...

## POSTMARK TYPE XI

\* 19 (often under-inked) thick bars descending from left to right with NO postmark die indicators or machine serial number. Double Circle dater dial having code number at top and with year date at bottom of dial WITHOUT any stars or 'EC' indication.

21 October 1889 – 30 November 1891

FOREIGN DESTINATION MAIL



16 FEBRUARY 1891

UPU Postal Stationery Card,  
sent to a convent at  
Limbourg, Belgium,  
arriving on 17 February.

**One Penny ..**  
**Postal card rate for foreign-bound mail.**

# HOSTER MACHINE...

# POSTMARK TYPE XII

\* 14 (often under-inked) thick bars descending from left to right with NO postmark die indicators or machine serial number. Double circle dater dial with code number at top, year indication between "EC" at bottom and with/without star in center dial.

1 March 1890 – 12 June 1893

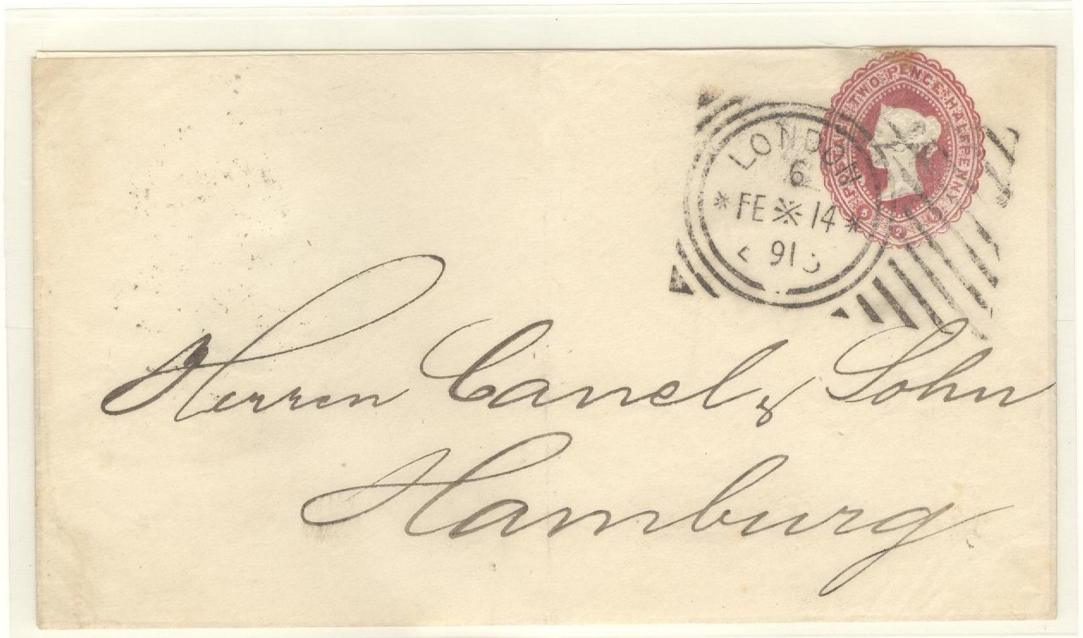
## POSTAL STATIONERY FOREIGN DESTINATION MAIL

**MAIL TO GERMANY**

**14 FEBRUARY 1891**

Postal stationery cover, commercial mail, to Hamburg, Germany, arriving on 16 February (backstamp).

**2-1/2 Pence .. Single-weight letter-rate for mail to Germany.**



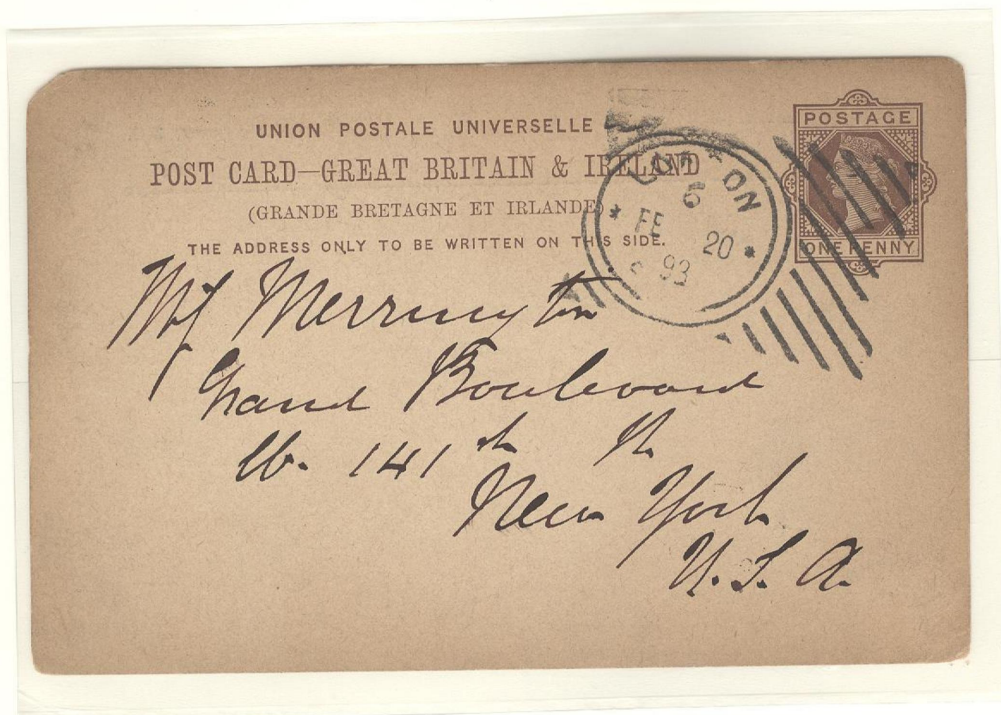
**MAIL TO THE UNITED STATES OF AMERICA**

**20 FEBRUARY 1893**

UPU Postal Stationery Card, commercial mail, sent to New York City, arriving on March 1 (backstamp). 9-day transit time.

Readable "(18)93" year dates are few on this postmark type.

**One Penny.. UPU Postcard-Rate for foreign destination mail.**



# HOSTER MACHINE...

# POSTMARK TYPE XII

\* 14 (often under-inked) thick bars descending from left to right with NO postmark die indicators or machine serial number. Double circle dater dial with code number at top, year indication between "EC" at bottom and with/without star in center dial.

1 March 1890 – 12 June 1893

ADVERTISING COVER MAIL



8 JANUARY 1891

Early-use advertising cover mail in Britain  
("New York Herald" Branch Office in London)  
Inner-city mail.

One Penny..  
Domestic single-weight letter-rate.

# HOSTER MACHINE...

## POSTMARK TYPE XIII

\* 16-18 (often under-inked) thin bars descending from RIGHT TO LEFT and three bars descending from left to right on left-side of dater dial with no postmark die indicators or machine serial number. Double circle dater dial with numerical or letter code at top, with or without star in dial center, and year date between "EC" at bottom.

October 1889 – 12 September 1893

**MAIL TO  
SWITZERLAND**

**13 JUNE 1890**

Cover, sent to  
Geneva,  
Switzerland,  
arriving on  
14 June  
(backstamp).  
One day transit  
time.

**2-1/2 Pence..  
Single-weight  
letter-rate for mail  
to Switzerland.**



**DOMESTIC POSTAL  
STATIONERY LETTER-  
CARD**

**15 MARCH 1892**

Letter-card, sent to  
Anerley,  
arriving on 16 March  
(backstamp).

**One Penny ..  
Domestic postal  
stationery letter-card  
mail rate.**

# HOSTER MACHINE...

# POSTMARK TYPE XIII

\* 16-18 (often under inked) thin bars descending from RIGHT TO LEFT and three bars descending from left to right on left-side of dater dial with no postmark die indicators or machine serial number. Double circle dater dial with numerical or letter code at top, with or without star in dial center, and year date between "EC" at bottom.

October 1889 – 12 September 1893

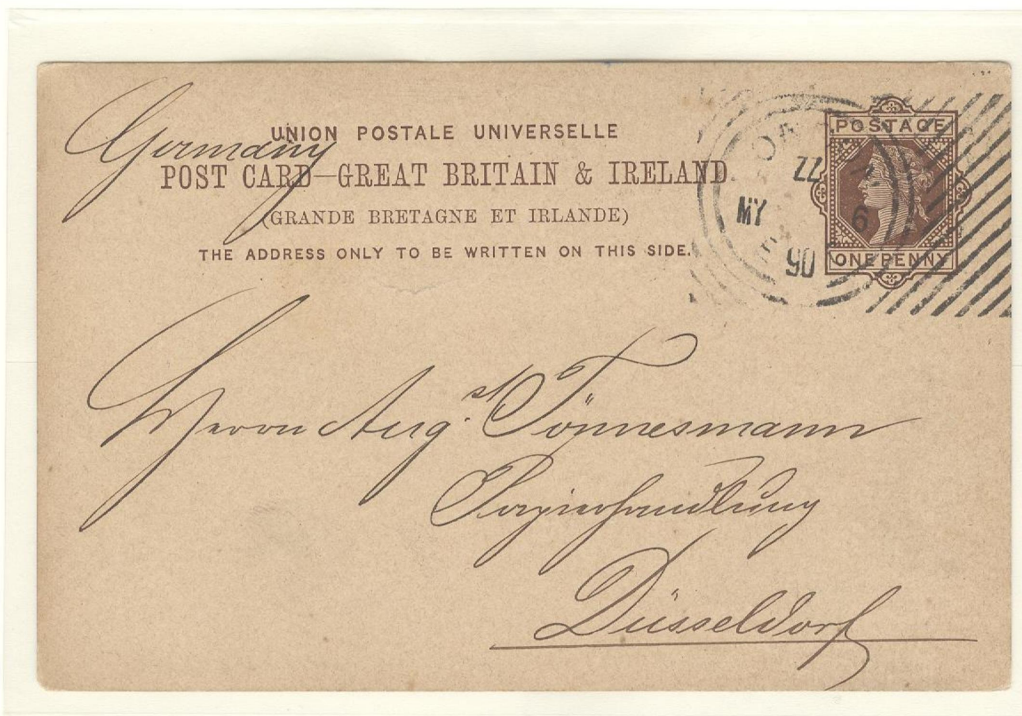
## POSTAL STATIONERY USAGE TO GERMANY

UP-RATED  
DOMESTIC  
POSTAL  
STATIONERY  
ENVELOPE

12 APRIL 1890

Cover,  
commercial mail,  
sent to  
Bremerhaven,  
Germany, arriving  
on 14 April  
(backstamp).  
Two day transit  
time.

2-1/2 Pence..  
Single-weight  
letter-rate for mail  
to Switzerland.



POSTAL STATIONERY  
CARD

6 MAY 1890

UPU Postal Stationery  
Card, commercial  
mail sent to Düsseldorf,  
Germany.

"ZZ" in dater-dial =  
'Late delivery receipt  
at post office'

One Penny ..  
UPU International  
Postcard-Rate.

# HOSTER MACHINE...

# POSTMARK TYPE XIII

\* 16-18 (often under-inked) thin bars descending from right to left and three bars descending from left to right on left-side of dater dial with no postmark die indicators or machine serial number. Double circle dater dial with numerical or letter code at top, with or without star in dial center, and year date between "EC" at bottom.

October 1889 – 12 September 1893

TYPE XIII .. POSTMARK ODDITIES

## MAIL TO GERMANY

21 June 1890

Postal stationery envelope commercial letter mail to Hamburg, Germany, arriving on 28 June (backstamp). Seven day transit time.

**NOTE:**  
Apparent "22" machine serial number in upper-left postmark corner!

**Franking:**  
2-1/2 Pence..  
Single-weight letter-rate for mail to Switzerland.



## DOMESTIC COMMERCIAL MAIL

27 July 1892

Commercial folded-letter mail from London to Coupar Angus, arriving on 28 July. (backstamp).

**NOTE:**  
Hoster Postmark with "bridge" connection at bottom of obliterator!

**Franking:**  
One Pence ..  
Domestic single-weight letter-rate.



# HOSTER MACHINE...

# POSTMARK TYPE XIII

\* 16-18 (often under-inked) thin bars descending from RIGHT TO LEFT and three bars descending from left to right on left-side of dater dial with no postmark die indicators or machine serial number. Double circle dater dial with numerical or letter code at top, with or without star in dial center, and year date between "EC" at bottom.

October 1889 – 12 September 1893

## 1893 END OF HOSTER MACHINE USAGE

By late 1893, Hoster Postmarking Machines in use at London were no longer properly postmarking mail, were in need of overhaul, adjustment and repair.

As evidenced by the late-date examples shown, the postmarks were applied on an angle, were no longer complete or clear, resulting in the Post Office to cease use of them, albeit trials with other potential machines continued.

8 FEBRUARY 1893

Postal stationery card, commercial mail, sent to West London.

Half Penny..  
Domestic  
postcard-rate.



22 FEBRUARY 1893

Cover, sent to Hackney.

One Penny ..  
(Horizontal Pair: Half-Penny)  
Domestic single-weight  
letter-rate.





# HOSTER MACHINE...

## NEWSPAPER BRANCH .. TRIAL

\* 28mm single circle dater dial indicating "NPB" having 4 or 5 stars in dial and have a 14 thick bars descending from left to right and positioned to the right of the dater dial.

17 August 1885 – 8 July 1887

DOMESTIC NEWSPAPER MAIL



### UNDATED WRAPPER

Newspaper wrapper, sent from London to Whitehaven.

"ZZ" Dater Code = 'Late delivery to the post office'.

Only known example.

Half-Penny..  
Domestic printed-matter rate.

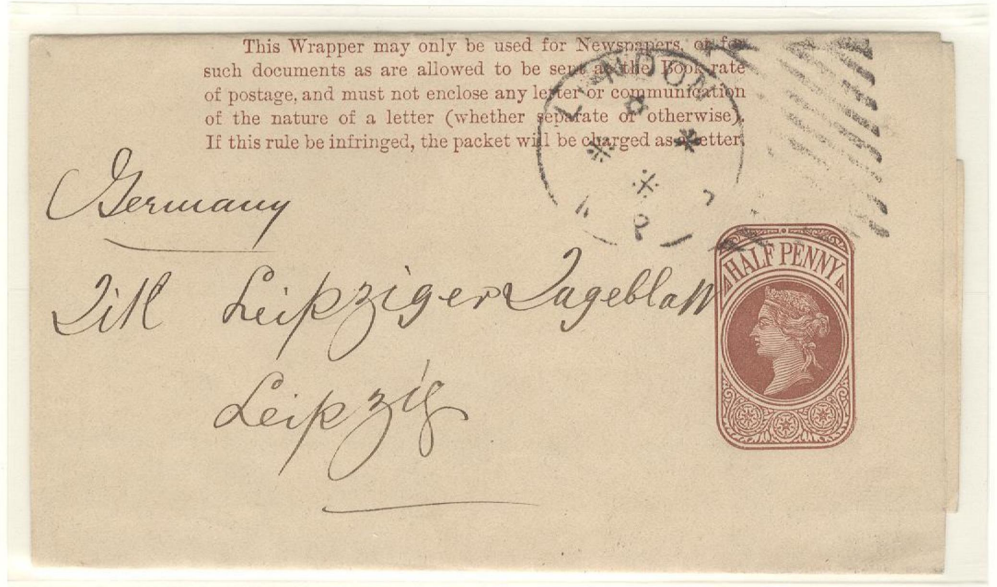
# HOSTER MACHINE...

# NEWSPAPER BRANCH .. TRIAL

\* 28mm single circle dater dial indicating "NPB" having 4 or 5 stars in dial and have a 14 thick bars descending from left to right and positioned to the right of the dater dial.

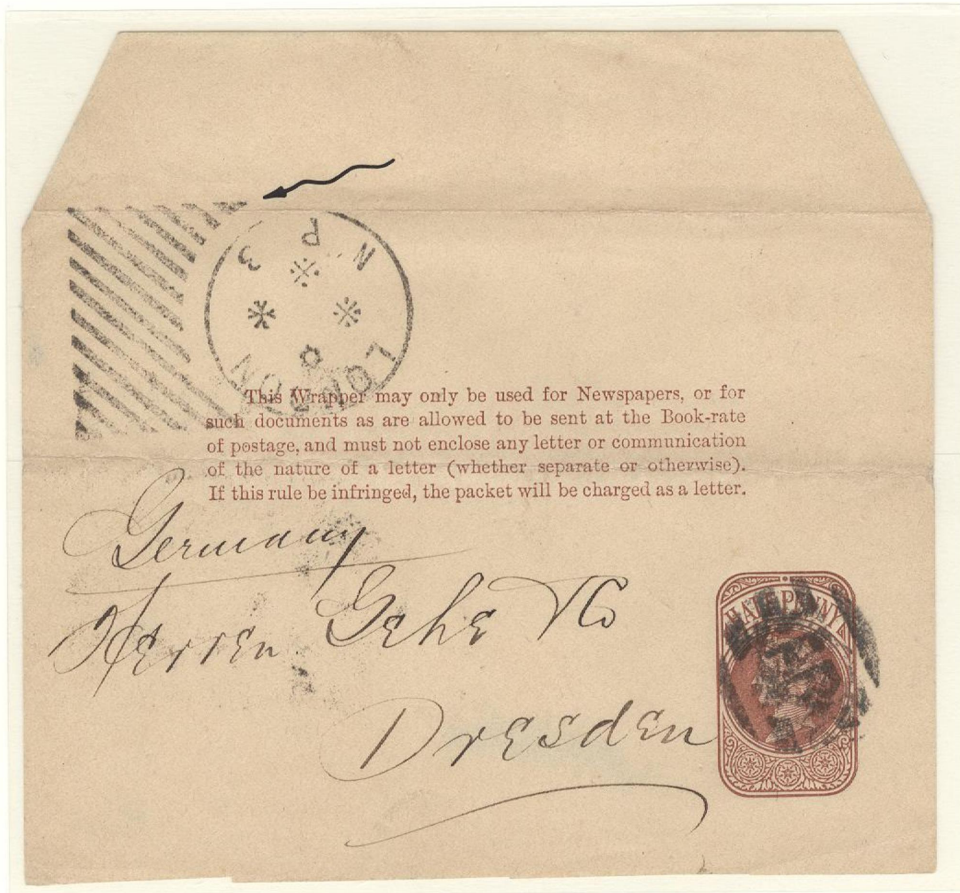
17 August 1885 – 8 July 1887

## NEWSPAPER MAIL TO GERMANY



### UNDATED WRAPPER

Newspaper wrapper, sent from London to Leipzig, Germany



### UNDATED PRE-CANCELLED WRAPPER

Newspaper wrapper, sent from London to Dresden, Germany

Clear postmark over wrapper-fold is verification that wrapper was pre-cancelled.

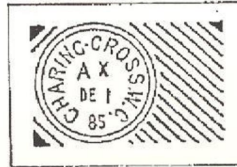
Half-Penny..  
Printed-matter rate to foreign destinations.

# HOSTER MACHINE...

# CHARING CROSS POST OFFICE .. TRIAL

\* 19 heavy bars descending from left to right with no postmark die or machine serial number. 29mm diameter dater dial with Code "AX" at the top.

1 September 1885 – 7 December 1887



MAIL TO FRANCE

1 DECEMBER 1885

Folded letter, sent to Paris, France, arriving on 2 December (backstamp).

2-1/2 Pence..  
Single-weight  
letter-rate  
to France.



MAIL TO INDIA & RE-DIRECTED

30 MARCH 1886

Folded-letter, bank mail sent to a military officer serving in India re-directed upon arrival. 24-day transit time.

Backstamps:

"Sea Post Office, 9 April 1886"  
"Meerkut, 22 April 1886"  
"Chakrata, 23 April 1886"

Five Pence..  
Single-weight letter-rate for mail to India.



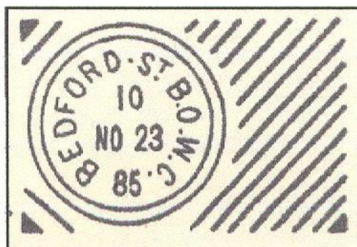
# HOSTER MACHINE...

## BEDFORD STREET .. TRIAL

\* 29 mm double circle dater dial indicating  
"Bedford St. B.O.W.C."  
having a letter code in dial with  
17 thick bars descending from left to right  
.. positioned right of the dater dial.

1885: 24 September, 23 November & 17 December

1886: 13 January, 30 March



13 JANUARY 1886

Cover, mailed at  
Bedford Street Post Office to Darlington.

Arrival Postmark  
(Reverse)  
"Darlington,  
14 January (18) 86"

"Z" Dater Code =  
'Late delivery to the post office'.

One of two 'Z' code examples known.  
One of five dater examples known.

One Penny..  
Domestic single-weight letter rate.

# HOSTER MACHINE...

# DOT MATRIX OBLITERATOR .. TRIAL

\* 30mm double circle dater dial  
having a dot matrix obliterator.

2 February – 21 March 1887

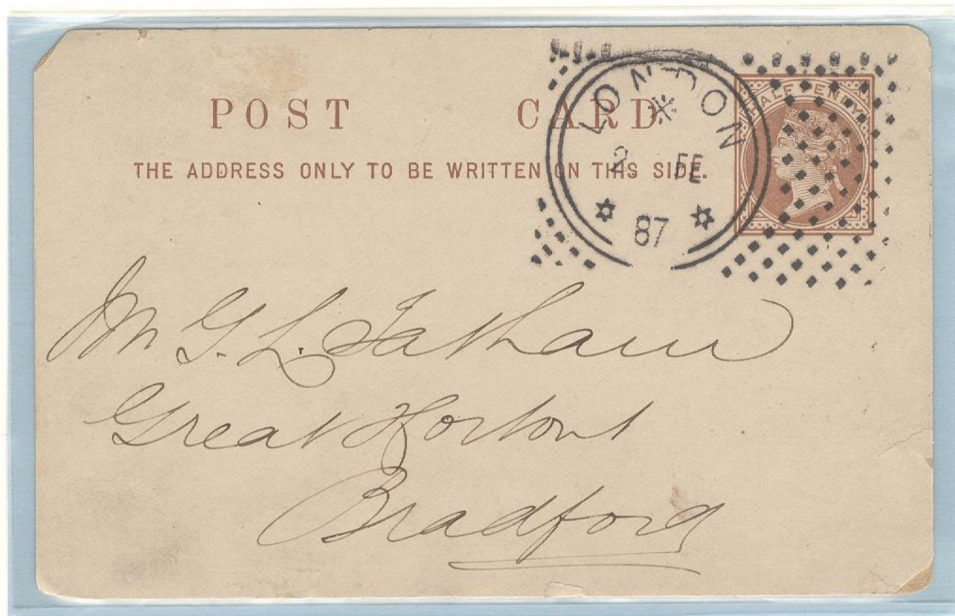


2 FEBRUARY 1887

Domestic postal  
stationery 'clothing  
advertising' mail sent  
from London to  
Bradford.

Half-Penny..  
Domestic  
postcard-rate.

Earliest recorded  
usage.



9 MARCH 1887

Mourning cover,  
sent to Harrogate.

One Penny..  
Domestic single-  
weight letter-rate.



# HOSTER MACHINE...

# SERVICE MARKINGS .. TYPE I

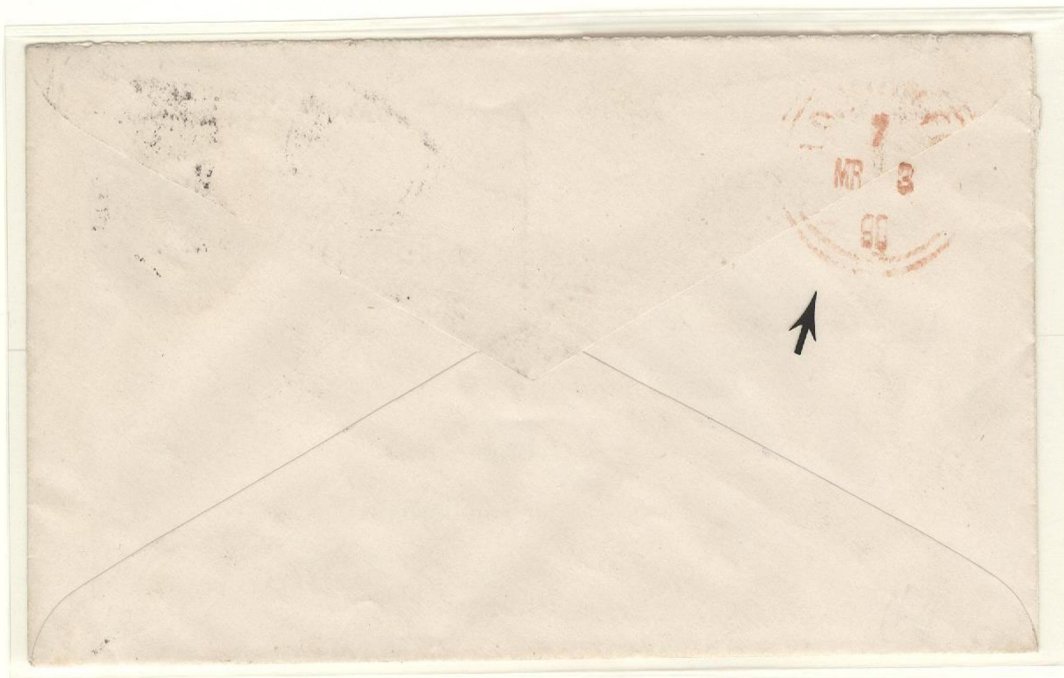
\* 29mm double circle dater dial indicating "London E.C." at top, with or without stars in dial and with year date at bottom. Orange-red postmark ink color.

1886 - 1890

15 MAY 1886

Arrival marking on reverse of London local city mail.

Earliest known Hoster Service Postmark.



3 MARCH 1890

Arrival postmark on inbound bank mail from Kirkoaldy.

# HOSTER MACHINE...

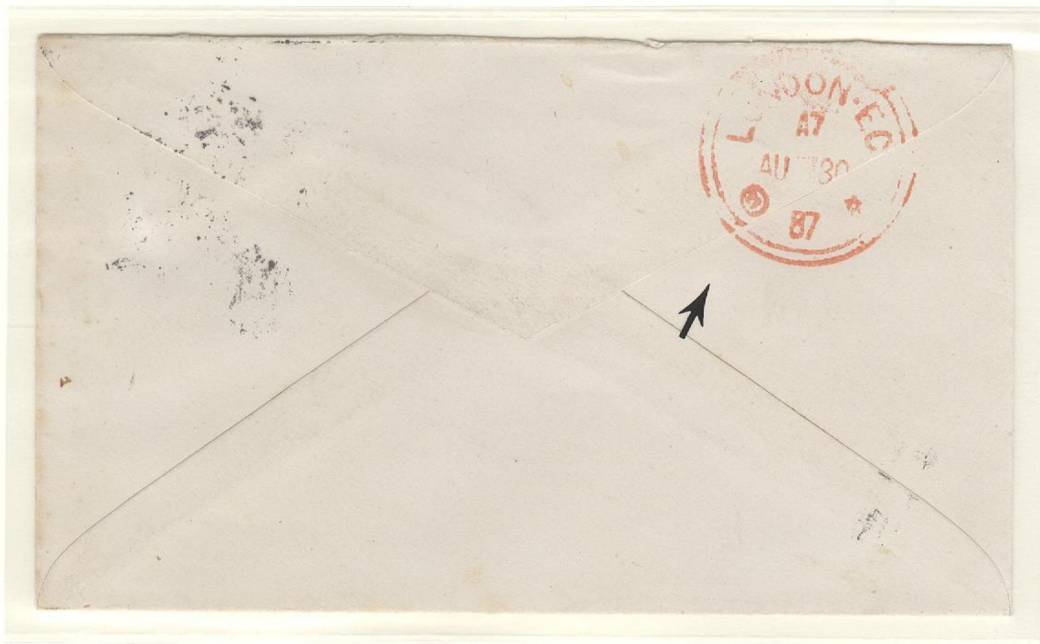
## SERVICE MARKINGS .. TYPE II

\* 30mm double circle dater dial indicating "London E.C." at top, with or without a star in dial center and with indication of machine serial number '29' at lower-left in dial. Orange-red postmark ink color.

1987 - 1891

30 AUGUST 1887

Arrival postmark on reverse of Inbound commercial mail from Liverpool.



13 JANUARY 1891

Arrival postmark on reverse of inbound postal stationery card commercial mail from Bolton.

# ETHRIDGE MACHINE...

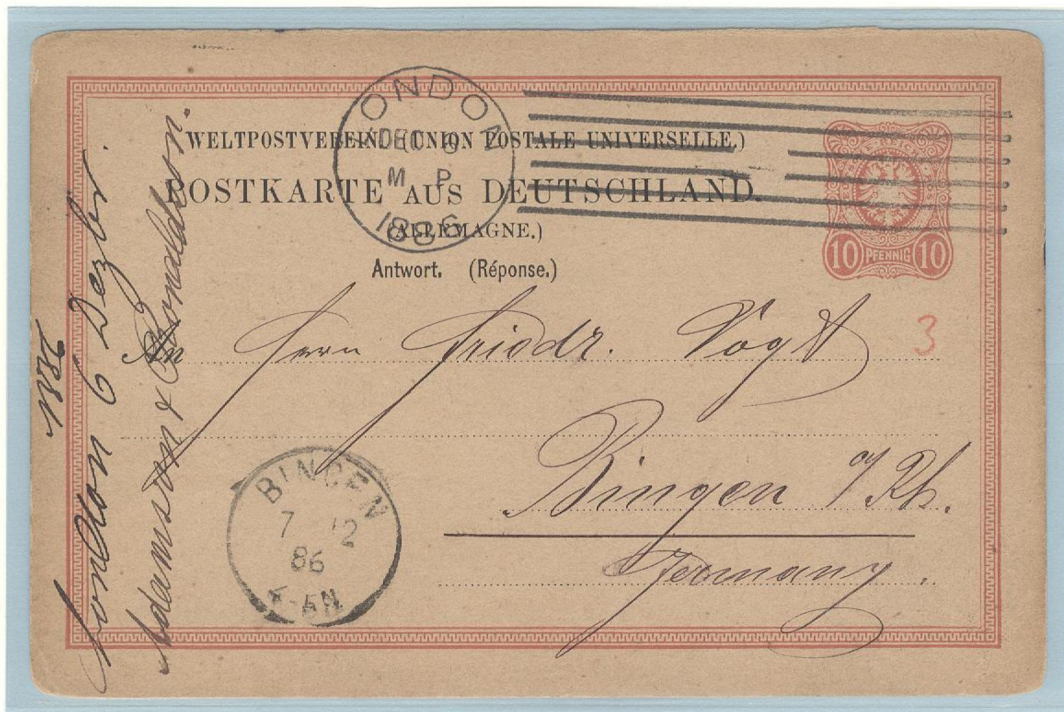
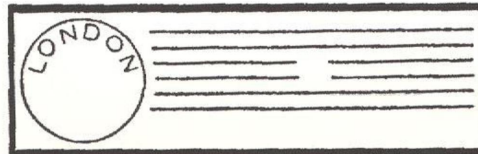
# POSTMARK

\* 25mm diameter date-dial with an obliterator having six horizontal lines; middle space opening intended for machine number.

September 1886 – 20 April 1887

Based on a design-patent held by Martin V.B. Ethridge, the 'American Postal Machine Company' of Boston, Massachusetts, furnished the London General Post Office a **STEAM-POWERED** postmarking machine for testing. Since it effectively postmarked only 90 letters a minute, not an expected 300 units, the machine was rejected having demonstrated **NO ADVANTAGE COMPARED WITH THE HOSLER MACHINES CONCURRENTLY BEING TESTED.**

**THE SO-CALLED 'ETHRIDGE MACHINE'**  
(in North America known as the 'American Machine')  
**WAS THE FIRST POSTMARKING MACHINE TO APPLY AN OBLITERATOR HAVING SIX HORIZONTAL LINES.**



## GERMAN UPU POSTAL REPLY STATIONERY CARD

6 DECEMBER 1886

Business reply-card mail from Bolton, England, to Bingen, Germany, with (red-ink back-stamp) London 'Hooded Transit Postmark' (reverse) dated 6 December and arrival postmark "Bingen" (front) "7 December".

Only known example of this usage type.



# ETHRIDGE MACHINE...

# POSTMARK

\* 25mm diameter dater-dial with an obliterator having six horizontal lines; middle space opening intended for machine number.

September 1886 – 20 April 1887

DOMESTIC COMMERCIAL MAIL

23 OCTOBER 1886

Cover, commercial mail, sent to Burton, arriving on 24 October (backstamp).



14 MARCH 1887

Folded-letter, commercial mail, sent to Wells, arriving on 15 March (backstamp).

One Penny ..  
Domestic single-weight letter-rate.

# MALIN MACHINE...

# INTERMITTENT TRIALS

30 September 1890 – 12 February 1891

Intermittently during a six-month period in 1890-1891,  
a so-called "Malin Machine" was tried by the General Post Office.

Little has been found in the British Postal Archives regarding the  
machine trial, or the machine itself, other than the machine  
had been rejected since it could only postmark a maximum  
100 units of mail/minute.

**THE MACHINE APPARENTLY ONLY POSTMARKED OUT-BOUND MAIL TO  
FOREIGN DESTINATIONS.**



## POSTAL STATIONERY CARD TO HOLLAND

30 JANUARY 1891

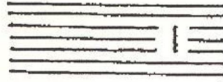
Postal card sent from London to Zierikzee, Holland,  
arriving on 31 January.  
One-day transit time.

**One Penny..**  
**UPU International Postcard-Rate.**

**One of four known examples.**

25 August – 14 September 1893

In August 1893, G.W. Hey & M.J. Dolphin, founders of the  
 'International Postal Supply Company' of New York,  
 furnished the London General Post Office an  
**ELECTRICALLY-OPERATED MACHINE**  
 for testing, subsequently  
**REJECTED BECAUSE OF ITS HIGH RENTAL COST.**



22.5mm single-circle dater-dial with  
 seven-line (52mm in length) obliterator  
 having numerical '1' at right-side of the  
 marking.

FOREIGN DESTINATION MAIL



COMMERCIAL MAIL TO GERMANY

14 SEPTEMBER 1893

Commercial printed-matter to Mannheim, Germany,  
 in a flat-rate postal stationery cover.

**Half-Penny ...**  
**Printed-matter rate to Germany**

**Latest trial usage date &**  
**only known last-day usage example.**

# INTERNATIONAL MACHINE...

FIRST TRIAL

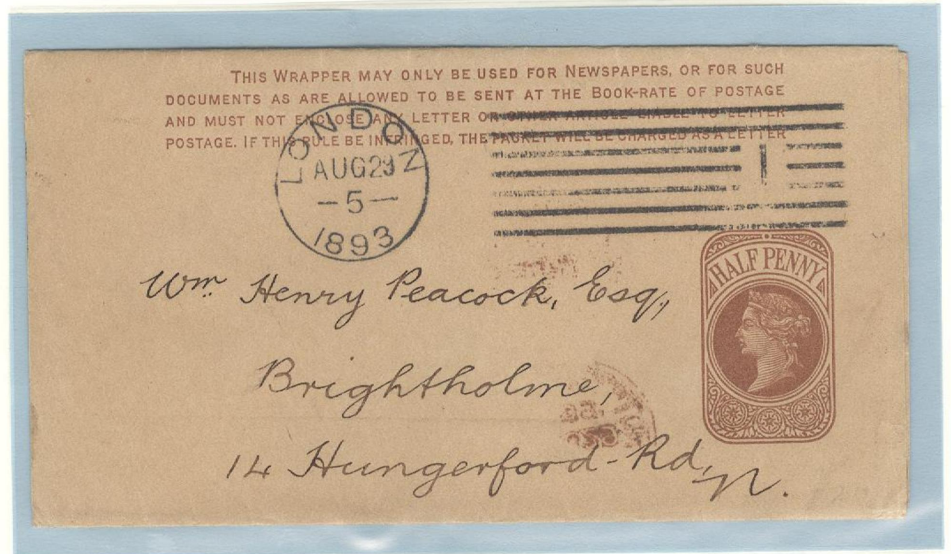
25 August – 14 September 1893

DOMESTIC MAIL

## NEWSPAPER WRAPPER USAGE

29 AUGUST 1893

Newspaper mail,  
sent to Brightholme.



## POSTAL STATIONERY CARD USAGE

8 SEPTEMBER 1893

Commercial mail  
(printed price  
reduction notification)  
sent to  
Grantham, Lincolnshire.

Half-Penny ...  
Domestic printed-matter rate.

G P O  
SS 281

In July 1896, the 'Imperial Mail Marking Machine Company of Canada' offered the London General Post Office their "Imperial" Machine for evaluation. Similar machines had already been in field use in Canada in 1896.

The British Post Office would evaluate the machine in 1897 along with a postmarking die similar to one in use in Canada for the Queen's Jubilee Year (1897).

No mail was processed during the machine's evaluation, but only trial proofs are known.

**THE IMPERIAL MACHINE WAS NOT ACCEPTED BY THE LONDON GENERAL POST OFFICE BECAUSE A MUCH MORE EFFECTIVE MACHINE ('BICKERDIKE') HAD BEEN SUCCESSFULLY TESTED CONCURRENTLY.**



**PROOF EXAMPLES**

Postmark examples in violet ink on 'General Post Office' un-watermarked file paper.

One of two known examples.

# EMPIRE MACHINE ...

15, 17, 18, & 21 March 1898

**Martin V.B. Ethridge, previously affiliated with the 'American Postal Machine Company' and the 'Ethridge Machine' Trial of 1886-1887, now affiliated with the 'Empire Canceling Machine Company' of the United States of America, attempted to sell his 'Empire Machine' to the London General Post Office in 1898.**

**TRIAL OF THE 'EMPIRE MACHINE' WAS CONDUCTED ON FOUR DAYS IN MARCH 1898 AND FOR ONLY ONE HOUR EACH DAY WITH ONLY 3200 MAIL UNITS!**

The 'Empire Machine' looked and functioned similar to the 'Bickerdike Machine', concurrently being tested, with the former less performance effective and subsequently rejected.



**21 MARCH 1898**

**Clip from domestic single-weight letter mail.**

**Last day of trial.**

**One of five known trial postmark examples.**

# BOSTON MACHINE...

## FIRST TRIAL

### POSTMARK...

\* 20mm diameter dater-dial with seven wavy-line obliterator having "1" in the center.

27 August – 30 September 1898

Soon after the Bickerdike Machine's first trial completion in November 1897, a disagreement on the purchase terms arose between the General Post Office at London and the 'Canadian Postal Supply Company'.

That impasse, albeit short-lived, enabled the 'American Postal Machine Company' of Boston, Massachusetts, to submit their 'Boston Machine' for testing.



31 AUGUST 1898

Postal stationery card, commercial mail,  
sent to Central London.

Half-Penny ..  
Domestic postcard-rate.

Two of twelve postmark examples known.

# BOSTON MACHINE...

# SECOND TRIAL

## POSTMARK...

\* 22mm diameter dater-dial having 'four digit' year date and with a four-line (Machines '2' or '3') or six-line (Machines '1', '4', '5', & '6') obliterator contoured with the dater dial and having a machine number in center of obliterator.

1899 - 1900

Despite the initial 'Bickerdike' Machine Trial being successful,  
**THE GENERAL POST OFFICE**  
DECIDED TO EXTEND TESTING OF BOTH THE 'BOSTON' AND 'BICKERDIKE'  
MACHINES BY LEASING SIX UNITS OF EACH  
FOR AN INITIAL TWELVE MONTH PERIOD.

MACHINE '1'

26 JUNE 1899

Domestic cover,  
sent to  
Hinckley.



MACHINE '6'

22 SEPTEMBER 1899

Local London  
commercial letter  
mail from  
"Spiers & Bond Ltd"  
with postage  
having Perfin  
"S&B".

One-Penny ..  
Domestic Single-weight letter-rate.



# BOSTON MACHINE...

# SECOND TRIAL

## POSTMARK...

\* 22mm diameter dater-dial having 'four digit' year date & four line obliterator with machine number in center of obliterator.

1899 - 1900  
MACHINE '3'

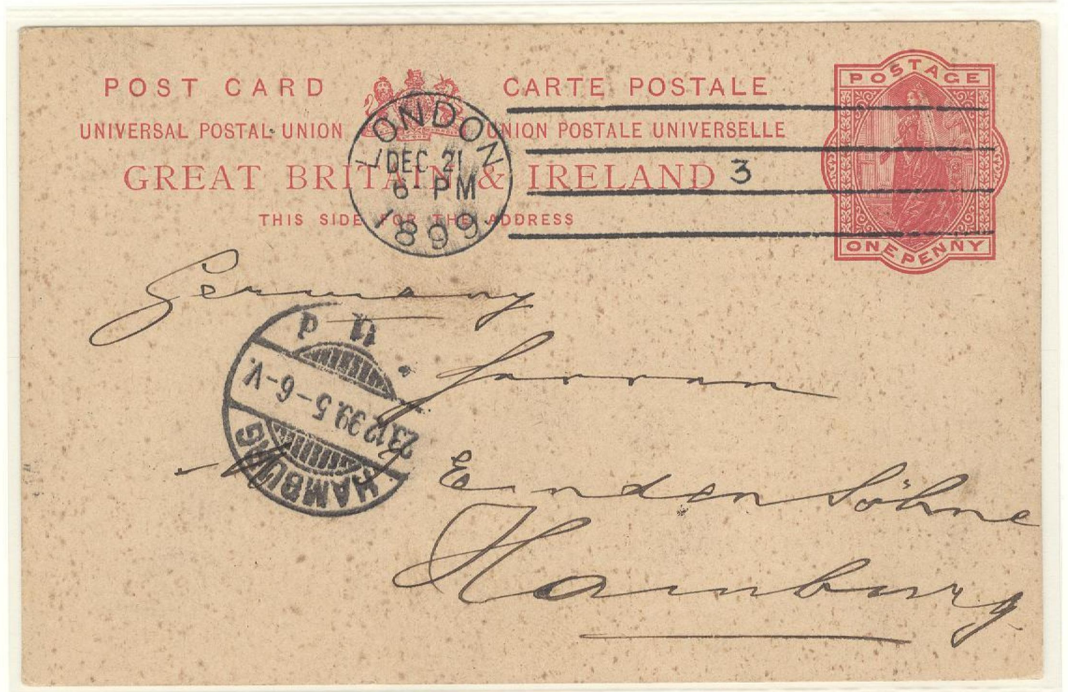
## UPU STATIONERY CARD MAIL TO GERMANY

MACHINE '3'

21 DECEMBER 1899

Commercial mail,  
sent to Hamburg.

UPU Postal  
Stationery Card:  
139 x 88mm



MACHINE '3'

8 NOVEMBER 1899

Commercial mail,  
sent to Berlin.

UPU Postal  
Stationery Card:  
130 x 82mm



One Penny..  
UPU International Postcard-Rate

# BOSTON MACHINE...

# SECOND TRIAL

## POSTMARK...

\* 22mm diameter dater-dial having 'four digit' year date and with a four-line (Machines '2' or '3') OR six-line (Machines '1', '4', '5', & '6') obliterator contoured with the dater dial and having a machine number in center of obliterator.

1899 - 1900

POSTMARK CLIPS FROM 'MACHINES 1 THRU 6'



# BOSTON MACHINE...

# FIELD USAGE

## POSTMARK...

\* 22mm diameter dater-dial having 'two digit' year date with a four-line (Machines '2' or '3') OR six-line (Machines '1', '4', '5', & '6') obliterator contoured with the dater dial & a machine number in center of obliterator.

1900 - 1904

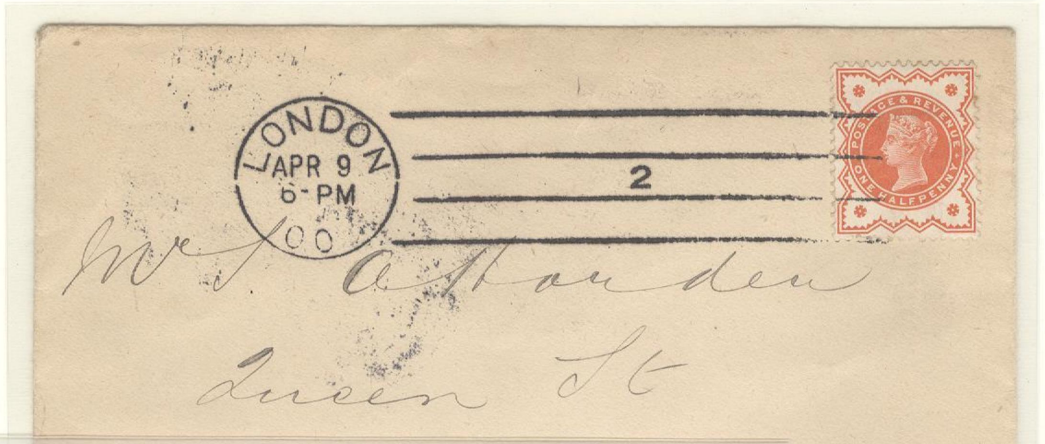
In early 1900,  
**THE GENERAL POST OFFICE DECIDED TO PURCHASE THE HERETOFORE LEASED 'BOSTON' MACHINES (EIGHT MACHINES) FOR FIELD OPERATION.**

The dater dials used had two-digit year dates with horizontal obliterators having machine numbers in the center.

MACHINE '2'

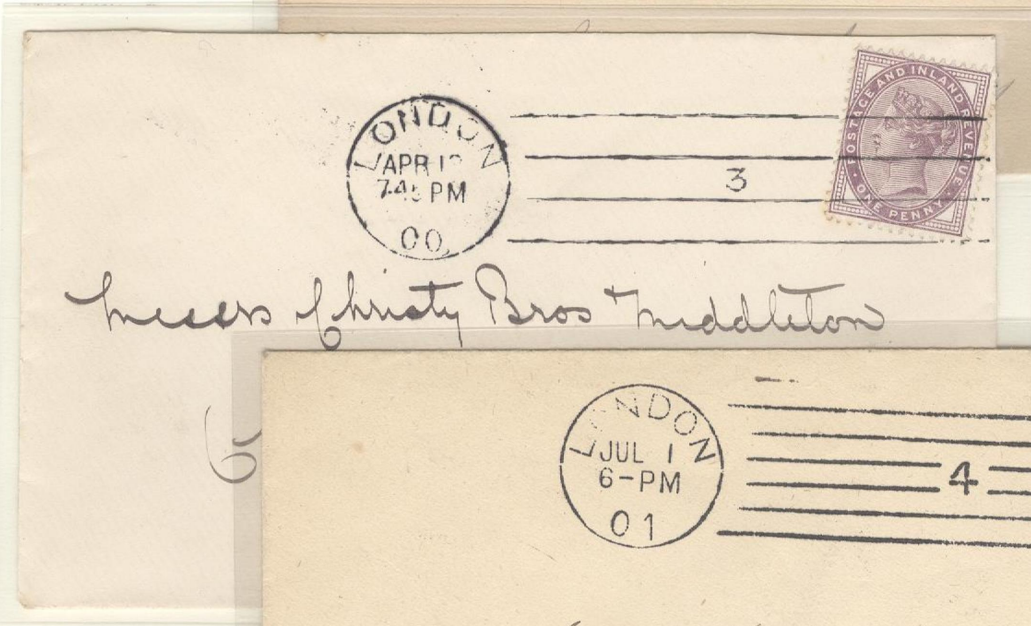
9 APRIL 1900

Cover,  
 printed-matter  
 enclosure,  
 sent to  
 Salisbury



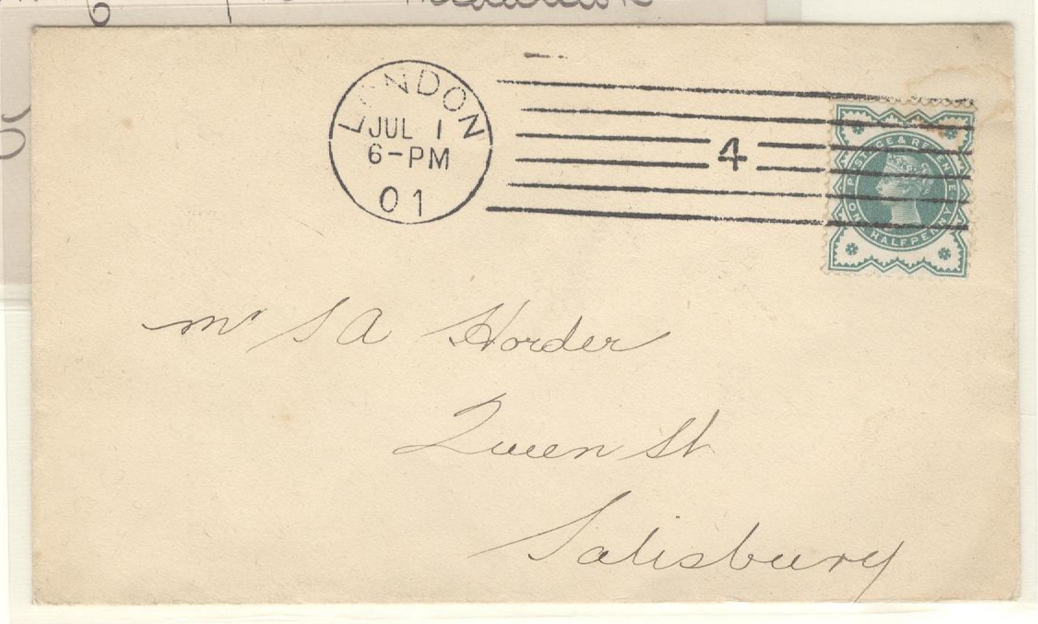
MACHINE '3'

12 APRIL 1900



Machine '4'

Cover,  
 printed-matter  
 enclosure,  
 sent to  
 Salisbury



One-Penny ..  
 Domestic single-weight letter-rate

Half-Penny ..  
 Domestic printed-matter rate

# BICKERDIKE MACHINE...

FIRST TRIAL .. LONDON

4 October – 26 November 1897

In March 1897, an agent for the 'Canadian Postal Supply Company' of Montreal, Canada, offered the London General Post Office their electrically-operated 'Bickerdike' Postmarking Machine.

**IN SEPTEMBER 1897, FOUR MACHINES WERE DELIVERED TO THE POST OFFICE AT LONDON WHICH COMMENCED TRIALS WITH TWO OF THE FOUR MACHINES FOR A PERIOD OF THREE MONTHS.**

Two postmark varieties were used during the trial:  
"VR" with and without serif to distinguish between the two machines.



WITHOUT SERIF ON 'VR'

5 October – 25 November 1897



WITH SERIF ON 'VR'

4 October – 26 November 1897

6 OCTOBER 1897

Matching pair of postmarks  
from the early trial.

# BICKERDIKE MACHINE...

FIRST TRIAL .. LONDON

4 October – 26 November 1897

POSTAGE DUE MAIL TO SWITZERLAND



WITH SERIF ON 'VR'

6 OCTOBER 1897

Commercial un-franked mail, to Winterthur, Switzerland, arriving on 7 October (backstamp), resulting in postage due with penalty payable by addressee upon delivery.

50 Centimes postage due covering missing postage =  
2-1/2 Pence single-weight letter-rate to Switzerland +  
penalty = 2-1/2 + 2-1/2 Pence = 50 Centimes.

Only known overseas mail usage from early trial.

**BICKERDIKE MACHINE...**

**FIRST TRIAL .. LONDON**

**4 October – 26 November 1897**

**POSTAL STATIONERY  
COMMERCIAL DOMESTIC MAIL**

**WITHOUT SERIF ON "VR"**

**22 OCTOBER 1897**

**Cover,  
bank mail from  
"Barclay & Sons  
Limited"  
sent to  
East London.**



**WITH SERIF ON 'VR'**

**24 NOVEMBER 1897**

**Cover, bank mail  
from  
"The London Joint  
Stock Bank"  
sent to Putney.**

**One Penny ..  
Domestic single-weight letter-rate**

# BICKERDIKE MACHINE...

# SECOND TRIAL .. LONDON

## POSTMARK...

\* 22mm diameter dater-dial with "1899" in full at the bottom with a seven -line obliterator illustrating a 'Victorian Crown' between "VR" along with machine number (1 thru 6) indicated below crown.

1899 - 1900  
MACHINE '1'

Despite the initial 'Boston' Machine Trial having been determined 'acceptable',  
**THE LONDON GENERAL POST OFFICE DECIDED TO EXTEND TRIALS OF BOTH THE 'BICKERDIKE' & 'BOSTON' MACHINES BY LEASING SIX UNITS OF EACH**  
for an initial twelve month continuing trial period.

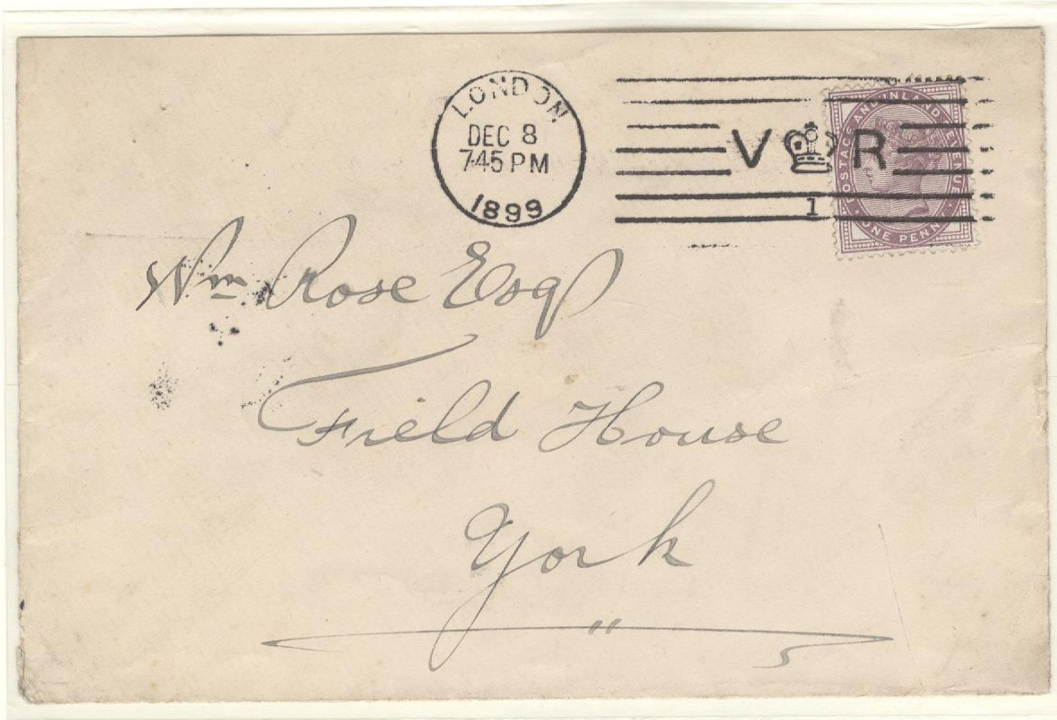
TYPE I  
LARGE TYPE - SIZE  
"LONDON" & "1899"

COMMERCIAL MAIL TO  
GERMANY

12 OCTOBER 1899

Post card, commercial  
mail, sent to Arnstadt,  
Province Thuringia,  
Germany

One-Penny...  
UPU International  
Postcard-Rate



TYPE II  
SMALL TYPE-SIZE  
"LONDON" & "1899"

DOMESTIC  
COMMERCIAL MAIL

8 DECEMBER 1899

Cover,  
sent to York.

One-Penny ..  
Domestic single-  
weight letter-rate.

# BICKERDIKE MACHINE...

# SECOND TRIAL .. LONDON

## POSTMARK...

\* 22mm diameter dater-dial with "1899" in full at the bottom with a seven -line obliterator illustrating a 'Victorian Crown' between "VR" along with machine number (1 thru 6) indicated below crown.

1899 - 1900  
MACHINE '3'

TYPE I  
LARGE TYPE-SIZE  
"LONDON" & "1899"

PRINTED-MATTER MAIL  
TO GERMANY

2 MAY 1899

Postal stationery cover,  
sent to Leipzig, Saxony,  
Germany

One-Penny...  
International printed-  
matter rate.



TYPE I  
LARGE TYPE-SIZE  
"LONDON" & "1899"

DOMESTIC  
LETTER MAIL

4 NOVEMBER 1899

Misregistration of  
postmark resulting in  
hand-cancellation of  
postage.

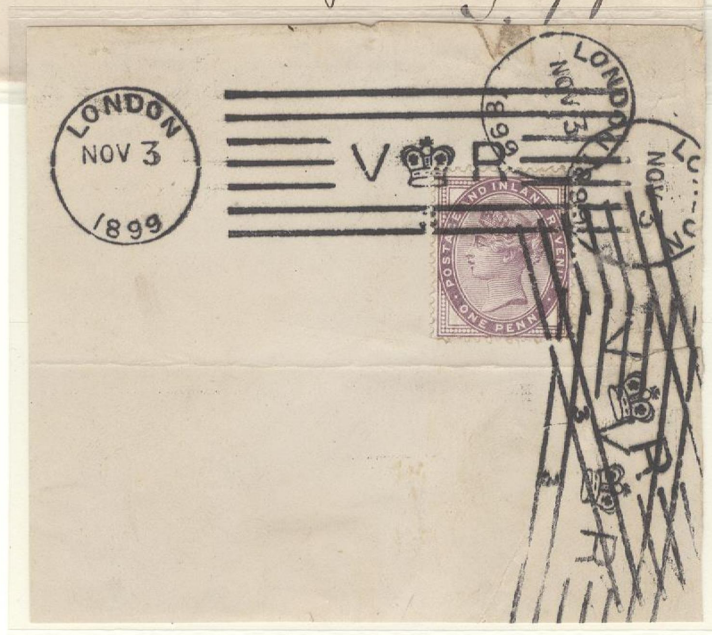
One-Penny..  
Domestic single-  
weight letter-rate



TYPE II  
SMALL TYPE-SIZE  
"LONDON" & "1899"

3 NOVEMBER 1899

Dater-dial without  
indication of time.  
Triple-pass through the  
machine may have  
been a special test.





# BICKERDIKE MACHINE...

# SECOND TRIAL .. LONDON

## POSTMARK...

\* 22mm diameter dater-dial with "1899" in full at the bottom with a seven -line obliterator illustrating a 'Victorian Crown' between "VR" along with machine number (1 thru 6) indicated below crown.

1899 - 1900  
MACHINES '2' & '6'  
MIXED TYPE-SIZE FOR "LONDON" & "1899" IN DATER DIALS

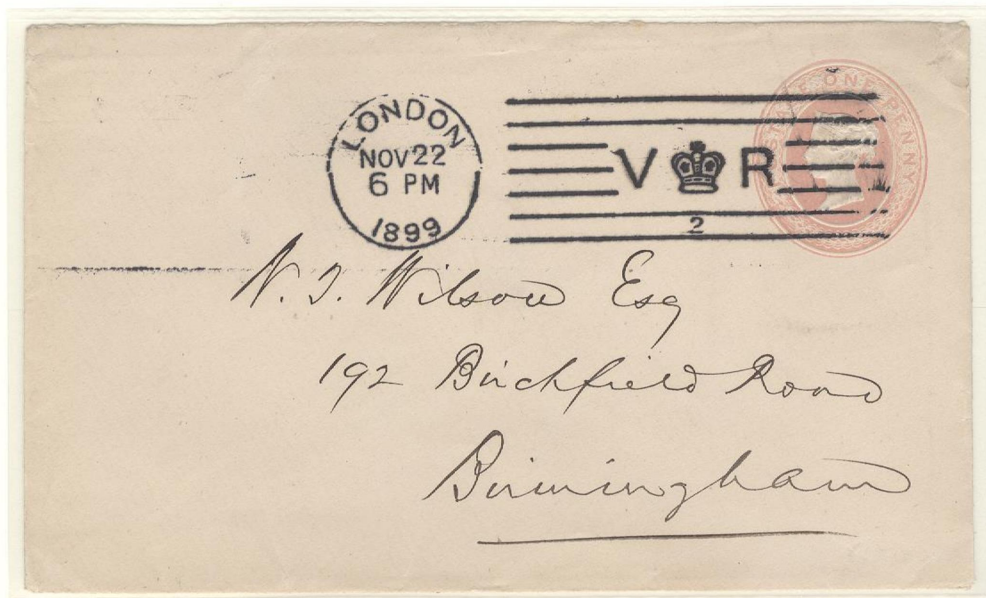
### MACHINE '2'

LARGE TYPE -SIZE  
"LONDON" &  
SMALL TYPE-SIZE  
"1899"

DOMESTIC POSTAL  
STATIONERY USAGE

22 NOVEMBER 1899

Cover,  
sent to Birmingham.



### MACHINE '6'

SMALL TYPE -SIZE  
"LONDON"  
& WIDELY-  
POSITIONED  
LARGE-TYPE SIZE  
"1899"

DOMESTIC LETTER  
MAIL

20 MAY 1899

Cover,  
sent to  
Manchester.



One-Penny..  
Domestic single-weight letter-rate

# BICKERDIKE MACHINE...

# SECOND TRIAL .. LONDON

## POSTMARK...

\* 22mm diameter dater-dial with two-digit year date at the bottom with a seven-line obliterator illustrating a 'Victorian Crown' between "VR" along with machine number ('1' or '2') indicated below crown.

1899 - 1900  
MACHINES '4' & '5'

**MACHINE '4'**

SMALL TYPE-SIZE  
"LONDON" &  
LARGE TYPE-SIZE  
"1899"

12 AUGUST 1899

Bank notification  
mail, sent to Hyth.



**MACHINE '5'**

LARGE TYPE-SIZE  
"LONDON" &  
"1899"

12 JUNE 1899

Newspaper  
notification card,  
sent to Leeds.

Half-Penny..  
Domestic postcard-rate.

# BICKERDIKE MACHINE...

# SECOND TRIAL .. LONDON

## POSTMARK...

\* 22mm diameter dater-dial with "1899" in full at the bottom with a seven - line obliterator illustrating a 'Victorian Crown' between "VR" along with machine number (1 thru 6) indicated below crown.

1899 - 1900  
MACHINES '2' & '5'  
FOREIGN DESTINATION MAIL

### MACHINE '2'

LARGE TYPE-SIZE  
"LONDON" &  
STRAIGHT-LINE  
"00" YEAR DATE

MAIL TO CANADA

20 JANUARY (19)00

Cover,  
sent to Montreal,  
Quebec, Canada,  
arriving on 5 February  
('Bickerdike' Machine  
backstamp).

Two Pence..  
Single-weight letter-rate  
to Canada.



### MACHINE 5

LARGE TYPE-SIZE  
"LONDON" & "1899"

MAIL TO GERMANY

13 SEPTEMBER 1899

Cover, sent to  
Mannheim,  
Germany, arriving  
on  
14 September 1899  
(backstamp).

Cover improperly  
"faced" for feed into  
the postmarking  
machine, resulting  
in the sideways-  
postmark.

2-1/2 Pence...  
Single-weight  
letter-rate to  
Germany.



# BICKERDIKE MACHINE...

# SECOND TRIAL .. LONDON

## POSTMARK...

\* 22mm diameter dater-dial with  
"1899" in full at the bottom with a seven -line  
obliterator illustrating a 'Victorian Crown'  
between "VR" along with machine number  
(1 thru 6) indicated below crown.

1899 - 1900  
MACHINE '5'

POSTMARK DATER-DIAL WITHOUT INDICATION OF TIME



LARGE TYPE-SIZE  
"LONDON" & "1899"

DOMESTIC MAIL

26 JULY 1899

Cover, local-city mail

Postmark without indication of time.

One-Penny..  
Domestic single-weight letter-rate.

# BICKERDIKE MACHINE...

# LIVERPOOL TRIAL & USAGE

## POSTMARK...

\* 22mm diameter dater-dial with  
with two-digit year at the bottom with a seven -line  
obliterator illustrating a 'Victorian Crown'  
between "VR" along with machine number  
( '1' or '2' ) indicated below crown.

1900 - 1901  
MACHINES '1' & '2'

During the first (1899-1900) trials at London,  
**THE GENERAL POST OFFICE DECIDED TO EXPAND TRIALS TO LIVERPOOL**  
Resulting in two additional machines being leased.

### MACHINE '1'

UPU POSTAL  
STATIONERY CARD  
TO GERMANY

24 DECEMBER  
(19)00

Commercial mail,  
sent to Hamburg,  
arriving on  
26 December.

One-Penny...  
UPU International  
Postcard-Rate



### MACHINE '2'

DOMESTIC  
PRINTED-MATTER  
MAIL

18 JUNE (19)01

Cover,  
commercial  
printed-matter,  
sent to Hull.

Half-Penny ..  
Domestic  
printed-matter  
rate.



# BICKERDIKE MACHINE...

# FIELD USAGE

## POSTMARK...

\* 22mm diameter dater-dial with two-digit year date at bottom with a seven-line obliterator illustrating a 'Victorian Crown' between "VR" along with machine number (1 thru 6) indicated below crown.

1900-1901

**IN MAY 1900, THE LONDON GENERAL POST OFFICE DECIDED THAT THE HERETOFORE EIGHT 'BICKERDIKE' MACHINES ON TRIAL & LEASED WOULD BE PURCHASED AND WOULD REMAIN IN FIELD USE.**

**With the advent of the Twentieth Century, the dater dials were altered to now indicate the year with two digits instead of the heretofore four.**

Machine '1'

31 JANUARY (19)01

Postal stationery cover,  
commercial mail,  
sent to Colne.



MACHINE '2'

28 NOVEMBER 1900

Re-directed mail  
from York to  
St. Leonards-on-Sea,  
arriving on  
30 November  
(backstamp).

Misregistration of the  
machine postmark  
resulted in a pen  
cancel with  
subsequent dated  
hand-cancel at  
"Campden" with an  
unusual  
"28 - 29" date for  
redirection.



**One-Penny ..  
Domestic single-weight letter-rate.**

# BICKERDIKE MACHINE...

## FIELD USAGE

### POSTMARK...

- \* 22mm diameter dater-dial with two-digit year date at bottom with a seven-line obliterator illustrating a 'Victorian Crown' between "VR" along with machine number (1 thru 6) indicated below crown.

1900-1901

Machine '4'

1 MAY (19)01

Cover, reply mail,  
sent to  
"London & North Western  
Railway"  
at Swansea



LONDON & NORTH WESTERN RAILWAY.

Swansea



MACHINE '5'

14 MARCH (19)00

Cover,  
sent to  
Glasgow, Scotland.

MACHINE '6'

17 MAY (19)00

Cover,  
general delivery mail,  
sent to  
Llandudno, Wales.



One-Penny ..  
Domestic single-weight letter-rate.

# END OF AN ERA...

## DEMISE OF QUEEN VICTORIA

1819 - 1901

The demise of Queen Victoria on 22 January 1901 ended a reign of over 64 years for Britain & Commonwealth as well as an end to "Victorian Era Philately".

1 FEBRUARY 1901

'German Post Office at Shanghai' - postmarked mourning card sent to Alsfeld, Germany, arriving on 7 March 1901. 33-day transit time.



23 FEBRUARY 1901  
(Bickerdike Origin Postmark)

Canadian mourning cover  
"Canada Mourns Her Beloved Queen .. 1837-1901"  
from Toronto, sent to Picton, Ontario, Canada.



# EPILOGUE ...

## KING EDWARD

JUNE-AUGUST 1901  
OBLITERATOR VARIETY .. "ER" WITH 'VICTORIAN CROWN'

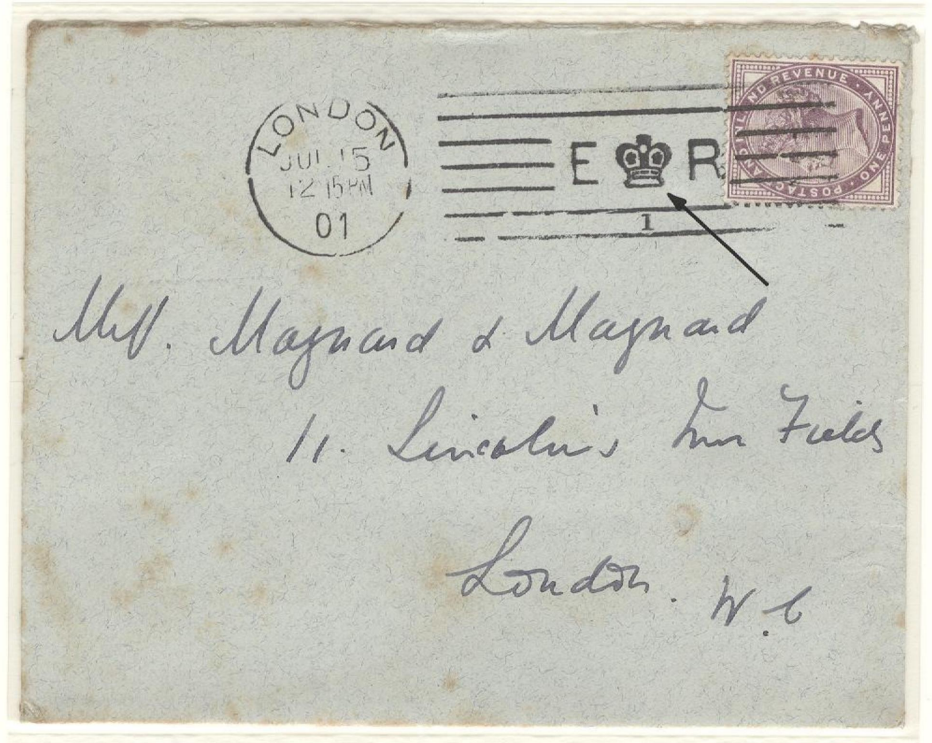
Upon the demise of Queen Victoria on 22 January 1901, her son, Edward, became king, resulting in the General Post Office altering the heretofore 'Bickerdike' Machine obliterators from "VR" to "ER" by mid-1901, albeit **THE 'VICTORIAN CROWN' REMAINED IN THE OBLITERATOR UNTIL IT WAS FINALLY ALTERED IN SEPTEMBER 1901.**

MACHINE '1'

15 JULY 1901

Cover,  
sent to London

One Penny ..  
Domestic  
single-weight  
letter-rate.



MACHINE '3'

4 JULY 1901

Postal stationery cover,  
commercial mail,  
sent to Birmingham.

Half-Penny ..  
Domestic  
printed-matter rate.



# BICKERDIKE MACHINE...

# LIVERPOOL TRIAL & USAGE

## POSTMARK...

\* 22mm diameter dater-dial with  
with two-digit year at the bottom with a seven -line  
obliterator illustrating a 'Victorian Crown'  
between "ER" along with machine number  
( '1' or '2' ) indicated below crown.

KING EDWARD  
OBLITERATOR VARIETY .. "ER" WITH VICTORIAN CROWN  
MACHINES '1' & '2'

Upon the demise of Queen Victoria on 22 January 1901, by mid-year,  
OBLITERATORS OF THE 'LIVERPOOL BICKERDIKE' TRIAL MACHINES WERE ALSO ALTERED  
FROM 'VR' TO 'ER', ALBEIT MAINTAINING THE FORMER CROWN DESIGN  
FOR AN UNDETERMINED PERIOD IN 1901-1902.

MACHINE '2'  
COMMERCIAL  
LETTER MAIL  
2 JANUARY  
(19)02  
Cover,  
commercial mail,  
sent locally in London  
One-Penny...  
Domestic letter-rate



MACHINE '2'

DOMESTIC  
PRINTED-MATTER  
MAIL

24 FEBRUARY (19)02

Postal stationery card,  
commercial  
printed-matter,  
sent to  
Manchester

Half-Penny ..  
Domestic  
printed-matter rate

Incomplete "E" of  
'ER' in obliterator  
result of broken type

