

## **ADDENDUM**

Note that the addresses in the following article are out of date, as of this addition of May 15, 2016.

First of all, please do not use Bart Billings' address for any communications.

In addition, the Secretary of the Machine Cancel Society's address has changed to:

Gary Carlson  
1261 Ducrest Dr S  
Columbus, OH 43220-3813

Please direct all publications questions to Mr. Carlson.

The main website for the MCS is:

<http://machinecancel.org>

## U S Postal Machines of the ARMY POST OFFICES (WW II)

### ADDENDUM 1

Bart Billings

Since release of the APO book last October, reports of new finds and date extensions have been rolling in. I want to pass these on to you, but deciding on a format has not been as easy as one might expect.

Anyway, I decided to stick with the format used in the book, and tabulate the reports received from each individual without trying to list them in sequence. An index will be found at the end of the report to identify the APOs, and the page in this report they can be found.

#### Report from: Russ Carter

First, Russ reports, "I noticed that in Volume 1, last page (118) you list 570 and 708 as being unreported but you show them in Volume 2."

#### APO 338 History & Markings

Machine Mfg	Ret Addr	#/RA	Location	Value	# /PM	PM-die	Xcler-die	Year	mmdd
UN Model K	Sq E-1 APO 19623			ES	338	USAPS	200	1945	1110

The return address appears to be a 'temporary' one, but the APO number 338 in the dial die is quite clear. Still, there is a mystery here, because reference 1 lists APO 338 as never operational. Only this one specimen is known at this time.



#### APO 349 History & Markings

Machine Mfg	Ret Addr	#/RA	Location	Value	# /PM	PM-die	Xcler-die	Year	mmdd
UN Model K	4182 US Army Plant	349	Newport, Wales	VS	349	USA/PS	200	1944	1102i

This APO was in Wales for about 7 months.



## APO 456 History & Markings

Machine Mfg	Ret Addr	#/RA	Location	Value	# /PM	PM-die	Xcler-die	Year	mmdd
UN Model K	1714 <sup>th</sup> SigServCo	951	Honolulu YMCA	UC	456	USA/PS	200	1945	0404i

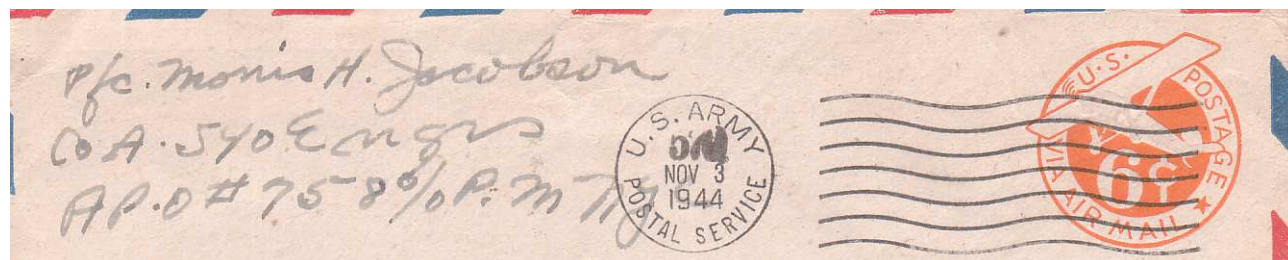
APO 456 remained in Hawaii for its useful lifetime.



## APO 570 History & Markings

Machine Mfg	Ret Addr	#/RA	Location	Value	# /PM	PM-die	Xcler-die	Year	mmdd
UN Model K	CoA 540 <sup>th</sup> Engrs	758	Honolulu YMCA	VS	570	USA/PS	200	1944	1103i

From 1 Nov to 10 Nov, 1944 APO 570 was in Charmes, France.



## APO 592 History & Markings

Machine Mfg	Ret Addr	#/RA	Location	Value	# /PM	PM-die	Xcler-die	Year	mmdd
UN Model K	18 <sup>th</sup> Bomb Sqdn	559	Thorpe Abbots UK	S	592	USA/PS	200	1945	0412

APO 592 operated in England from March 1944 until it ceased operations in Oct 1945.

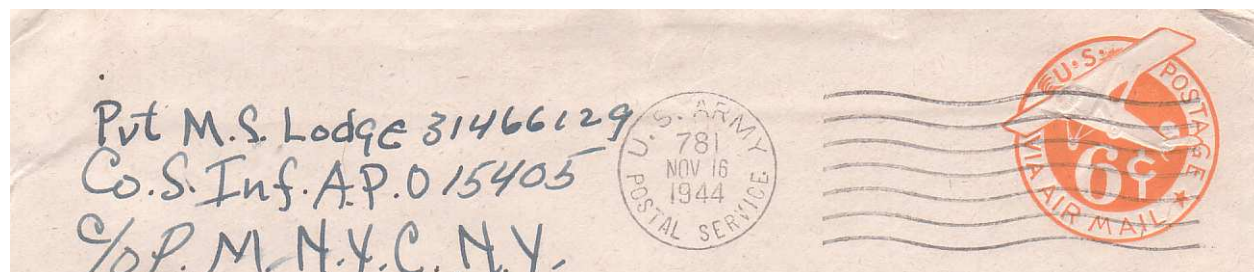


Universal Model K USA / PS - 200



**APO 781****History & Markings**

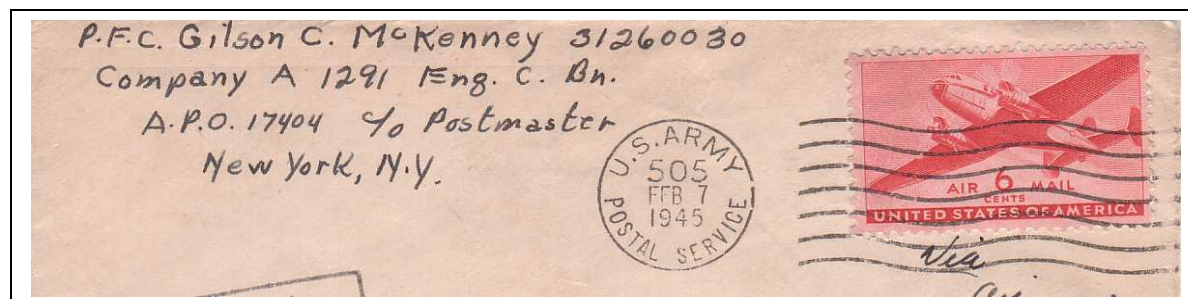
Machine Mfg	Ret Addr	#/RA	Location	Value	#/PM	PM-die	Xcler-die	Year	mmdd
UN Model K	Co S Inf -	15405	Capua, Italy	S	592	USA/PS	200	1944	1116

**APO 505****History & Markings**

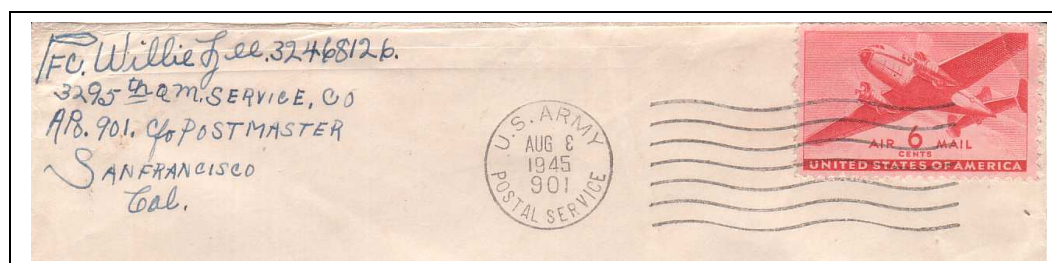
Machine Mfg	Ret Addr	#/RA	Location	Value	#/PM	PM-die	Xcler-die	Year	mmdd
UN Model K	CoA 1291 EngC	17404		S	505	USA/PS	200	1945	0207

APO 17404      Earliest 7 Feb 45 - Latest 5 Nov 45

Interesting to note that the only APO 505 items known have return addresses from temporary APOs.

**APO 901****History & Markings**

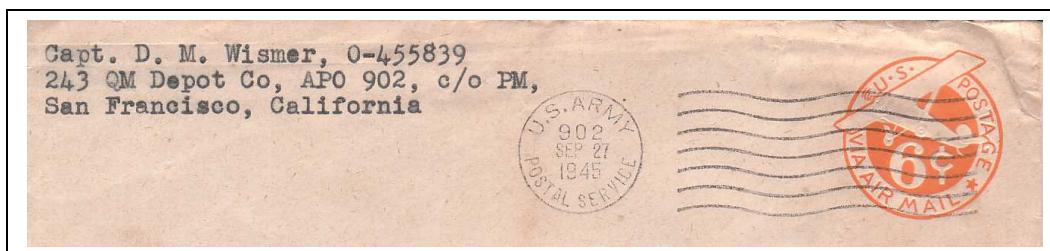
Machine Mfg	Ret Addr	#/RA	Location	Value	#/PM	PM-die	Xcler-die	Year	mmdd
UN Model K	3295GAM Serv	901	Okinawa, Ryukyus	S	901	USA/PS	200	1945	0802



During the period from 13 July 1945 to 16 Sep, 1945 this APO was in the Ryukyu Islands. During this short period, Russ reports eight APO 901 covers dated 18 July to 25 Aug 1945.. The one shown is the cleanest and darkest. A bonus is the inverted number for the day.

## APO 902 History & Markings

Machine Mfg	Ret Addr	#/RA	Location	Value	#/PM	PM-die	Xcler-die	Year	mmdd
UN Model K	243 QM Depot	902	Okinawa, Ryukyus	ES	902	USA/PS	200	1945	0927



The above scan of APO 902 shows a different indicia arrangement to the one in the book, with the '902' in a high position. Two are known, one dated 25 Sep, and one dated 27 Sep 45. Russ reports he has seven more of the style shown in Volume 2. Apparently the 'high' placement is the scarcer of the two varieties.

**Report from: Larry Nelson**

## APO 637 History and Markings

Machine Mfg	Ret Addr	#/RA	Location	Value	#/PM	PM-die	Xcler-die	Year	mmdd
UN Model K	CoC 852ndEng	875	Watford, England	S	637	USA/PS	200	1943	1201

APO 637 serviced HQ of the 8<sup>th</sup> Fighter Command for its life of about 4 years, remaining in the UK until the last year when it relocated to Belgium.



**Report from: Alex Savakis**

## APO 469 History and Markings

Machine Mfg	Ret Addr	#/RA	Location	Value	#/PM	PM-die	Xcler-die	Year	mmdd
UN Model K	BtryB 320thGld	469	France	S	469	USA/PS	200	1945	0314

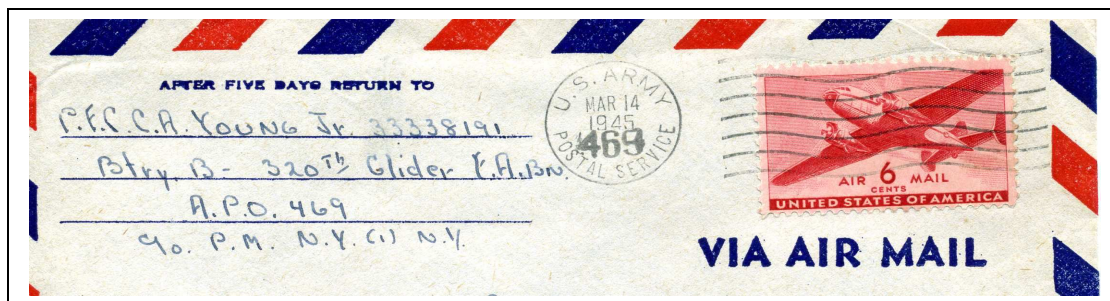
The soldier was PFC Charles A Young Jr and his mail began in August 1944 with the last piece dated April 13, 1945

In the beginning of 1945 the APO indicia was small and high within the dial die. Later in the year, by March, a provisional indicia appears (low and big in the dial die). Since this APO



embarked in April 1943, a machine may have been in use for some time before the specimens recorded. The use known is as follows:

Earliest known	25 Jan, 1945	small APO indicia
Intermediate use	14 Mar, 1945	large provisional APO indicia
Latest known	13 Apr, 1945	large provisional APO indicia

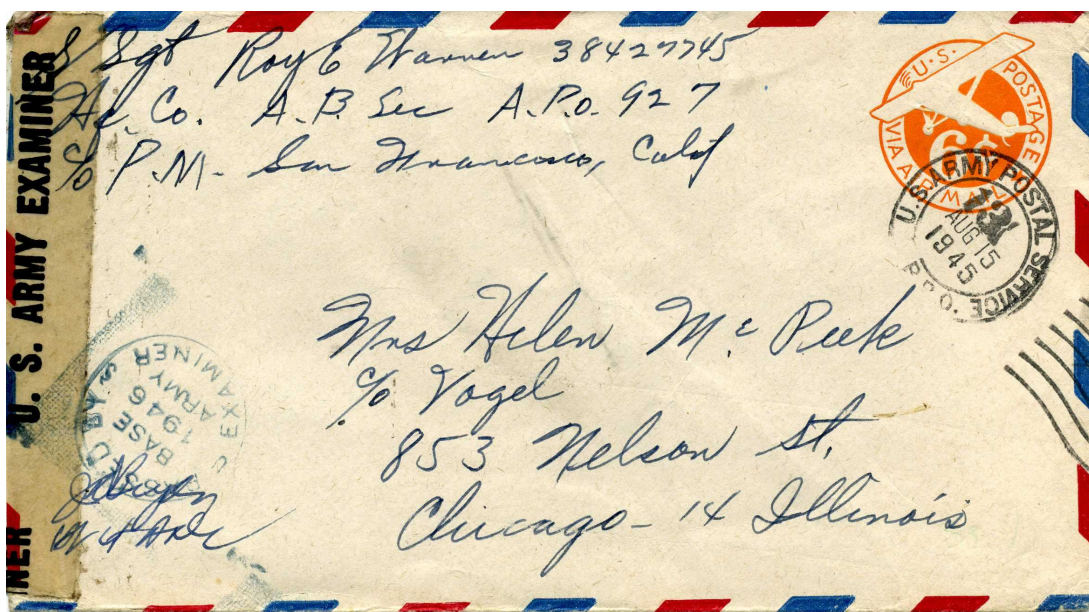


Alex reports further, that “Young was involved in the air assault for Nijmenten-Grave, to take the Rhine. My guess from looking at the APO locations, they were pushed back and wound up near the French border when the Battle of the Bulge resulted from the German counter-thrust. He saw a lot of action. It looks like his unit was returned to France for R&R, and then back to Germany for the final thrust.”

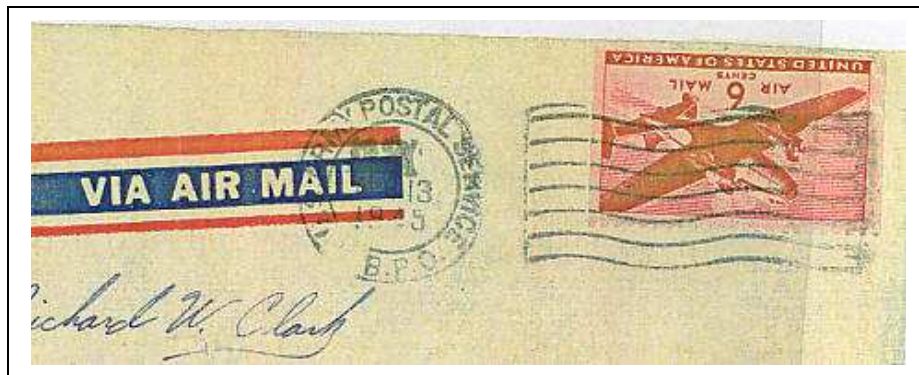
### BPO 13

One of the scarcest cancels is BPO 13 with the provisional die slug in place. Two reports are on hand, one from Dick Graham, and the other from Alex Savakis.

Alex's specimen - below -dated Aug 15, 1945



Graham specimen - -dated Aug 13, 1945 (below) which is now the Earliest known.



### INDEX to FORUM update and notes

APO# and Forum Reference	APO # and Forum Reference	APO # and Forum Reference	APO # and Forum Reference
338 3937	456 3938	637 3939	BPO 13 3941-42
349 3937	465 3847 provisional	781 3939	
	469 3940	901 3939	
	505 3939	902 3939	
	570 3938	925 3848 provisional 9 25	
	587 3846 inverted cancel		
	592 3938		

### A REMINDER

The recently released set of books, a two volume set, entitled U S POSTAL MACHINES of the ARMY POST OFFICES used in WORLD WAR II is still available to MCS members for \$45.00, at a discount from the retail price of \$50.00. Order from Bart Billings' 3722 Vidalia Ave; North Las Vegas, NV 89031. *For this two volume set, make checks payable to Bart Billings.*

The Machine Cancel Society also has these books on sale through Gary Carlson 3097 Frobisher Ave, Dublin, OH 43017 <i>For the set of books in the box, make checks payable to The Machine Cancel Society.</i>	US APO WW2 Part I     \$25 retail
	Member Special \$15
	US APO WW2 Part II     \$25 retail
	Member Special \$15
	US Navy WW2     \$47 retail
	Member Special \$40
	<b>While supplies last, all three for \$60</b>

*The information and stories in the Society Set are different, but not as up-to-date on usage.*