

B

Single digits accompanying dial and cancellation types represent metal die differences observed by Bob Payne.

BAINBRIDGE		DT	300	2	1965	0320	
BAINBRIDGE	45612	DTSz	200	3	1966	0910	1969 0812
	"FESTIVAL OF LEAVES" / 3 RD WEEK OF OCTOBER						
BAINBRIDGE		SLOGAN DTSz	SLOGAN	1971	1016		1974 0930

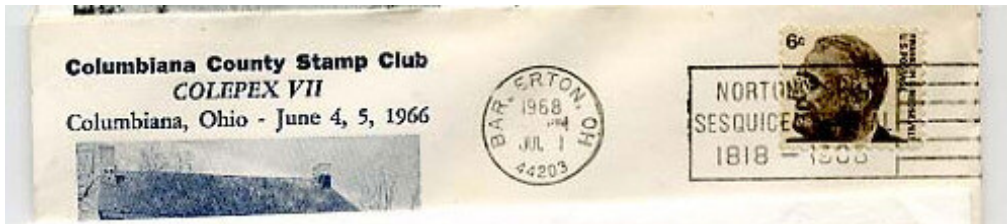


"FESTIVAL OF LEAVES" / 3RD WEEK OF OCTOBER
BAINBRIDGE, OH / 45612 Slogan used 1974 0528
Universal Machine Cancel, electric powered

BALTIC	MODEL K	DT	200		1962		1965
BALTIC	MODEL K	43804 DTSz	200		1967		1991

BARBERTON

BARBERTON		DT	1	200	3	1922	0314	1924 0317
BARBERTON		DT	2	200	3	1928	0228	1930 1229
BARBERTON		DT	3	200	3	1932	0223	
BARBERTON		DT	1	300	2	1933	0624	1938 0325
BARBERTON		DT	2	300	2	1941	0310	1943 0102
BARBERTON		DT	4	200	3	1959	1029	1965 0311
BARBERTON	44203	DTSz	200	3	1966	0219		1973 0906
	NORTON TWP / SESQUICENTENNIAL/ 1818 - 1968							
BARBERTON		SLOGAN DTSz	SLOGAN	1968				



Barberton machine cancel honoring neighboring township. Dated 1968 0701.
BARNESVILLE

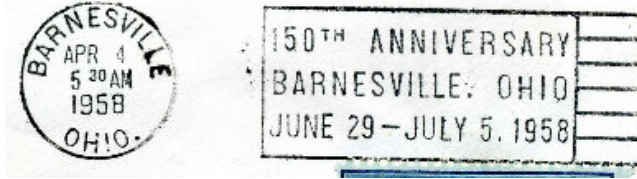
BARNESVILLE		DT	600		1928	0302		
BARNESVILLE		DT	1	300	2	1937	1023	
BARNESVILLE		DT	2	300	2	1947	0313	1954 0309

2008 Machine Cancel Symposium: OHIO UNIVERSAL CANCELS

150TH ANNIVERSARY
BARNESVILLE, OHIO
JUNE 29 – JULY 5, 1958

BARNESVILLE SLOGAN DT SLOGAN 1958

BARNESVILLE
1958 0404 use
Sesquicentennial
Slogan

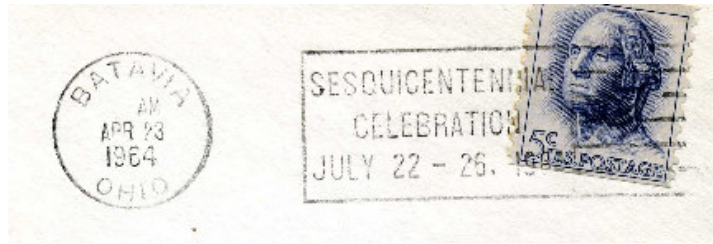


BATAVIA

BATAVIA DT 1 300 2 1941 0717 1959 0613
BATAVIA DT 2 300 2 1963 0417 1965 0607

SESQUICENTENNIAL /
CELEBRATION /
JULY 22 -26, 1964

BATAVIA SLOGAN DT SLOGAN 1964
BATAVIA 45103 DTSz 300 2 1966 0802 1982 0907



BATAVIA / OHIO

Slogan: SESQUICENTENNIAL / CELEBRATION / JULY 22 – 26, 1964
Used 1964 0423

BATH

BATH MODEL K DT 200 1962 1965
BATH MODEL K 44210 DTSz 200 1965 1214 1989 1114
BATH MODEL K
SLOGAN MENTAL HEALTH DTSz SLOGAN 1973
MODEL K 44210
BATH SLOGAN HEART DTSz SLOGAN 1973

BAY VILLAGE DT 300 2 1957 1221 1971 0329

BEACH CITY MODEL K DT 200 1961 0609 1966 0301
BEACH CITY MODEL K 44608 DTSz 200 1966 1115 1986 0603

BEDFORD MODEL K DT 200 1949 0725 1952 0527

BEDFORD		DT	300	2	1955	0622
BELLE CENTER	MODEL K	DT 200	200		1947	1958 0630
BELLAIRE		DT	600		1922 1224	1935 0204
BELLAIRE		DT	300	2	1937 0619	1954 0608


BELLEFONTAINE

With 6-wavy line cancels – one full wave – Type 600


BELLEFONTAINE		DT	600		1927 0207	1928 0512
BELLEFONTAINE	A continuation of the 1927-1928 dies?	DT	600		1934 0214	1934 0614
BELLEFONTAINE	NEW!	DT 1	600		1934 1103	1934 1119

Examples of the 1927-1928 dies were not available for inspection. Bob Payne’s list notes a gap between 1928 and 1937. What could have been used?

- Several examples were found with worn dials from early 1934, used with the Type 600 cancellation. It is likely that this represents a continuation of the 1927-1928 dies. (This needs to be verified by comparing these 1934 uses with the 1927-1928 uses.)

	<p>At left: 1934 0604 usage. Type DT 600. Note the wear in the postmark dial. You may also wish to note the E of BELLEFONTAINE. The lower bar of E is very short. It does <i>not</i> match later dies used from 1937-1965.</p>
---	---

- In late 1934, a new dial is observed. The letters of BELLEFONTAINE are small, and match the metal postmark dial used from 1937-1951.

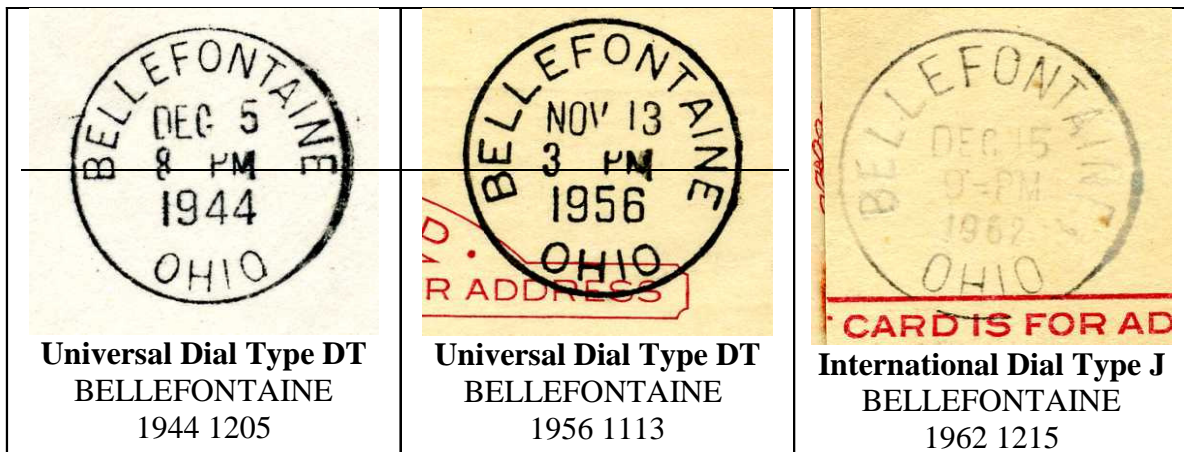
	<p>At left: 1934 1119 usage. Type DT 600. This is a new postmark die of the same style as previously noted. This 1934 postmark die matches the 1937-1965 postmark die, but uses an earlier cancellation die (with only one full wave in its cancellation).</p>
---	---

Because the November 1934 postmark dials match the 1937 dials, Bob Payne’s die listing identification with a “1” next to the catalog type is kept. As more dials are compared, recorded and added to the listing, the number listing for the dies will be changed so they run consecutive from the very first DT dial used at Bellefontaine to the very last.

In 1937 it is observed that the 1934 new postmark die is used with a new cancellation die at Bellefontaine. The 1937 cancellation die is also of a different style. Instead of having only one full wave in its cancellation, the 1937 cancellation die has two full waves. Hence the 1937 cancellation die is identified as a new type for Bellefontaine . . . Type 300.

With 6-wavy line cancels – two full waves – Type 300

BELLEFONTAINE	DT	1	300	2	1937 0706	1951 1120
BELLEFONTAINE	DT	2	300	2	1956 0609	1965 0425



In comparing the three Bellefontaine Dials above, you will note that the 1944 and 1956 postmarks are produced by Universal machines. However, the 1962 example is from an International machine. In comparing the two, you will note that the pre-Zip Code Universal dials have no comma after the city name. On the other hand, the International pre-Zip Code dial has a comma, and it is rather large. You will also note that the metal slug for the year is much larger for the Universal dial in comparison to the International year.

It is also noteworthy that the metal dies that produced the 1944 and 1956 examples are different. The 1944 and 1956 examples are of the same style, and both cataloged as Type DT. The 1944 example has smaller engraving, and you will note that the B and E of Bellefontaine are directly opposite each other at the 9-o’clock and 3-o’clock positions. But the 1956 example (with the larger lettering) has the B and E dropped below these positions. A straight line has been drawn across the diameter of the 1944 and 1956 dials, and you can compare the positioning of the lettering.

Bob Payne did his best to observe and record these die differences, and to leave notes that another die may have been used but not reported. Both the 1944 and 1956 examples used a Type 300 wavy-line cancel, which Bob noted in his data base

BELLEVUE

BELLEVUE		BT	1	200	1	1913	1222		
BELLEVUE		BT	2	200	1	1914	1118	1916	1219
BELLEVUE		DT		300	1	1918	0507	1922	0516
BELLEVUE	OHIO. with period after Ohio	DT		600		1931	1221	NEW	
BELLEVUE	OHIO. with period after Ohio	DT		300	2	1936	1126	1959	0727
	BELLEVUE, OHIO /								
	1851 CENTENNIAL 1961 /								
	JULY 1-4, 1951								
BELLEVUE		SLOGAN	DT			SLOGAN	1951		



At left: Bellevue 1913 1222
Type BT (Die 1) 200
A 7-wavy line cancellation
with 2 full waves.

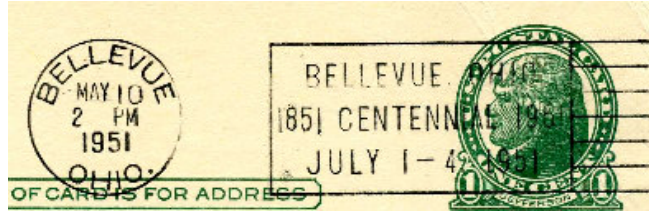
From late 1914 to the end of 1916, the Bellevue Universal used a different postmark dial, referred to by Bob Payne as Die 2. The information is arranged the same as Die 1, hence both are cataloged as Type BT. Die 2 lettering is noticeably different. Die 1's first E in BELLEVUE has almost equal length bars. But Die 2's first E has a much shorter middle bar. What was used in early to mid 1914? Examples will be needed to complete the record.

Starting in 1918, a smaller postmark dial is used, Type 300, with a 6-wavy line cancel with two full waves is found used in Bellevue, to 1959, according to Bob Payne with a significant gap in the record from 1922 to 1936. Newly found is a 6-wavy line cancel with but one full wave. It is listed as Type DT 600, and featured below:





At left: BELLEVUE 1931 1221
Type DT 600

The post office in 1951 installed a slogan onto the Universal machine at Bellevue to mark the community's centennial.



In 1959, an International machine cancel was installed at the Bellevue Post Office, and for a short time, both the International and Universal machines were used.

 <p>UNIVERSAL DIAL 1959 0727 Last Known Use Type BT Dial</p>	<p>The Universal Type BT Dial and International Type J dials (<u>pre-Zip Code</u>) can be confusing. First, is there a comma after the city name? If so, it is a J-Dial. Second, look at the size of the year. If it is large, it is a Universal.</p>	 <p>INTERNATIONAL DIAL 1965 0520 Type J Dial Payne reports 1959 0411 as the Earliest Known Use</p>
---	---	---

BELMONT	43718	DTSz	300	2	1967 0209	1971 0507
BELPRE		DT	300	2	1956 1027	1964 0630
BELPRE	45714	DTSz	300	2	1966 1016	1983 1115



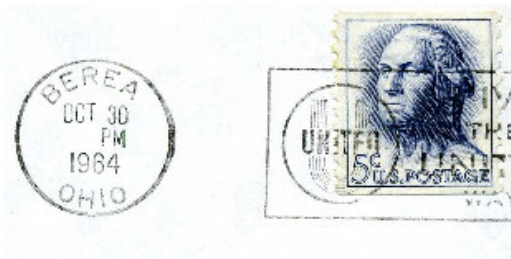
BELPRE, OH / 45714 Universal Type DTSz 300 Machine Cancel
Date of Use: 1966 1215

BELLVILLE	MODEL K	DT	200		1949	1960 0404
-----------	---------	----	-----	--	------	-----------

BEREA

BEREA		DT	600		1928 0328	
BEREA		DT	300	2	1934 0629	1959 0405
BEREA	PRAY/FOR/PEACE	SLOGAN	DTS	SLOGAN	1964 0730	1964 0827
BEREA	GIVE / TO / THE / UNITED / WAY <i>With U and UNITED pictorial</i>	SLOGAN	DTS	SLOGAN	1964 1019	1964 1030
BEREA	PRAY/FOR/PEACE	DTSz	SLOGAN	SLOGAN	1966 0424	1980 0822

SLOGAN



At left: BERE A / OHIO OCT 30 / PM / 1964 Universal machine cancel with United Way slogan featuring large U in circle, with UNITED across center, plus the words, “ GIVE / THE / UNITED / WAY.”



At Left: BERE A, OH / 44017 AUG 22 / AM / 1980 Universal machine cancel with Type DTSz postmark dial, and PRAY / FOR / PEACE slogan.

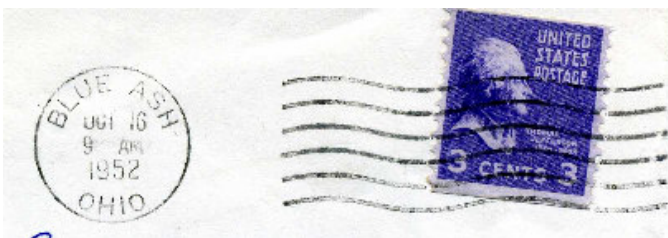
A DTSz type dial has not been reported for Berea, Ohio, accompanied by a wavy-line cancel. If you have this postmark dial, with a wavy-line cancel, kindly send a photocopy to the Machine Cancel Forum Editor.

BERLIN HEIGHTS	MODEL K		DT	200		1959 0506	1959 0507
BERLIN HEIGHTS	MODEL K	44814	DTSz	200		1956 1216	1967 0608
BERLIN HEIGHTS		44814	DTSz	300	2	1973 0810	1984 0906
BETHEL			DT	300	2	1951 1016	1958 1007

BLUE ASH

BLUE ASH			DT	300	2	1952 1016	1956 0409
----------	--	--	----	-----	---	-----------	-----------

Blue Ash was an independent post office near Cincinnati. The Blue Ash post office was established in 1887, and absorbed into the Cincinnati administration in 1957. Note the single digit 2 in the cancellation listing. Is there an earlier cancellation die used prior to 1952? The listing by Bob Payne suggests we should look for one. It would be the same style as the 1952-1956 cancellation die, in that there are six wavy lines and two full waves. But the other cancellation die might have thinner lines OR some other distinguishing characteristic. There is a hint here to keep a watchful eye!

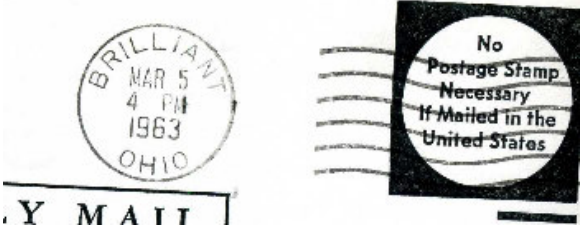
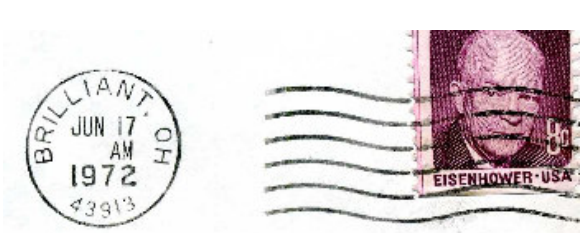


At left: BLUE ASH 1952 1016 Universal Type DT 300

BRADFORD		45308	DTSz	300	2	1974 0923	1983 0727
BREMEN	MODEL K		DT	200		1947	1963 0722
BREMEN	MODEL K	43107	DTSz	200		1966 0623	1984 0103
BREWSTER	MODEL K		DT	200		1949 0617	1959
BREWSTER	MODEL K	44613	DTSz	200		1965 1217	1983 1213
BRIDGEPORT			DT	300	2	1939 0208	1955 0913
BRILLIANT							

A single number “2” next to the listing for the 1966-1984 cancellation die is a hint in Bob Payne’s list to look for something earlier than 1966 (and after the 1949-1953 hand powered Model K) used in Brilliant. Indeed, a 1963 use with no zip in the dial was found on an electric device!

BRILLIANT	MODEL K		DT	200		1949 0617	1953 1218
BRILLIANT			DT	300		1963 0305	NEW
BRILLIANT		43913	DTSz	300	2	1966 0625	1984 0106

	<p>At left: BRILLIANT / OHIO 1963 0305</p> <p>This new example was found on a cut, 2 x 4, a piece of a paid reply card. It is not pretty, but it does represent the only reported example of this pre-Zip Code dial used on the Brilliant Universal machine cancel device.</p>
	<p>At left: BRILLIANT, OH / 43913</p> <p>Universal machine cancel Type DTSz 300</p> <p>The need to add a zip code crowds the Universal postmark dial. The state name moves to the top, and is abbreviated. The comma between the City and State is very small. The year 1972 is relatively large in size.</p>

2008 Machine Cancel Symposium: OHIO UNIVERSAL CANCELS

BRISTOLVILLE	MODEL K		DT	200		1962 1030	1964 0817
BRISTOLVILLE	MODEL K	44402	DTSz	200		1968 0312	1986 1128
BROOKFIELD	MODEL K		DT	200		1949	1963 0812
BRUNSWICK	MODEL K		DT	200		1945 1018	1949 0528
BRUNSWICK			DT	300	2	1959 0401	1965 0617
BRUNSWICK		44212	DTSz	300	2	1966 0214	1970 0112
BUCKEYE LAKE	MODEL K		DT	200		1943 0810	1961 0508
BUCKEYE LAKE	MODEL K	43008	DTSz	200		1966 1108	1985 1106
BUCYRUS			DT	600		1927 0223	1934 0914
BUCYRUS			DT 1	300	2	1936 0330	1944 0418
BUCYRUS			DT 2	300	2	1948 1215	1951 0616
BUCYRUS			DT 3	300	2	1959 0109	
BUTLER	MODEL K		DT	200		1963 0504	1966 0128
BUTLER	MODEL K	44822	DTSz	200		1966 0527	1990 0413
BYESVILLE			DT	300	2	1955 1122	1965 0202
BYESVILLE		43723	DTSz	300	2	1967 0316	1981 0203

Notes:
