

F

Single digits following postmark dial types and cancellation types represent metal die differences observed by Bob Payne.

| | | | | | | | |
|----------|------------|-----|---|------|------|------|------|
| FAIRBORN | DT | 300 | 2 | 1950 | 0701 | 1966 | 1218 |
| FAIRBORN | 45324 DTSz | 200 | 3 | 1970 | 1019 | | |

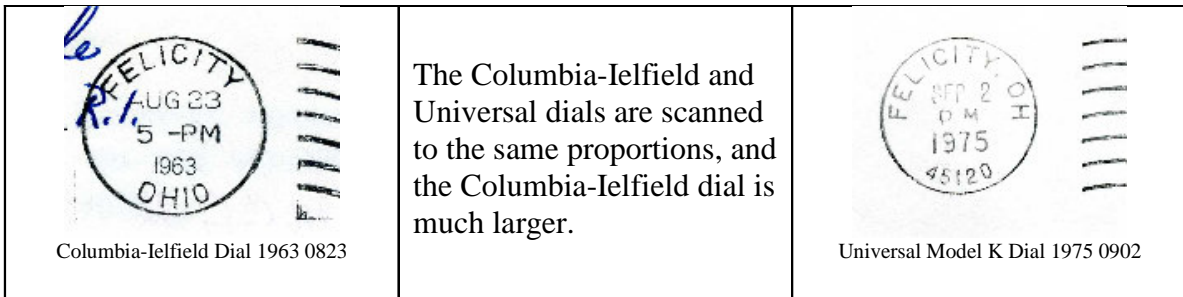


| | | | | | | | |
|-----------------|----|-----|---|------|------|------|------|
| FAIRFIELD | DT | 300 | 2 | 1964 | 0420 | 1967 | 1030 |
| FAIRPORT HARBOR | DT | 300 | 2 | 1961 | 0411 | 1985 | 0719 |

MODEL K

| | | | | | | |
|----------|------------|-----|------|------|------|------|
| FELICITY | 45120 DTSz | 200 | 1973 | 0803 | 1984 | 0817 |
|----------|------------|-----|------|------|------|------|



A Columbia-Ielfield machine cancel device was in operation in Felicity prior to 1973. Compare the Columbia-Ielfield dial with the Universal:



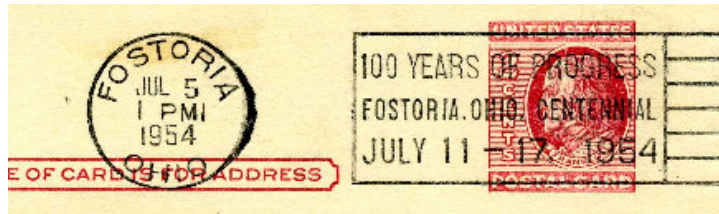
2008 Machine Cancel Symposium: OHIO UNIVERSAL CANCELS

| | | | | | | |
|---------|--|----|-----|---|-----------|-----------|
| FINDLAY | | DT | 300 | 1 | 1917 0707 | 1925 1005 |
| FINDLAY | | DT | 600 | | 1926 0731 | 1935 0812 |
| FINDLAY | | DT | 300 | 2 | 1938 0515 | 1957 0526 |

After 1960, Findlay used an International machine cancel device fitted with a Type J-Dial. What was used between 1957 and 1960? That is the record we need to establish!

| | | |
|---|--|--|
|  <p>Universal Type DT Dial 1946 0805</p> | <p>The Universal and International dials used in Findlay, Ohio, are scanned in approximately the same proportions for comparison. Note the size of the year slugs in each. Also, the International uses a large comma after the city name.</p> |  <p>International Type J Dial 1961 0401</p> |
|---|--|--|

| | | | | | | |
|----------|--|-------------|--------|-----|-----------|-----------|
| | MODEL K | | | | | |
| FOREST | | DT | 200 | | 1944 1219 | 1965 0908 |
| | MODEL K | | | | | |
| FOREST | | 45120 DTSz | 200 | | 1966 0117 | 1984 0106 |
| | MODEL K | | | | | |
| | STRIKE | | | | | |
| FOREST | | SLOGAN DTSz | SLOGAN | | 1965 | |
| | | | | | | |
| FOSTORIA | | DT | 300 | | 1920 0407 | |
| FOSTORIA | | DT | 200 | 2 | 1920 0409 | 1931 1014 |
| FOSTORIA | | DT | 1 | 300 | 2 | 1932 1216 |
| | | | | | | 1953 0408 |
| | 100 YEARS OF PROGRESS/ FOSTORIA, OHIO, CENTENNIAL JULY 11 - 17, 1954 | | | | | |
| FOSTORIA | | SLOGAN DT | SLOGAN | | 1954 | |
| FOSTORIA | | DT | 2 | 300 | 2 | 1960 0111 |
| FOSTORIA | | 44830 DTSz | 300 | 2 | 1966 0217 | 1982 1203 |



1954 0705 Fostoria centennial slogan cancellation

| | | | | | | |
|----------|---------------------------|------------|-----|-----|-----------|-----------|
| FREEPORT | | 43973 DTSz | 300 | 2 | 1983 0825 | 1984 0105 |
| | | | | | | |
| FREMONT | | DT | 300 | 1 | 1918 1108 | 1921 1223 |
| FREMONT | OHIO. [period after Ohio] | DT | 600 | | 1927 0214 | 1933 0613 |
| | OHIO with no period | | | | | |
| FREMONT | M of FREEMONT normal | DT | 1 | 300 | 2 | 1935 0819 |
| FREMONT | OHIO with no period | DT | 2 | 300 | 2 | 1940 1016 |
| | | | | | | 1957 0312 |

FREMONT M of FREEMONT wide
 PRAY / FOR / PEACE SLOGAN DT SLOGAN 1958



At left:
 FREEMONT 1958 0630 Universal with
 PRAY / FOR / PEACE slogan





Starting in 1959, Fremont utilized an International machine cancel device fitted with a J-Dial. Fremont commemorated the War of 1812 with a slogan. For comparison, the International dial and slogan are shown below:



Above, Fremont 1963 0802 slogan **BATTLE OF FT. STEPHENSON / -- 150TH ANNIVERSARY -- / -- JULY 25 -- AUGUST 3 --** : This International slogan cancellation uses a Type J International dial. The style is very similar to a Universal Type DT dial, and understandably can be confusing. Remember that the J and DT dials have no zip code, and the J dial has a large comma after the city name. The DT dial has no comma. The DT dial has a relatively larger year slug in comparison to the J dial.

Notes:

Quick Cancellation Type Chart

| | |
|---|---|
| <p>6 wavy lines / 2 full waves Type 300</p>  | <p>6 wavy lines / 1 full wave Type 600</p>  |
| <p>7 wavy lines / 2 full waves Type 200</p>  | <p>7 wavy lines / 1 full wave Type 500</p>  |