

2008 Machine Cancel Symposium: OHIO UNIVERSAL CANCELS

KENT



DT Die B -- OHIO followed by period 600 1928 0313 1935 0321

This cancel represents the use of the NEW Die B with a new cancellation.

	<p>At left, Kent, Ohio 1933 0301</p> <p>Type DT (Die B) – 600</p> <p>New postmark dial (Die B) with new cancellation type (Type 600, ie. 6 wavy lines in one full wave)</p>
--	--

KENT

DT Die B OHIO followed by period 300 1935 1001 1939 1020

Note how the Universal machine in Kent returns to using a 6-wavy line cancel with 2 full waves (Type 300) cancellation. Die B postmark, in use since at least 1927, is showing wear.

	<p>At left, Kent, Ohio 1935 1206</p> <p>Type DT (Die B) - 300</p>
--	--

Die B would have to be replaced, and in 1939 a new postmark dial was installed (Die C). Die C is easily spotted, as it has no period after OHIO.

KENT

DT Die C OHIO with no period 300 1939 1114 1959 0302

<p>Kent, Ohio Dial Die B 1939 1020</p>	<p>Here in 1939 you can compare the last of the Die B's use, and the first of Die C. Besides differences in the E of KENT, Die C has no period after OHIO. After Die C was installed, was Die B used again?</p>	<p>Kent, Ohio Dial Die C 1939 1114</p>
--	---	--

2008 Machine Cancel Symposium: OHIO UNIVERSAL CANCELS

KENT FIGHT TB / SUPPORT YOUR / DT Die C SLOGAN 1952, 1955
 TB ASSOCIATION
 with TB emblem at left
 SLOGAN

KENT DT Die 2 – noted by Bob Payne 300 1959 0414 1963 0909



Note how much smaller the letters are engraved in comparison to Dies B and C.

KENT KENT STATE UNIVERSITY / DT Die 2 SLOGAN 1960
 50TH ANNIVERSARY /
 1910 -- 1960
 SLOGAN

KENT DT Die 3 – noted by Bob Payne
 Picture not available. The state is
 at the bottom of the dial. 300 1963 1129 1965 0611

KENT DTS Noted by Bob Payne
 Picture not available. The state is
 at the top of the dial. 200 1965 1012 1966 0201

KENT 4424 0 DTSz 200 1966 0514 1984 0104

KENT AMERICAN LEGION / DTSz 44240 SLOGAN 1969
 50TH ANNIVERSARY /
 1919 – 1969
 SLOGAN

A most interesting machine cancel is found for Kent from 1974-1975. What appeared to be a Universal dial was accompanied by a machine marking that is common to machine cancels produced by a facer – canceller machine, like a Pitney-Bowes Mark II or similar facer-canceller device.

Reg Morris wrote about these Kent markings. He also found a similar marking on a 1960 Los Angeles machine, also a Universal. The markings are farther from the dial than are normally found on a facer canceller cancel. Could these be older facer-canceller machines sent to Los Angeles and Kent? Could these be engraving errors on the cancellation hubs (which produce the cancellation and hold the postmark dial)? Or are these Universal dies forced onto another manufacturer's machine?

	<p>Figure 1, at left: DETROIT / MICH 3 A MAY 11 / 12 M / 1960 With trail bars at left of postmark dial.</p>
	<p>Figure 2, at left: LOS ANGELES / CALIF 27 AUG 31 / 11 30 PM / 1960 With what appears to be a trail bar to the lower left of postmark dial.</p>
	<p>Figure 3, at left: KENT, OH / 44240 FEB 9 / AM / 19 74 With what appears to be a trail bar to the upper left of the postmark dial.</p>
	<p>Figure 4, at left: KENT, OH / 44240 MAY 15 / PM / 1975 With what appears to be a trail bar to the upper left of the postmark dial.</p>

Above, only **Figure 1** is confirmed to be produced by an early facer-canceller machine. Note the pair of trail bars used. **Figures 2, 3, and 4** have a single trail bar, and quite a distance from the postmark dial in comparison to the machine in **Figure 1**. *What caused these markings on the Los Angeles and Kent machines? Was a non-Universal cancellation hub forced onto a Universal machine, and the mismatch caused a stray line of ink to print? Or were these early facer-canceller machines placed into later service at Los Angeles and Kent, being used with the local Universal postmark dial? Or is there another reason for these marks?*

Many thanks to Reg Morris for discovering these items, and bringing them to collectors' attention.

KENTON

“The earliest known use of Universal machines was in Washington, D.C., and in New York (Hudson Terminal), in 1909.” Bart Billings, A History of Postmarking Machines Used in Ohio (Ohio Postal History Society 1982) at page 32. Bob Payne describes these uses as trials, for purposes of testing various models. Billings, Payne, & Morris, A Primer – US Machine Postal Markings (2005) at pages 183-192. As a result of experiments and trials, sixty improved Universal Model B machines were installed during the period July 1, 1910, to June 30, 1913. Among the first twenty-five to be installed was the Universal at Kenton, Ohio. Bart Billings, Universal Stamping Machine Co – Machines and Postal Markings (Revision #2 October 1994), Appendix F.

Among Ohio Universal cancels, the bar cancel Universal Type 100 is unique to Kenton.

KENTON A 100 1910 0810 1910 1229

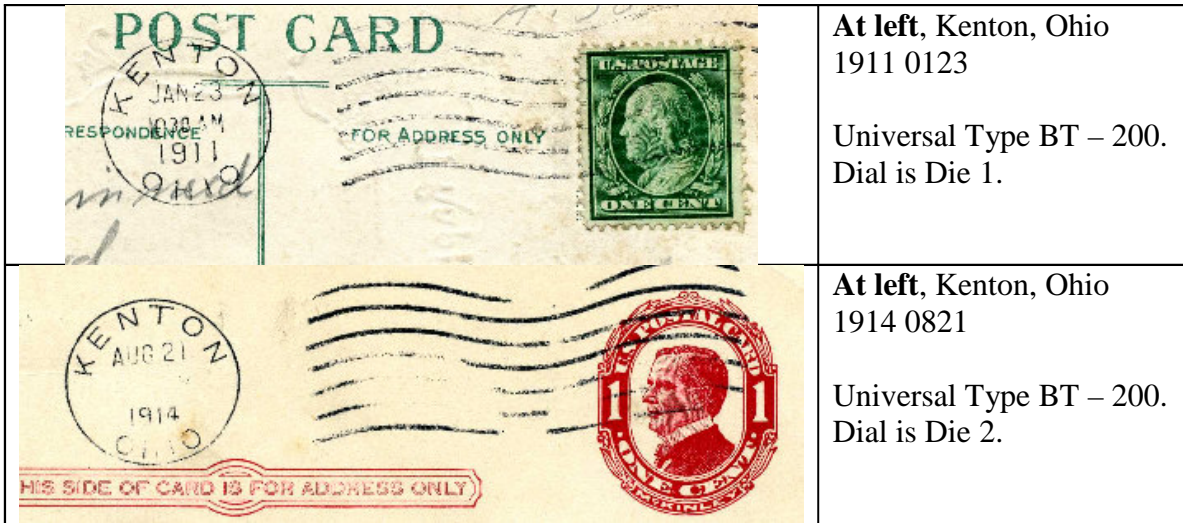
	<p>At left, Kenton, Ohio</p> <p>1910 0810 12 30 PM</p> <p>Universal Type A-100</p>
<p>This machine cancel is the earliest recorded Universal machine cancel used in the State of Ohio.</p> <p style="text-align: right;">Ex Reg Morris</p>	

The 7-straight lines and the curved year at the bottom of the postmark dial distinguish this Universal machine cancel from similar looking American bar cancel of that same period. Compare these cancels:

	<p>At left, Kenton, Ohio</p> <p>1910 1123 3 30 PM</p> <p>Universal Type A-100 Seven bars -- year in dial curved to bottom of postmark dial.</p>
	<p>At left, Jackson, Ohio</p> <p>1909 0901 3 – PM</p> <p>American 7-bar cancel Seven bars – year however is straight across the bottom of the dial.</p>
<p>American 6-bar cancels also were used in Ohio at Greenfield, Oakley, and Oxford.</p>	

2008 Machine Cancel Symposium: OHIO UNIVERSAL CANCELS

KENTON	Large year in dial Center bar of E is half the size of the top and bottom bars	BT	1	200	1	1911 0123	1913 1231
KENTON	Small year in dial Center bar of E is longer than Die 1	BT	2	200	1	1914 1009	1916 1213



KENTON	A switch to a smaller, Type D dial	DT	300	1	1918 1228	1919 1111	
KENTON		DT	600		1926 0226	1939 0411	
KENTON		DT	1	300	2	1939 1106	1950 0907
KENTON		DT	2	300	2	1952 1030	1959 0615
KENTON		DT	1	300	2	1963 0102	1963 0129
KENTON		DT	2	300	2	1964 1029	1965 0717
KENTON		43326 DTSz	300	2	1965 1117	1971 0405	

KETTERING

KETTERING		DT	300	2	1959 0727	1968 0123
-----------	--	----	-----	---	-----------	-----------

Smaller communities using Model K, hand powered machine cancel devices:

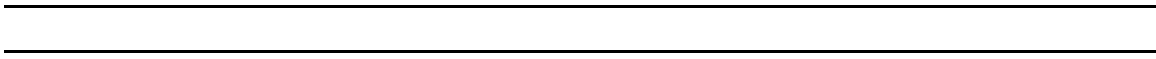
KIDRON	MDOEL K		DT	200	1963 0527	1965 0102
KIDRON	MODEL K	44636	DTSz	200	1966 0404	1973 0516
KILLBUCK	MODEL K		DT	200	1948 0508	1977 0706
KILLBUCK	International Electric	44637	Hz	30	NEW	1999 0708 <i>In red ink!</i>

Killbuck is located in Holmes County, which has a very large Amish population. The hand powered Model K would have fit nicely into the tradition of avoiding reliance on the greater, outside community. Note the zip code was not added to the Model K's dial. Eventually, an electrical machine was installed, but it was an International. Both Killbuck examples are featured below for comparison.






KINGSTON	MODEL K		DT	200	1950 0401	1964 0109
KINGSTON	MODEL K	45644	DTSz	200	1967 0329	1974 0629
KIRKERSVILLE	MODEL K	43033	DTSz	200	1974 0930	1984 0203

Notes:



Quick Cancellation Type Chart

<p>6 wavy lines / 2 full waves Type 300</p> 	<p>6 wavy lines / 1 full wave Type 600</p> 
<p>7 wavy lines / 2 full waves Type 200</p> 	<p>7 wavy lines / 1 full wave Type 500</p> 