

L

Single digits following postmark dial types and cancellation types represent metal die differences observed by Bob Payne.

LAGRANGE

LAGRANGE	MODEL K		DT	200		1959 1203	1965 0720
LAGRANGE	MODEL K	44050	DT	200		1966	1984

LAKEWOOD

LAKEWOOD			DT	1	200	3	1924 0207	1934 0913
LAKEWOOD			DT	2	200	3	1938 1011	1942 1012
LAKEWOOD			DT		500		1954 1011	NEW

LANCASTER

LANCASTER			DT		500		1925 0611	1928 0425
LANCASTER			DT		600		1934 0428	NEW
LANCASTER			DT	1	300	2	1935 0220	1955 0503
LANCASTER			DT	2	300	2	1958 0113	1966 0203
LANCASTER		43130	DTSz		300	2	1966 1202	1967 0427
LANCASTER		43130	DTSz		200	3	1969 0919	1972 0302

LEAVITTSBURG

LEAVITTSBURG	MODEL K		DT		200		1945	1965 0726
--------------	---------	--	----	--	-----	--	------	-----------

The Leavittsburg post office used an International machine starting 1965 1029.

LEESBURG

LEESBURG			DT		300	2	1947 0711	1953 1028
LEESBURG	PRAY FOR PEACE	SLOGAN	DT		SLOGAN		1968	NEW LISTING -- DIAL WITH ZIP CODE



At left,
 Leesburg, Ohio 45135
 1968 0826

This is the first report of a
 Leesburg Universal cancel with
 zip in dial.

Ex Genevieve Covalt

LEIPSIC

LEIPSIC		DT	600		1925 1130	1932 1122
LEIPSIC		DT	300	2	1935 0216	1965 0601
LEIPSIC		45856 DTSz	300	2	1966 0127	1977 0104

LEWISBURG

LEWISBURG	MODEL K	DT	200		1959 1023	1960 1107
LEWISBURG		DT	300	2	1963 1001	1965 0821
LEWISBURG		45338 DTSz	300	2	1967 1002	1983 1212

LEXINGTON

LEXINGTON	MODEL K	DT	200		1951	1959 0228
-----------	---------	----	-----	--	------	-----------

Lexington used an International, electric, after the Model K, with a Type J-Dial.

LIMA

LIMA	OHIO at top of dial	BTS	201		1913 0723	1915 0617
LIMA	OHIO at bottom of dial	BT	201		1915 0927	1916 1221
LIMA	D dials are smaller than B	DT	300	1	1917 1224	1920 1222

For the period 1921-1930, the Editor found 2 dials (with and without periods after OHIO), and intermittent use of the Type 200 cancel (7-lines/2-waves) and Type 500 cancel (7-lines/1-wave). Your participation in getting more examples would be appreciated. A work sheet with findings already made are listed below. They include the two listings (1926 and 1928) by Bob Payne. Use this worksheet to fill in the blank holes.

OHIO no period	BT 200 7-lines/2-waves	1921 0303	NEW

OHIO with period	BT 500 7-lines/1-wave	1926 0602	NEW
	BT 200 7-lines/2-wave	Payne reports	1926 0602
	BT 200 7-lines/2-waves	Payne reports	1928 0426
OHIO no period	BT 500 7-lines/1-wave	1928 0726 NEW	1930 0512 NEW
OHIO with period	BT 500 7-lines/1-wave	1930 1031	NEW

This time period for Lima would appear to be a fertile area for discovery. Please photocopy the Editor with your finds.

LIMA		BT	1	200	3	1932 0314	1941 1028
LIMA	M of LIMA is very wide The D dial is much smaller than the B dial.	BT	2	200	3	1942 0119	1948 0720
LIMA		DT	1	200	3	1949 0909	1950 0817
						The small D dial was also used 1954 0301 for the AM88 First Flight from Lima. Are there other intermittent uses of the small D dial?	
LIMA		BT	3	200	3	1951 0430	1956 0817
LIMA		DT	1	200	3	1959 0207	1965 0804
LIMA	GIVE / THE / UNITED / WAY with United emblem to left	DT		SLOGAN		1964	
				SLOGAN			
LIMA	Dial DTS, with state at top of dial	DTS		200	3	1967 0913	1970 0612



LIMA DT 1 200 3 1971 0707

Rz dial with zip at top 458



LIMA Rz 200 3 1976 0514 1983 0906

LIMA, MODEL K

MODEL K

The Lima Model K has not been seen by the Editor, and a photocopy is requested.

LIMA DT 200 1959

LINDSEY

LINDSEY	MODEL K		DT	200	1963	1964 1021
LINDSEY	MODEL K	43442	DTSz	200	1966 0603	1983 0218

LOCKLAND

LOCKLAND DT 200 3 1926 0929 1949 0124

LODI

LODI DT 300 2 1945 1123 1961 0411

LODI, OHIO /
150TH ANNIVERSARY /
1811 - 1961

LODI SLOGAN DT SLOGAN 1961

LODI 44254 DTSz 300 2 1966 0527 1972 1030

LOGAN

LOGAN			DT	1	300	2	1945 0328	1945 0904
LOGAN			DT	2	300	2	1949 0409	1951 0504
LOGAN			DT	3	300	2	1962 0821	1965 0104

2008 Machine Cancel Symposium: OHIO UNIVERSAL CANCELS

LOGAN 43138 DTSz 300 2 1966 0117 1983 0103

LONDON

LONDON DT 300 2 1961 1219 1966 0118
 LONDON 43140 DTSz 300 2 1966 0328 1998 0617

LORAIN

Updated 2008 0314 in red

LORAIN Uses found for 1918, 1919 DT 300 1 1918 1015 ajs 1920 1222 pay
 LORAIN DT 600 1920 1222 pay 1927 0820 gmc
 LORAIN Intermittent use for 1922 DT 300 1922 0209 ajs
 LORAIN DT 600 1931 1103 ajs 1934 0611 ajs
 LORAIN DT 1 300 2 1934 0802 1943 0506
 LORAIN DT 2 300 2 1947 1024 1948 1001

Code: ajs – Savakis gmc – Carlson pay – Payne

LOWELLVILLE

LOWELLVILLE MODEL K DT 200 1944 1947 0101
 LOWELLVILLE DT 300 2 1959 0828 1965 1007
 LOWELLVILLE 44436 DTSz 300 2 1966 0412 2000 1010

LOWER SALEM

LOWER SALEM MODEL K DT 200 1963 1965
 LOWER SALEM MODEL K 45745 DTSz 200 1970 1996 0413

LYONS

LYONS MODEL K DT 200 1950 0913 1962 0712
 LYONS MODEL K 43533 DTSz 200 1966 0422 1981 0223

2008 Machine Cancel Symposium: OHIO UNIVERSAL CANCELS

MARION DT 300 1 1918 1223 1920 0114

International machine cancels were used in Marion from 1920's into the 1980's. The following seem to be a special uses:

MARION DT 300 1953 0415 NEW



At left, Marion, Ohio 1953 0415 Universal Type DT 300

Airmail franking for US First Flight AM-88 Segment No. 4 from Marion to Cleveland.

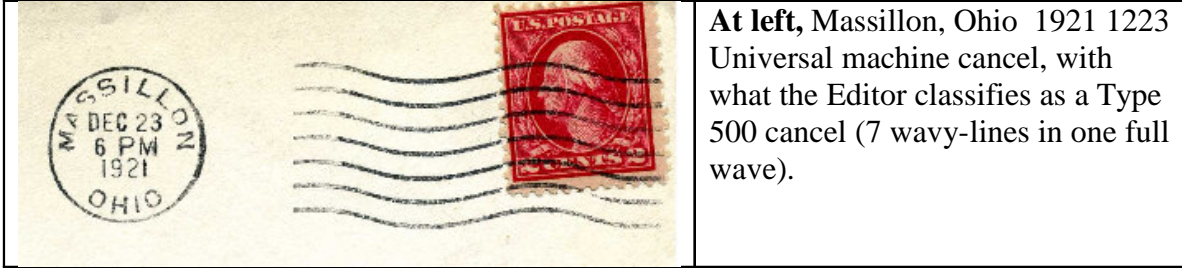
MARION 43302 DTSz 200 3 1972 1219

MARLBORO DT 500 1928 0301
 MASON DT 300 2 1963 1026
 MASON 45040 DTSz 300 2 1966 0214 1983 0603

MASSILLON

The following Massillon list was prepared by the Editor. Bob Payne lists a DT 200 used from 1927 0124 to 1931 0613. The Editor requests a photocopy. What the Editor classifies as a Type 500 used in Massillon is very close to a Type 200. It is a judgment call as to whether the 1921 and 1929-1931 uses fall into either type. In inspecting the bottom wavy-line, it goes horizontal, then down. The Editor calls it a Type 200 since there is no upward motion to create a whole wave. This is an opportunity for exchanges of cancels and discussion as to how to classify them. What do you think?

MASSILLON	With no period after OHIO. NEW	DT A	500	1921 1223	
-----------	--------------------------------	------	-----	-----------	--



At left, Massillon, Ohio 1921 1223 Universal machine cancel, with what the Editor classifies as a Type 500 cancel (7 wavy-lines in one full wave).

Classified by Bob Payne
The Editor requests copies of cancels in this time frame.

MASSILLON		DT	200	3	1927 0124	1931 0613
MASSILLON	With period after OHIO	NEW DT B	500		1929 0105	1931 0211



At left, Massillon, Ohio 1930 1216 Universal machine cancel Type DT-500, with OHIO followed by a period. This is a different postmark dial than used in 1921.

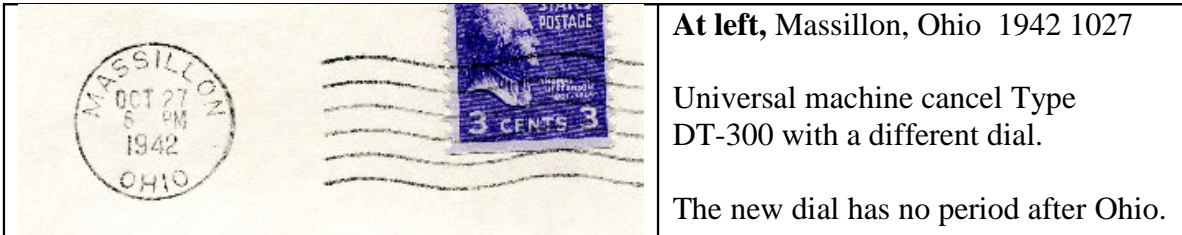
MASSILLON	With period after OHIO	DT B	300	2	1932 1229	1938 0514
-----------	------------------------	------	-----	---	-----------	-----------



At left, Massillon, Ohio 1932 1229 Universal machine cancel Type DT-300.

Note the new cancel uses the old dial with a period after OHIO.

MASSILLON	New dial / no period after OHIO	DT C	300	2	1942 1027	1961 1110
-----------	---------------------------------	------	-----	---	-----------	-----------



At left, Massillon, Ohio 1942 1027 Universal machine cancel Type DT-300 with a different dial.

The new dial has no period after Ohio.



MASSILLON SLOGANS

DT dial	FIGHT TB / SUPPORT YOUR / TB ASSOCIATION with TB emblem at left	1952
DT dial	STRIKE BACK AT CANCER / GIVE / AMERICAN CANCER ASSOCIATION	1953, 1957, 1960
DT dial	PRAY / FOR / PEACE	1964

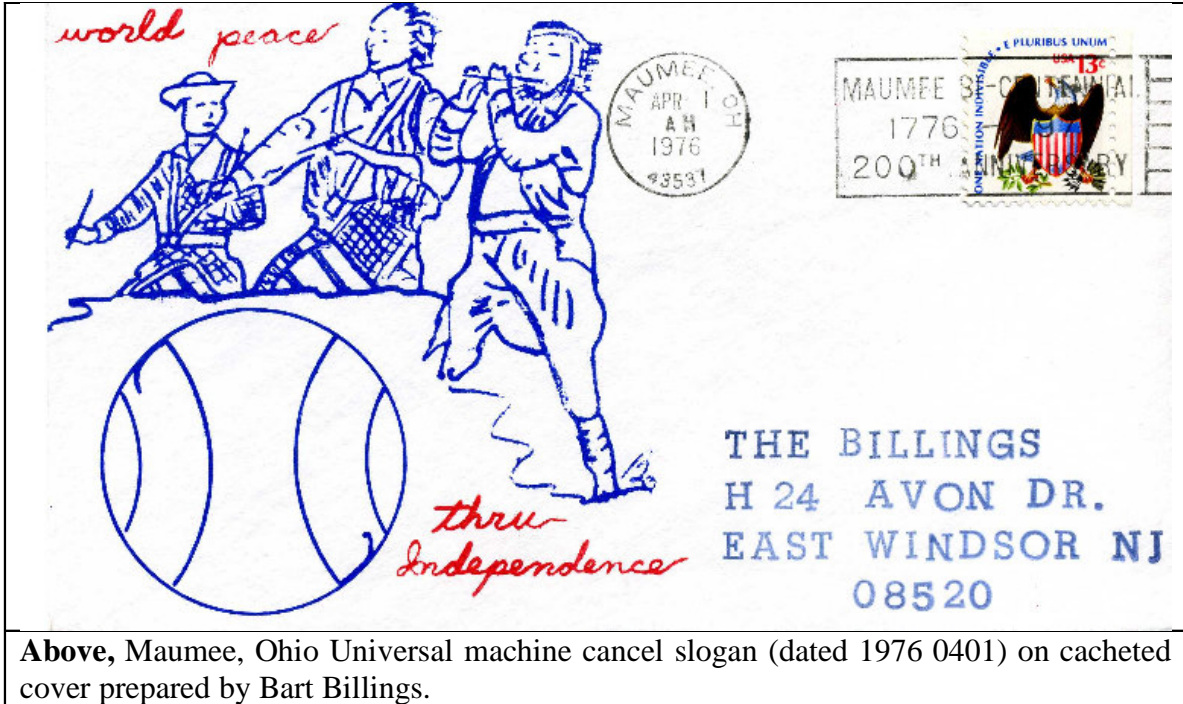
MASURY

MASURY	MODEL K	DT	200		1942 1113	1953 0917
MASSURY		DT	300	2	1958 0710	1965 0720
MASSURY		44438 DTSz	300	2	1968 0502	1983 1107

MAUMEE

MAUMEE		DT	300	2	1934 0822	1965 0112
MAUMEE		43537 DTSz	300	2	1966 0303	1970 0623

MAUMEE	MAUMEE BI-CENTENNIAL / 1776 - 1976 / 200 TH ANNIVERSARY	DTSz	SLOGAN	1976
			SLOGAN	



Above, Maumee, Ohio Universal machine cancel slogan (dated 1976 0401) on cacheted cover prepared by Bart Billings.

McARTHUR

McARTHUR	MODEL K	DT	200	1952	1963
McARTHUR	MODEL K	DT	SLOGAN	1950	
	VINTON COUNTY, OHIO / 1850 -- 1950 / CENTENNIAL				

SLOGAN

McCLURE	MODEL K	DT	200	1959 0417	1963 0306
McCLURE	MODEL K	43534 DTSz	200	1966	1973 0615
McDERMOTT	MODEL K	DT	200	1961 0421	1963
McDERMOTT	MODEL K	45652 DTSz	200	1966 0615	1983 0603
McDONALD	MODEL K	DT	200	1943	1951
McDONALD		DT	300	2 1962 0714	1965 0124
McDONALD		44437 DTSz	300	2 1967 0419	1995 0919
MECHANICSBURG		DT	300	2 1956 0817	1965 0424

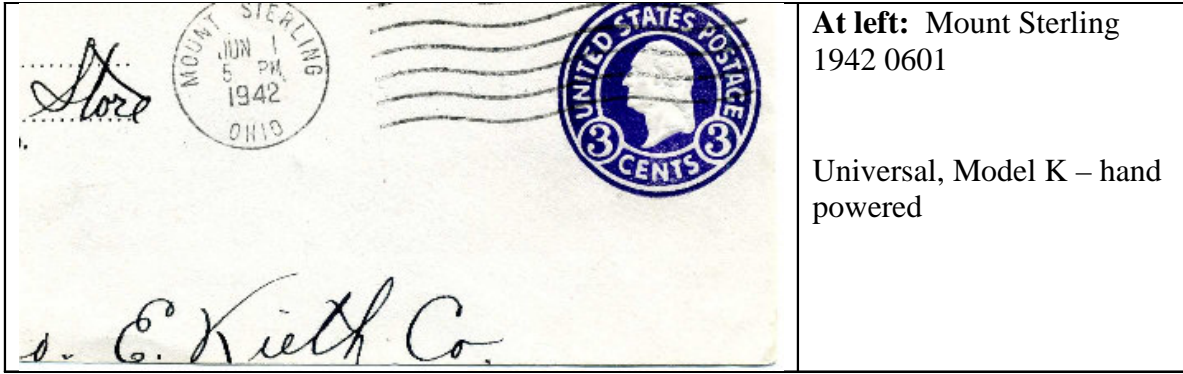
2008 Machine Cancel Symposium: OHIO UNIVERSAL CANCELS

MECHANICSBURG		43044	DTSz	300	2	1967 0106	1982 0712	
MEDIERA	Anthology III on Model K's listed Mediera. This is a spelling error. See Madiera.							
MEDWAY	MODEL K		DT	200		1963 0514	1965 0730	
MENTOR			DT	600		1929 1029	1953 0826	
MENTOR			DT	300	2	1957 0305	1965 1018	
MENTOR	PRAY / FOR / PEACE	SLOGAN	DT	SLOGAN		1964		
MENTOR		44060	DTSz	300	2	1966 0307	1967 0915	
MIAMISBURG			DT	300	2	1953 0126	1964 0706	
MIAMISBURG		45342	DTSz	300	2	1965 1209	1966 0824	
MIAMITOWN			DT	300	2	1961 1201	1963 0107	
MIAMITOWN		45041	DTSz	300	2	1966 0201	1973 0901	
MIDDLEFIELD			DT	300	2	1941 0513	1958 0208	
MIDDLEFIELD	GEAUGA COUNY / MAPLE FESTIVAL		DT	SLOGAN		1957		
	APRIL 5—6—7							
			SLOGAN					
MILFORD			DT	300	2	1964 1009	1965 1001	
MILFORD		45150	DTSz	300	2	1965 1209	1968 0301	
MILAN	MODEL K		DT	200		1951 0405	1964 0221	
MILLBURY			DT	300		1965 0804	NEW	
MILLBURY		43447	DTSz	300	2	1970 0918	1981 0828	
MILLERSBURG			DT	1	300	2	1932 0419	1937 0217
MILLERSBURG			DT	2	300	2	1942 0829	1959 0307
MILLERSPORT	MODEL K		DT	200		1946 1228	1963 0308	
MINSTER			DT	300	2	1934 0317	1958 1022	
MONCLOVA	MODEL K		DT	200		1962	1963 1129	
MONCLOVA	MODEL K	43542	DTSz	200		1966 0816	1971	
MORROW	MODEL K		DT	200		1951		
MOUNT ORAB		45154	DTSz	200	3	1968 0401	1987 1013	
MOUNT PLEASANT	MODEL K		DT	200		1960 0609	1963 0925	
MOUNT PLEASANT	MODEL K	43939	DTSz	200		1966 1018	1982 1208	

MOUNT STERLING

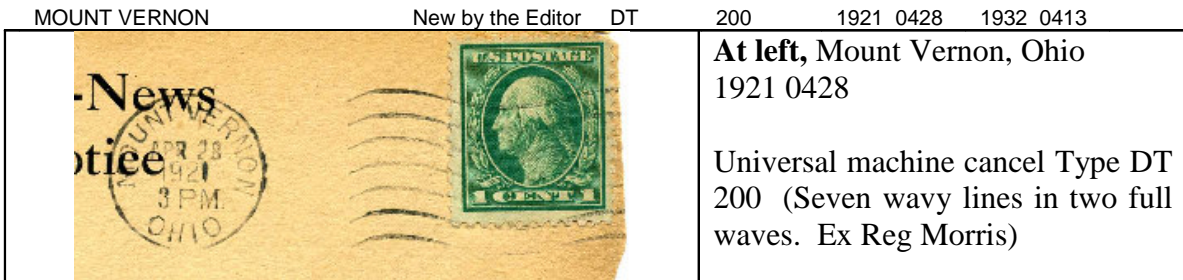
It is not often that a completely new Universal town is reported with both Earliest Known Use (EKU) and Last Known Use (LKU) found relatively close in time to one another, but here it is:

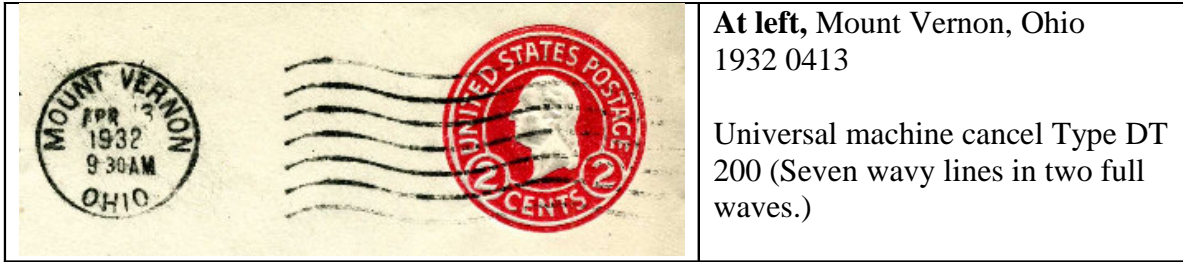
						1942 0601	1942 1207
MOUNT STERLING	MODEL K		DT	200		NEW Reported by A J Savakis	NEW Reported by Bart Billings



Note: The Mount Sterling post office opened in 1830. For a good many years, its growth was slow. It had a population of 1623 in 1980 and 1647 in 1990. It seems an unlikely place for machine cancel changes and innovations. But it is located in Madison County off I-71 and southwest of Columbus by about a half-hours drive from the Columbus outer-belt. With new freeways, it is close enough for a suburban commute. It is noteworthy that one of those machines in 1990 (with International characteristics) would utilize a postmark dial with a zip+4 number: 43143-9998. For Ohio, the Mount Sterling zip+4 postmark dial is unique. *Why the zip+4 in the dial?* By the mid-1990's it became apparent that with the United States Postal Service (USPS) mandating interchangeable cancelling hubs and postmark dies between machine manufacturer that identification of machines by looking at the final product (ie. the cancel) alone would be difficult if not impossible. Records and physical check of the post office for machine identification becomes necessary for positive identification. A Chamberlain machine cancel is known for Mount Sterling during this period of time, and reported by John Becker III. Because of the Mount Sterling zip+4 postmark dial, we were in effect warned by the change in the postmark that something different was being used there. This is not the case for other post-1990 postmarks whether they be Universals OR Internationals. For a real surprise, see the section for the Warren Universal machine cancel.

MOUNT VERNON

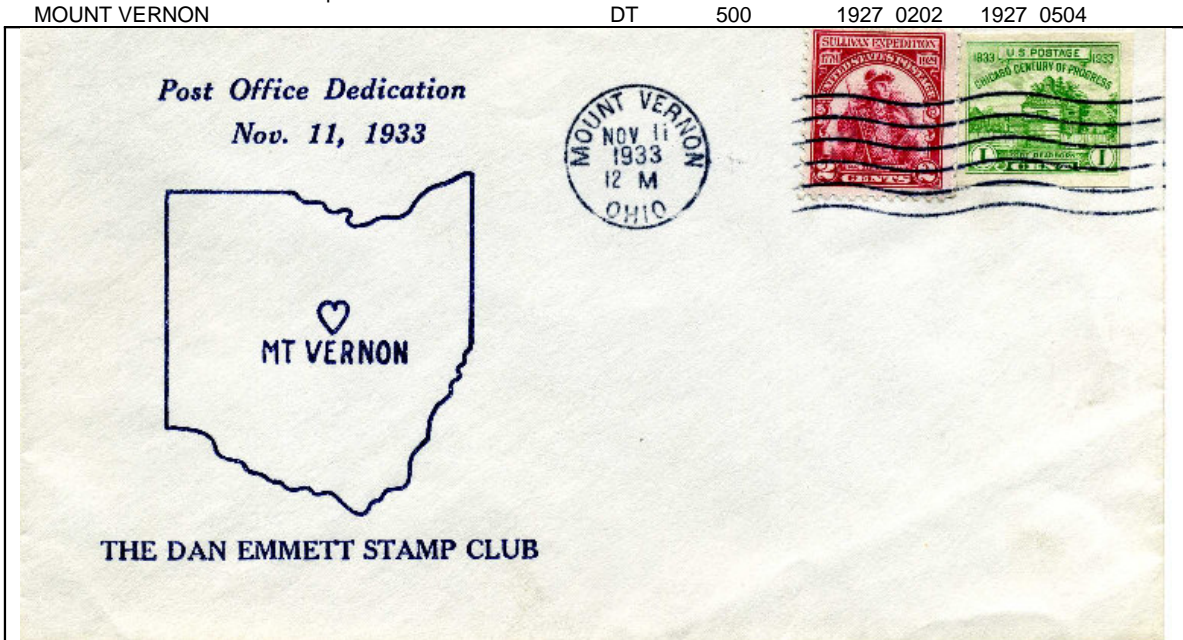




**At left, Mount Vernon, Ohio
1932 0413**

Universal machine cancel Type DT
200 (Seven wavy lines in two full
waves.)

The Editor wishes to see
examples of this cancel.



Mount Vernon, Ohio Universal machine cancel type DT-300 used on first day of new post office, the dedication falling on the 15th Anniversary of Armistice Day (1933 1111).




MOUNT VERNON	DT	300	2	1932 1111	1952 0813
MOUNT VERNON	DT	200	3	1957 0605	

MOUNT VERNON SLOGANS

MOUNT VERNON, OHIO / 1805-1955 . SESQUICENTENNIAL	UNIVERSAL	DT	1955
NATIONAL / SALVATION ARMY WEEK / FOURTH WEEK IN MAY	UNIVERSAL	DT	1962
PRAY / FOR / PEACE	INTERNATIONAL	Hz	1966
PRAY / FOR / PEACE	UNIVERSAL	DTSz	1971
PRAY / FOR / PEACE	UNIVERSAL	DTSz	1974

Notes:

Quick Cancellation Type Chart

<p>6 wavy lines / 2 full waves Type 300</p> 	<p>6 wavy lines / 1 full wave Type 600</p> 
<p>7 wavy lines / 2 full waves Type 200</p> 	<p>7 wavy lines / 1 full wave Type 500</p> 