

# N

Single digits following postmark dial types and cancellation types represent metal die differences observed by Bob Payne. Dies changes marked by a capital letter are those noted by the Editor.

NAVARRE	MODEL K	DT	200	1946 0805	1949 0718
---------	---------	----	-----	-----------	-----------

Bob Payne reports use of an electric International with Type J dial in 1961 at Navarre (Stark County). If the reader is unsure of distinguishing an International Type J dial from a Universal DT dial, see other examples pictured in this list, for example see Gibsonburg, Ohio. Stark County, Ohio, postal historians are advised to seek out Navarre cancels used in the 1950's and report their finds to the Editor.

NELSONVILLE	45764	DTSz	200	3	1978 0630
-------------	-------	------	-----	---	-----------

Bob Payne reports use of an electric International both before and after 1978 at Nelsonville (Athens County). You are asked to search all 1970's machine cancels from Nelsonville, and report your finds to the Editor.

NEW BREMEN		DT	300	2	1934 0314	1959 0505
NEW CARLISLE		DT	300	2	1957 0225	1965 0828
NEW CARLISLE	45344	DTSz	300	2	1966 0708	1972 0911
NEW CONCORD		DT	300	2	1935 0204	1957 0318
NEW KNOXVILLE	MODEL K	DT	200		1959	1963
NEW KNOXVILLE	MODEL K	45871 DTSz	200		1965 1216	1977 1117
NEW LEBANON	MODEL K	DT	200		1948 1130	1959 0709
NEW LEBANON		DT	300	2	1964 0128	1965 0919
NEW LEBANON		45345 DTSz	300	2	1966 1205	1981 1124
NEW LEXINGTON		DT	600		1927 0203	
NEW LEXINGTON		DT	300	2	1934 0420	1965 0914
NEW LEXINGTON		43764 DTSz	300	2	1966 0526	1983 0129

## NEW LONDON

NEW LONDON	OHIO followed by period	DT	A	600	1924 0104	1934 0402
NEW LONDON	OHIO with no period	DT	B	300	2 1934 090?	1958 1101

The New London postmark dial differences seem to coincide with the changes in the cancellation die from Type 600 to Type 300. Is this consistent? Please report different combinations of postmark dial and cancellation die to the Editor.

## NEW MIDDLETOWN

NEW MIDDLETOWN	MODEL K	NEW DT	200	1959 0707	1962 0817
NEW MIDDLETOWN	MODEL K	44442 DTSz	200	1967 0313	1976 0325

	<p><b>At left:</b> New Middletown, Ohio 1962 0817 Universal Model K Hand powered machine</p> <p>The 1959 use reported in the table above is by Bart Billings. This 1962 example ex Genevieve Covalt</p>
	<p><b>At left,</b> New Middletown, Ohio 44442 1970 0612 Universal Model K Hand powered machine</p>
<p>Bob Payne reports the International Electric machine cancel in use at New Middletown starting 1973 0707, and as seen by the example below, the Editor can confirm independent of his report a use 1975 0210. That means the Model K hand powered Universal was used simultaneously with the International Electric for a period of at least three years. The Editor would appreciate reports of ANY New Middletown use of EITHER the hand powered Universal Model K or the International Electric from 1972-1978 to confirm this.</p>	
	<p><b>At left,</b> New Middletown, Ohio 44442 1975 0210 <u>International Electric</u></p>

NEW PHILADELPHIA

NEW PHILADELPHIA	DT	600	1923 0213	1932 0824
NEW PHILADELPHIA	DT	1	300 2	1933 0102
NEW PHILADELPHIA	DT		SLOGAN	1953

*Remember Only you can / PREVENT / FOREST FIRES with burnt tree stump at left SLOGAN*

2008 Machine Cancel Symposium: OHIO UNIVERSAL CANCELS

NEW PHILADELPHIA DT 2 300 2 1955 1213 1959 0410  
 Bob Payne reports that New Philadelphia began using an International Electric machine 1960 0216, with an International Type J dial. If the reader is unsure of distinguishing an International Type J dial from a Universal DT dial, see other examples pictured in this list, for example see Gibsonburg, Ohio.

NEW RICHMOND

NEW RICHMOND DT 1 300 2 1950 0414 1958 1220  
 NEW RICHMOND DT 2 300 2 1961 1216 1965 0430  
 NEW RICHMOND 45157 DTSz 300 2 1967 0127 1982 1105

NEW WASHINGTON

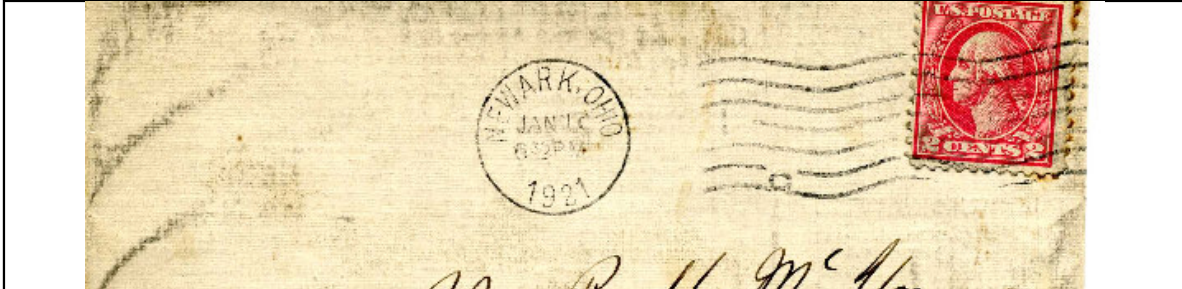
NEW WASHINGTON DT 300 2 1932 0803 1965 1109  
 NEW WASHINGTON 44854 DTSz 300 2 1966 0919 1972 1002

NEWARK

NEWARK DT 300 1 1918 1224 1920 0408



**Above,** Newark, Ohio 1920 0408 Universal (used 1918-1920).  
**Below,** Newark, Ohio 1921 0117 **International** (used first used according to Bob Payne 1919 1008) with '1' in cancellation, then reported used without '1' in cancellation beginning in 1927. What was used in between 1921 and 1927?



NEWBURY

NEWBURY MODEL K DT 200 1963 0621 1964 1009  
 NEWBURY MODEL K 44065 DTSz 200 1966 0414 1983 1206

NEWTOWN

NEWTOWN

MODEL K

DT200

200

1953

1957 0731



**Above:** Newtown, Ohio Model K hand powered Universal machine cancel. 1957 0731 Collectors searching for Earliest Known Use (EKU) and Last Known Use (LKU) seldom find finality, as new covers found and reported can easily change these dates. For certainty, post office records but for errors, are proof of finality. Whereas postal history cannot document finality, this cacheted cover seems to achieve this so on LKU for the Newtown Universal Model K.

NILES

NILES		DT	600		1922 1206	1939 0121
NILES		DT	300	2	1939 0809	1943 0129
NILES		DT	200	3	1957 0812	1965 1213

NILES	PRAY / FOR / PEACE	SLOGAN	DT	SLOGAN	1962
-------	--------------------	--------	----	--------	------

2008 Machine Cancel Symposium: OHIO UNIVERSAL CANCELS

NILES 44446 DTSz 200 3 1966 0207 1984 0525

Notes:

---

---

---

NOBLE

NOBLE DT 300 2 1956 0617 1965 0619

NORTH CANTON

NORTH CANTON DT 300 1927 0211 1930 0503  
NORTH CANTON DT 600 1931 0707 1946 0205  
NORTH CANTON DT 1 300 2 1959 0430 1960 0413  
NORTH CANTON DT 2 300 2 1965 1028

NORTH CANTON SLOGANS:

2008 Machine Cancel Symposium: OHIO UNIVERSAL CANCELS

NORTH CANTON	FIGHT TB / SUPPORT YOUR / TB ASSOCIATION	TB emblem at left				
		SLOGAN	DT	SLOGAN	1956	
NORTH CANTON	ABILITY COUNTS through cog that reads EMPLOY THE / HANDICAPPED					
		SLOGAN	DT	SLOGAN	1962, 1964	

Notes:

---



---



---



---



---



---

NORTH JACKSON

NORTH JACKSON	MODEL K		DT	200	1963	1964 0605
NORTH JACKSON	MODEL K	44451	DTSz	200	1966	1999 0726





NORTH MADISON

NORTH MADISON	MODEL K	DT	200		1958 0617	1959
NORTH MADISON		DT	300	2	1960 0607	1965 1216
NORTH MADISON		44057 DTSz	300	2	1967 0105	1975 0821



Observe the distance between the postmark dial, and the cancel die. The hand powered Universal machine (Model K) has a distance of about 6 millimeters. The electric Universal has a distance of about 11 millimeters.

NORTH OLMSTEAD

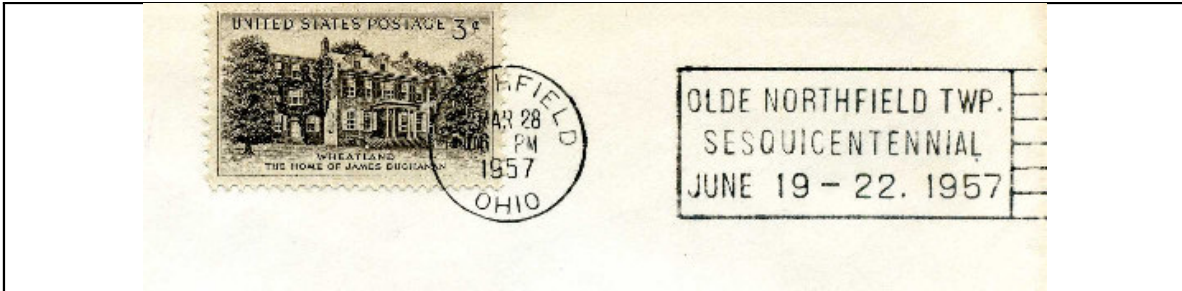
NORTH OLMSTED		DT	300	2	1954 0623	1960 0325
NORTH OLMSTED		44070 DTSz	300	2	1972 0204	

NORTH OLMSTEAD SLOGANS

NORTH OLMSTEAD	PRAY / FOR / PEACE	DT	SLOGAN	1960, 1962, 1964
NORTH OLMSTEAD	NORTH OLMSTEAD / SESQUICENTENNIAL / 1815 - 1965	DT	SLOGAN	1965
NORTH OLMSTEAD	PRAY / FOR / PEACE	44070 DTSz	SLOGAN	1967, 1969, 1972

NORTHFIELD

NORTHFIELD		DT	300	2	1956	1102	1966	1216
NORTHFIELD	OLDE NORTHFIELD TWP. / SESQUICENTENNIAL / JUNE 19 - 22. 1957	DT	SLOGAN		1957			
		SLOGAN						
NORTHFIELD		44067 DTSz	300	2	1972	0225	1986	0806



**Above,** Northfield, Ohio 1957 0328 Universal machine cancel (electric) with sesquicentennial slogan reading,

OLDE NORTHFIELD TWP. / SESQUICENTENNIAL / JUNE 19 - 22. 1957

NORWALK

NORWALK		DT	300	1	1917	1125	1924	1219
---------	--	----	-----	---	------	------	------	------



**At left,**  
Norwalk, Ohio 1920 0508  
Universal machine cancel with  
Type DT 300 cancel.



2008 Machine Cancel Symposium: OHIO UNIVERSAL CANCELS

	'Thin' R		DT	A	600	1927 0322	1932 1216
NORWALK	'Wide' R	NEW DIAL	DT	B	600	1934 0316	1934 1216

	<p><b>At left,</b> Norwalk, Ohio 1927 1224 (Christmas Eve) Universal machine cancel with Type DT 600 cancel.</p> <p>Look at the 'R' in NORWALK.</p>
	<p><b>At left,</b> Norwalk, Ohio 1934 0517 NEW DIAL! Look at the 'R' in NORWALK. It is much wider than the dial used 1927-1932. What was used from 1932-1934? Where the dials ever used interchangeably? Please report finds to the Editor.</p>

NORWALK			DT	1	300	2	1938 0415	1946 1024
---------	--	--	----	---	-----	---	-----------	-----------

	<p><b>At left,</b> Norwalk, Ohio 1938 0515 (used during National Airmail Week to cancel covers) Universal machine cancel with Type 300 cancel (second use of this type at Norwalk with new hub)</p>
--	---

The Editor is of the opinion that the DT dial used from 1938-1940 is the same dial introduced in 1934.

NORWALK			DT	2	300	2	1958 0225	1959 0124
---------	--	--	----	---	-----	---	-----------	-----------

The new Norwalk postmark dial arrived in time to be used to celebrate the Norwalk sesquicentennial of the Ohio Firelands, noted by the following slogan cancellation:

NORWALK	FIRELANDS / SESQUICENTENNIAL / JULY 25 - AUGUST 1		DT	2	SLOGAN	1959
---------	---	--	----	---	--------	------

	<p><b>At left,</b> Norwalk, Ohio 1958 0312 Universal Type DT 300 with new dial. Note the 'R' in NORWALK. It is again thin, but this is not a reuse of the dial from the 1920's (compare the 'O' in Norwalk).</p>
--	--



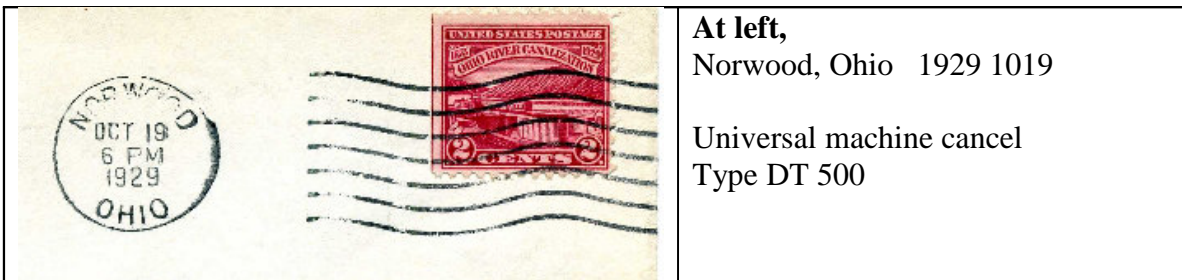
**Above,** Norwalk celebrates the settling of its area with the land grant to victims of the Revolutionary War, whose property was burned, and aptly called ‘The Firelands.’ Universal machine cancel used with the new dial, dated 1959 0725.

NORWALK		DT	3	300	2	1965 0518	1965 0910
NORWALK	44857	DTSz		300	2	1966 0719	1987 1210

### NORWOOD

NORWOOD		DT		500		1920 0706	1933 0113
NORWOOD		DT		500			1944 1121
NORWOOD		DT	200	2		1946 0403	

The Editor lacks sufficient examples of Norwood to conclude that the 1944 use reported above is continuous use of the 1920-1933 use. Please report examples used from 1933 to 1944 to confirm this use.



**At left,**  
Norwood, Ohio 1929 1019  
  
Universal machine cancel  
Type DT 500

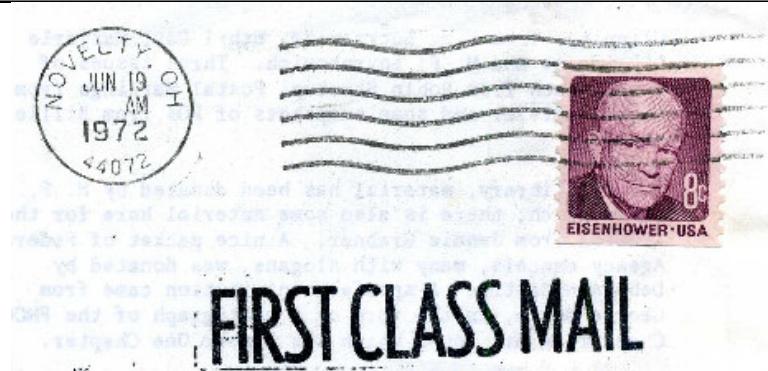
The Ohio River Canalization commemorative stamp was issued on October 19, 1929, at Cincinnati, Ohio, and various other cities along the Ohio River from Indiana to Pennsylvania, plus Washington, DC. No other Ohio city was an official cite. So is this an unofficial first day of use? The United States Post Offices –Volume V – The Ohio Valley by Richard W. Helbeck lists the Norwood post office as closing in 1892. The Directory of Post Offices by the Postmark Collector’s Club lists Norwood as a branch of

Cincinnati. Despite the incorporation of Norwood's postal operations into Cincinnati, Norwood is an independent city of 23000 with its own mayor and city council. The city's official web site states, "Rich in pride, tradition and heritage, the City of Norwood, Ohio has long thrived as an independent community nestled in the heart of the Greater Cincinnati metropolitan area." So is it an unofficial *city*? *Yes, but it is better described as an official branch first day cover!*

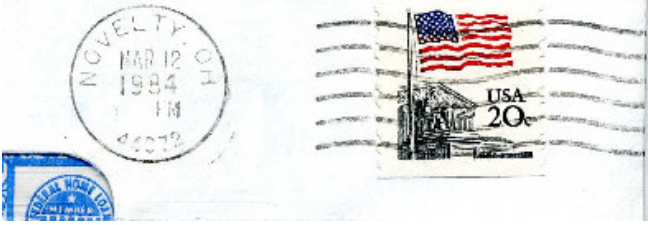
NOVELTY


NOVELTY

44072 DTSz 300 2 1972 0619 1984 0312

 <p>Cut from a flier and saved as a 2 x 4.</p>	<p><b>At left,</b></p> <p>Novelty, Ohio 44072 Universal machine cancel (electric) Type DTSz300 Ex Bart Billings</p> <p>Bob Payne from his data list opines that an earlier Universal machine and/or cancellation was used.</p>
---	--

As you compare the postmark dials, above and below, they are the same dial. What makes them look so different is the size of the years 1972 and 1984 engraved onto the slugs that fit into the back of the dial and print the year.

 <p>Scanned from an oversized business envelope.</p>	<p><b>At left,</b></p> <p>Novelty, Ohio 44072 Universal machine cancel (electric) Type DTSz 300 Ex Reg Morris</p> <p>This is listed as the Last Known Use, for now. Additional searches and reports will undoubtedly change this date. Report later uses to the Editor.</p>
---	---

	<p>If you are looking for new dates of use, new towns, or just filing in blanks in your machine cancel list, do not ignore oversized mail pieces and 2x4's. If you use plastic drawers, you can easily find them large enough to handle the oversized mail pieces, and by inserting the 2x4's into plastic post card protective sleeves with an index card, they can all fit into the same drawer, arranged by town name alphabetically.</p>
--	--