

Q

There are no Ohio cities or communities with names beginning with a Q, using a Universal machine cancel device.

R

Single digits following postmark dial types and cancellation types represent metal die differences observed by Bob Payne.

RAVENNA

A Cummins machine cancel was in use in Ravenna to 1920.

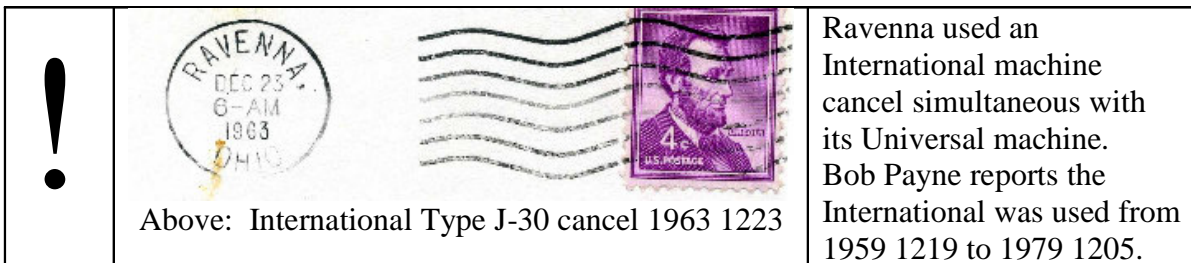
| | | | | | | |
|---------|----|-------|------|------|------|-----------|
| RAVENNA | DT | 500 | 1923 | 1221 | 1932 | 0516 |
| RAVENNA | DT | 1 300 | 2 | 1934 | 1002 | 1937 0306 |
| RAVENNA | DT | 2 300 | 2 | 1941 | 1126 | 1965 0825 |



At left, Ravenna, Ohio 1960 0406
Universal Machine Cancel \ Type DT 300.

| | | | | |
|---------|--|----|--------|------|
| RAVENNA | GIVE – ENOUGH / THROUGH YOUR / COMMUNITY CHEST With feather at left | DT | SLOGAN | 1949 |
| | | | SLOGAN | |

| | | | | | | | | |
|---------|-------|------|-----|---|------|------|------|------|
| RAVENNA | 44266 | DTSz | 300 | 2 | 1966 | 0107 | 1974 | 0726 |
|---------|-------|------|-----|---|------|------|------|------|



Above: International Type J-30 cancel 1963 1223

Ravenna used an International machine cancel simultaneous with its Universal machine. Bob Payne reports the International was used from 1959 1219 to 1979 1205.

ROCK CREEK

2008 Machine Cancel Symposium: OHIO UNIVERSAL CANCELS

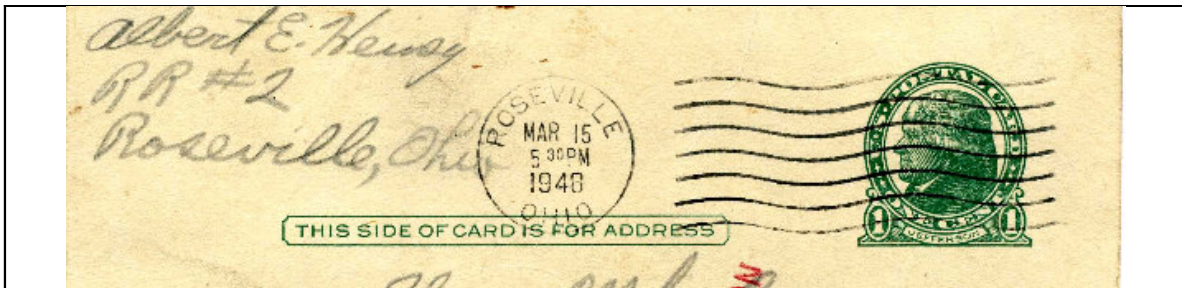
| | | | | | | |
|------------|---------|-------|------|-----|-----------|-----------------------------|
| ROCK CREEK | MODEL K | | DT | 200 | 1965 0909 | NEW REPORT BY BART BILLINGS |
| ROCK CREEK | MODEL K | 44084 | DTSz | 200 | 1966 | 1987 0903 |

ROCKFORD

| | | | | | | |
|----------|---------|-------|------|-----|-----------|-----------|
| ROCKFORD | MODEL K | | DT | 200 | 1958 1003 | 1965 0702 |
| ROCKFORD | MODEL K | 45882 | DTSz | 200 | 1966 0611 | 1982 1120 |

ROSEVILLE

| | | | | | | |
|-----------|---------|--|----|-----|-----------|------|
| ROSEVILLE | MODEL K | | DT | 200 | 1945 0223 | 1953 |
|-----------|---------|--|----|-----|-----------|------|



Above, Roseville, Ohio 1948 0315 Universal Model K. By 1959, an electric International machine cancels would be in use.

ROSSFORD

| | | | | | | |
|----------|--|-------|------|-----|-----------|-----------|
| ROSSFORD | | | DT | 600 | 1945 0228 | 1965 0730 |
| ROSSFORD | | 43460 | DTSz | 600 | 1968 0711 | 1970 1221 |





ROSSMOYNE

| | | | | | | |
|-----------|---------|--|----|-----|-----------|-----------|
| ROSSMOYNE | MODEL K | | DT | 200 | 1945 0416 | 1949 1116 |
|-----------|---------|--|----|-----|-----------|-----------|



Notes:

Quick Cancellation Type Chart

| | |
|---|---|
| <p>6 wavy lines / 2 full waves Type 300</p>  | <p>6 wavy lines / 1 full wave Type 600</p>  |
| <p>7 wavy lines / 2 full waves Type 200</p>  | <p>7 wavy lines / 1 full wave Type 500</p>  |